

# QX-S5824

## 10 Gigabit Ethernet Switches



### At a Glance

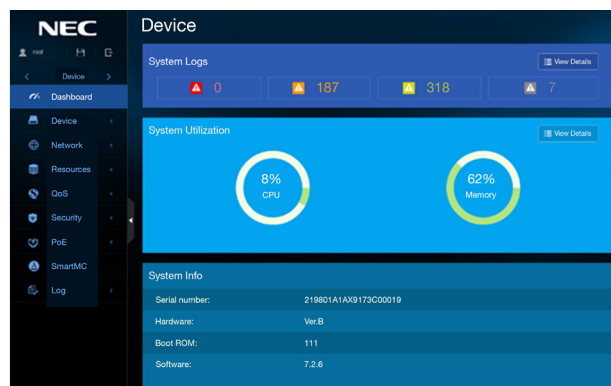
- Low cost 10 Gigabit Ethernet switches with 8 or 14 copper ports and 2 SFP+ uplinks
- In conjunction with QX-S5200 series, (1 GB PoE access switches with 10 GB Ethernet up-links) the QX-S4100 and QX-S1000 series (1 GB PoE access switch with 1 GB Ethernet up-links) can be used to implement a complete Enterprise network
- Low cost makes these switches ideal where high 10 GB throughput is required, as an example in an HCI node aggregation
- Full featured L2 and L3 forwarding
- 24 x 10 Gigabit ports SFP+ and 2 x 40 Gigabit ports QSFP+
- Two slots for one or two (redundant) power supplies and two slots for fan trays
- Two slots for expansion cards:
  - ♦ LSWM2QP2P : 2 x 40 Gbps QSFP + fiber ports
  - ♦ LSWM4SP8P : 8 x 1/10 Gbps SFP + fiber ports

### Overview

NEC's QX-5824 10 Gigabit aggregation switches offer businesses the flexibility to easily connect multiple edge switches with 10 Gigabit up-links. The two 40 Gigabit up-links offer high bandwidth in single or redundant configurations.

### Main Product Features

- 24 x 10 Gigabit ports (SFP+) with 2 x 40 Gbps up-links (QSFP+)
- Support for L2.L3 forwarding, QoS, Security, Multicast & VLAN
- CLI and WebGUI management console



QX-S5824 Series WebGUI

# Specifications

Features			QX-S5824XP-2Q2C
Performance	Switching Capacity [bps]		720.0 GB
	Transfer Rate [pps]		535.7 MB
	Switching Method		Store & Forward
	MAC Address Table		288 K
	Routing Table (IPv4/IPv6)		16 K / 8 K
Interface	ARP Table		16 K
	100 MB	10/100 BASE-TX	-
	1 Gbe	10/100/1000 BASE-T SFP + Slot	-
	10 Gbe	1/10 GBASE-T	0
		SFP + Slot	24
	40 Gbe	QSFP + Slot	2
	Number of extension card slots		2
	Management Port		√
	Console Port		√
	IRF Stack	IRF Stack Version	
MAD/ISSU		√ / √	
VLAN	IEEE 802.1q		√
	Port VLAN		√
	Protocol VLAN		√
	IP Subnet-based VLAN		√
	Isolate-user VLAN		-
	Voice VLAN		√
	Maximum number of VLAN [number of settable IP addresses]		4094[2048]
	VLAN Mapping		√
	QinQ		√
Port Function	Auto Negotiation/ Fixed speed and Duplex (full/half)		√ / √
	Auto MDI • MDIX/ Fixed MDIX		√ / √
	Flow Control (IEEE 802.3x)		√
	EAP Transmission/BPDU Transmission		√ / √
	Port Isolate		√
	Packet Transfer Suppression		B/M/U
	Storm-Constrain		B/M/U
	Jumbo Frame (byte)		10000
	Loop Detection (multi port loop supported)		√
	One-way Link Detection (DLDP)		√
	Ethernet OAM (IEEE 802.1ag)		√
	Link Aggregation (LACP Support)		√
Spanning Tree			S/R/M/P
Ring Protocol (RRPP)			√
Packet Filter (ACL)			√
IPv6 Management			√
	SPQ/WRR/WFQ/WRED		√ / √ / √ / √
QoS	Bandwidth Control		LR/CAR/GTS
	Trust/Marking		√ / √
	Number of QoS classes		8

Legend

√ = Supported

- = Not Available

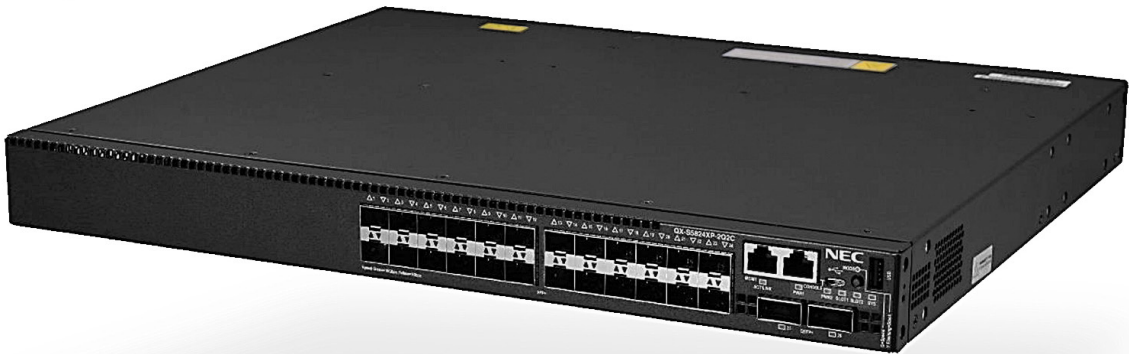
## Specifications (cont.)

Features		QX-S5824XP-2Q2C
Security	802.1x Authentication	√
	MAC Address Authentication	√
	Web Authentication	√
	Multi-step Authentication	-
	Triple Authentication	√
	Port Security	√
	Dynamic VLAN	√
	Local Authentication	√
Routing Related	Static	√
	RIP	v1/v2/ng
	OSPF	v2/v3
	BGP	4/4+
	Policy-Based-Routing	√
	VRRP	√
	BFD	√
	VRF-Lite (MCE)	√
Multicast	Multicast VLAN	√
	IGMPv1/v2/v3 Snooping	√
	MLDv1/v2 Snooping	√
	IGMPv1/v2/v3	√
	MLDv1/v2	√
	PIM-SM/PIM-SSM	√ / √
Tunnel		G/44/46/64/66
VXLAN/EVPN		-
NetMeister		-
Management Function	TELNET/SSH/WEB Console	√ / √ / -
	FTP • TFTP Client/FTP Server	√ / √
	LLDP	√
	DHCP	C/R/SV/SN
	NTP Client/NTP Server	√ / √
	Syslog	√
	Log File	√
	SNMPv1/v2c/v3	√
	Standard MIB, Private MIB	√
	RMON	√
	sFlow	√
	Port Mirroring	√
Eco-Function	EEE(IEEE 802.3az)	-
	Scheduled Task	√
Physical Specification	External Dimension (W x D x H) [mm]	43.6 x 440 x 360
	Weight	≤ 7.0 kg
	AC Power Input [50/60Hz] (Rating/Maximum)	100~240 V (90~264 V)
	Maximum Power Consumption	183 W
	Power Module Slot	2
	Fan Tray Slot	2
	Operating temperature/ Humidity (non-condensing required)	~5 °C ~ 45 °C /10~90%
USB Memory		-
VCCI ClassA/ RoHS Support		√

# Specifications (cont.)

Accessories	Specifications
Power Module: PSR450-12A1-N	Input Voltage: 100 VAC ~ 240 VAC: 50/60 Hz
	Maximum Output Power: 450 W
	Operating Temperature: -10 °C ~ 55 °C
	Relative Humidity: 5% ~ 95%
Fan Module: LSWM5FANSCBE	Fan Speed: 2100 rpm
	Maximum Air Volume: 26 CFM
	Air Flow: Front to Back
	Maximum Power Consumption: 27.72 W
	Input Voltage: 12V
Expansion Card: LSWM2QP2P	2 x 40 Gbps QSFP+ Fiber Ports
Expansion Card: LSWM4SP8P	8 x 1/10 Gbps SFP+ Fiber Ports

## QX-S5824XP-2Q2



Corporate Headquarters (Japan) NEC Corporation <a href="http://nec.com">nec.com</a>	North America (USA & Canada) NEC Corporation of America <a href="http://necam.com">necam.com</a>	NEC Enterprise Solutions NEC Europe Ltd <a href="http://nec-enterprise.com">nec-enterprise.com</a>	APAC NEC Asia Pacific Pte Ltd <a href="http://sg.nec.com">sg.nec.com</a>	Latin America NEC Latin America <a href="http://latam.necam.com">latam.necam.com</a>
---	--	--	--	--

**About NEC Corporation of America:** Headquartered in Irving, Texas, NEC Corporation of America is a leading technology integrator providing solutions that improve the way people work and communicate. NEC delivers integrated Solutions for Society that are aligned with our customers' priorities to create new value for people, businesses and society, with a special focus on safety, security and efficiency. We deliver one of the industry's strongest and most innovative portfolios of communications, analytics, security, biometrics and technology solutions that unleash customers' productivity potential. Through these solutions, NEC combines its best-in-class solutions and technology, and leverages a robust partner ecosystem to solve today's most complex business problems. NEC Corporation of America is a wholly-owned subsidiary of NEC Corporation, a global technology leader with a presence in 160 countries and \$25 billion in revenue. For more information, visit [necam.com](http://necam.com).