

MA4000 Installation Manager Clipboard

User Guide

NEC NEC Infrontia Corporation

March 2009
NDA-30982, Issue 1

Liability Disclaimer

NEC Infrontia Corporation reserves the right to change the specifications, functions, or features, at any time, without notice.

NEC Infrontia Corporation has prepared this document for the exclusive use of its employees and customers. The information contained herein is the property of NEC Infrontia Corporation and shall not be reproduced without prior written approval from
NEC Infrontia Corporation

NEAX[®] and Dterm[®] are registered trademarks of NEC Corporation.

© 2009 NEC Infrontia Corporation

MS-DOS, Microsoft, and Windows are registered trademarks of Microsoft Corporation.

All other brand or product names are or may be trademarks or registered trademarks of, and are used to identify products or services of, their respective owners.

Contents

Introduction	1-1
Installation Manager Clipboard Overview	1-1
How This Guide is Organized	1-2
MA4000 Installation Manager Clipboard Abbreviations	1-2
<hr/>	
Using MA4000 Installation Manager Clipboard	2-1
Starting Clipboard	2-1
Downloading PBX Server Data	2-3
Downloading Batch Data	2-6
Uploading PBX Server Data	2-9
Options	2-11
View Clipboard Log File	2-12



Figures

Figure	Title	Page
2-1	MA4000 Installation Manager Clipboard	2-1
2-2	Server Selection	2-3
2-3	Edit PBX Configuration	2-3
2-4	MAT Command Selection	2-4
2-5	Command Parameters.	2-4
2-6	Main Menu - Command	2-5
2-7	Main Application Window Tabs	2-5
2-8	Download Data	2-6
2-9	Download Data - Command Selection.	2-7
2-10	Enter Template File Name.	2-7
2-11	Command Assignments.	2-8
2-12	Upload Data.	2-9
2-13	Upload Results	2-10
2-14	Options	2-11
2-15	Clipboard Log File Example.	2-12



Tables

Table	Title	Page
2-1	MA4000 Installation Manager Clipboard Main Menu	2-2



1

Introduction

The *MA4000 Installation Manager Clipboard User Guide* provides a brief description of the MA4000 Installation Manager Clipboard program and the procedures for importing and exporting data using the application.

The following topics are included in this chapter:

Chapter Topics

- [Installation Manager Clipboard Overview](#)
- [How This Guide is Organized](#)
- [MA4000 Installation Manager Clipboard Abbreviations](#)



NOTE

Applicable to the NEAX IPX, NEAX IPX DM, UNIVERGE SV7000, and UNIVERGE SV7000 MPS servers.

Installation Manager Clipboard Overview

MA4000 Installation Manager provides the experienced users with integrated access to the MAT Clipboard application. You can use this tool to access MAT commands and transfer information directly to the IP-PBX or work offline and upload all changes at once.

The Clipboard can save command data from the IP-PBX as XML (Extensible Markup Language) files. You can then edit the XML files using Microsoft® Excel and upload the modified data back to the IP-PBX. Many MAT commands are time-consuming when programmed individually. Using the Clipboard to download and upload the command data in a single operation can make many tasks more efficient. For example:

- Create an off-line XML file containing large number of new users, configured using the **ASDT** and **AKYD** commands, then upload the file to the IP-PBX.
- Transfer data from an old IP-PBX to a new IP-PBX by downloading user data, editing it off-line, then uploading it to the new IP-PBX.

The application speeds system installations and eliminates errors by importing data from one switch to a destination switch. Clipboard has been enhanced to be able to perform batch data downloading and uploading. You have the ability to:

- Download or upload data from the switch based on categories (for example, Station Data, Trunk Data, Restricted Data, etc.)

- Add the commands for which the data needs to be downloaded/uploaded to a list that would be run as a batch process.
- Save selected commands in user template files for future access.

This enhancement lessens the work needed when downloading or uploading data for the same set of commands.

How This Guide is Organized

*Chapter 1
Introduction* This chapter outlines how to use the manual including the organization and chapter layout of the *MA4000 Installation Manager Clipboard User Guide*.

*Chapter 2
Using MA4000 Installation
Manager Clipboard* This chapter describes the MA4000 Installation Manager Clipboard application and its data downloading and uploading steps.

MA4000 Installation Manager Clipboard Abbreviations

<i>CDL</i>	Command Definition Language
<i>XML</i>	Extensible Markup Language
<i>MAT</i>	Maintenance Administration Terminal

2

Using MA4000 Installation Manager Clipboard

This chapter describes the MA4000 Installation Manager Clipboard and the application's command dataset downloading and uploading procedures.

The following topics are included in this chapter:

- Chapter Topics*
- [Starting Clipboard](#)
 - [Downloading PBX Server Data](#)
 - [Uploading PBX Server Data](#)
 - [View Clipboard Log File](#)



The MA4000 Installation Manager Clipboard is designed to be used by experienced technicians or engineers, and requires Microsoft® Office Excel 2000 or higher in order to modify the data.

Starting Clipboard

To launch MA4000 Installation Manager Clipboard, do the following:

Step From Microsoft Desktop, select **Start** → **Programs** → **Installation Manager R26** → **MAT Clipboard R26**.

OR

From the MA4000 Installation Manager Menu Bar, select **Tools** → **Clipboard**.

Figure 2-1 displays.

Figure 2-1 MA4000 Installation Manager Clipboard

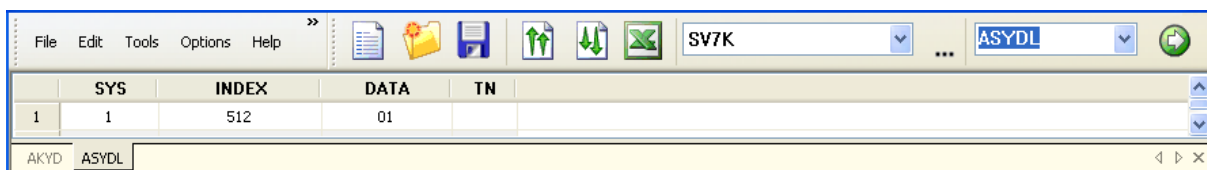














Table 2-1 MA4000 Installation Manager Clipboard Main Menu

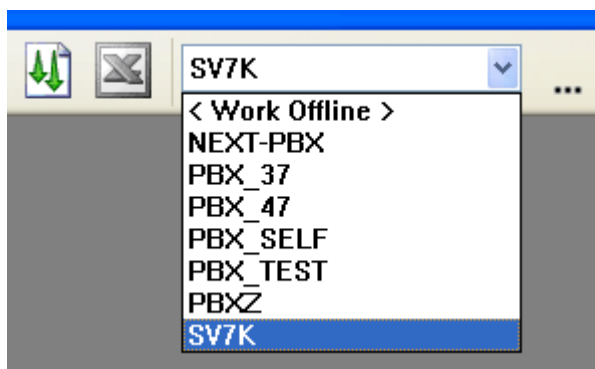
Item	Description
File	Creates, opens, or saves MAT command XML data files.
Edit	Modifies current or existing MAT command XML files.
Tools	Opens PCPro , Installation Manager , or Network Manager .
Options	Opens the <i>Options</i> dialog where Delay and Error options are specified.
Help	Displays the current Clipboard version and provides the ability to view Clipboard Log File.
	Creates a new file.
	Opens a file.
	Saves a file.
	Uploads data to a selected switch.
	Batch downloads data from the selected switch.
	Opens Microsoft® Office Excel.
	Selects the desired switch.
	Edits switch configuration.
	Selects the desired MAT command.
	Downloads data from the switch.
	Removes a selected command tab from the Clipboard main application window.
	Scrolls to command tabs located off the current main application window display.

Downloading PBX Server Data

Use the following procedure to import command datasets from an existing switch server:

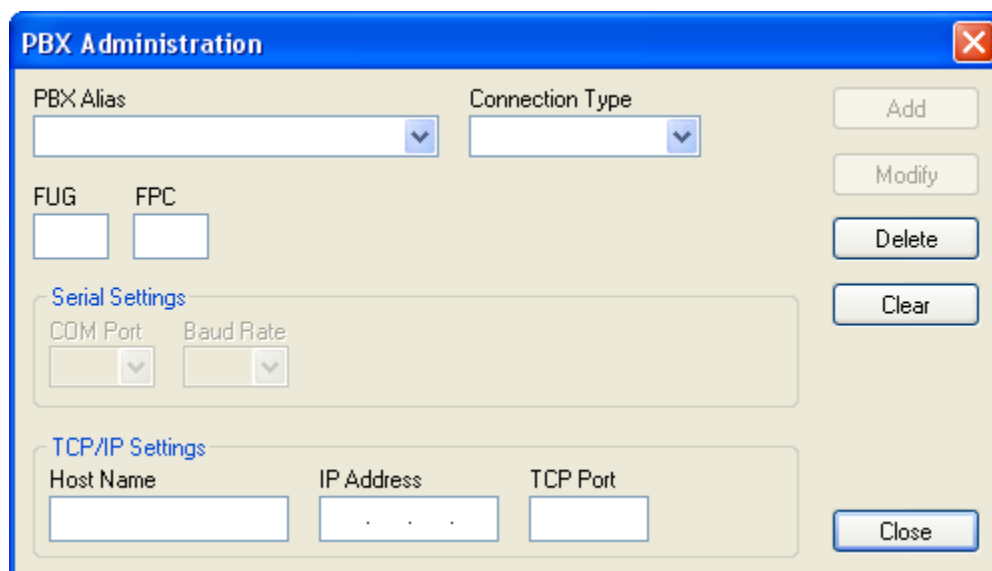
- Step 1** Select the desired server using the switch selection drop-down (see [Figure 2-2](#)).

Figure 2-2 Server Selection



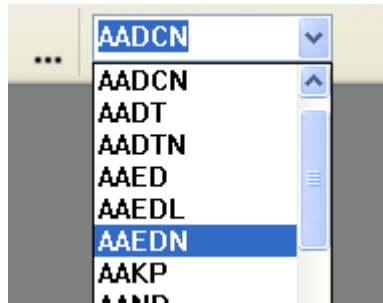
—Use the **...** icon to edit a selected PBX's configuration, or to create a new PBX configuration. [Figure 2-3](#) displays.

Figure 2-3 Edit PBX Configuration



- Step 2** Select the command dataset to import by using the MAT command drop-down (see the [Figure 2-4](#) example), or enter the command manually.

Figure 2-4 MAT Command Selection




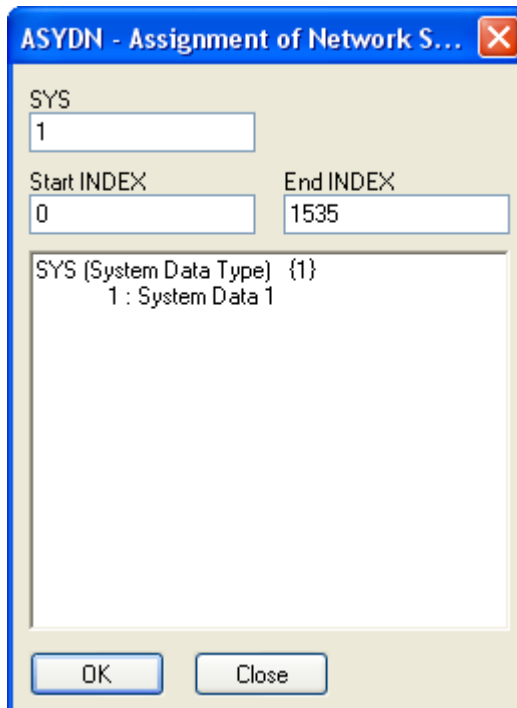
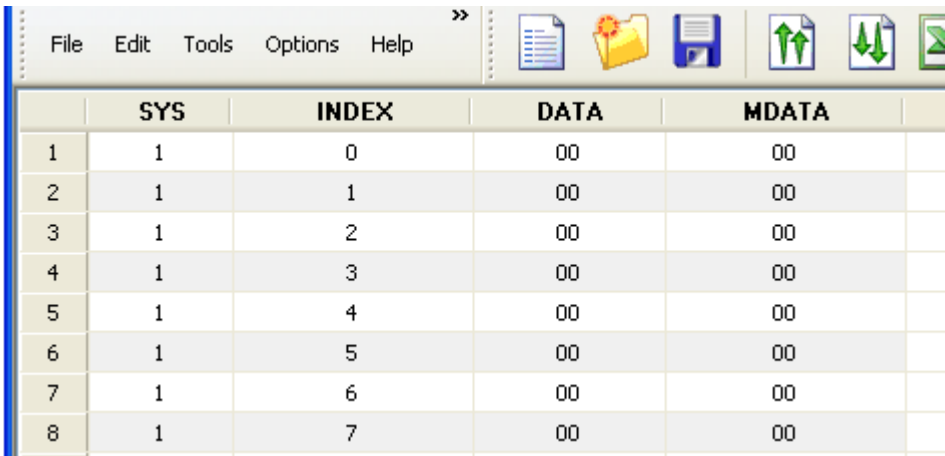
- Step 3** Click the **Downloads data from the PBX**  icon. [Figure 2-5](#) displays listing the required input parameters for the command (in this example, the **ASYDN** command).

Figure 2-5 Command Parameters



- Step 4** Modify parameters, if needed, then select **OK**. The data for the command now displays ([Figure 2-6](#)) in the main application window. .

Figure 2-6 Main Menu - Command

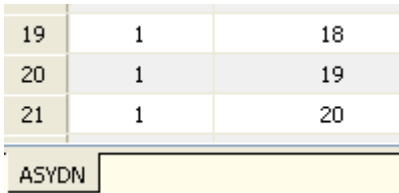


The screenshot shows a software interface with a menu bar containing 'File', 'Edit', 'Tools', 'Options', and 'Help'. To the right of the menu bar are several icons: a document, a folder, a floppy disk, two arrows pointing up and down, and a green arrow pointing right. Below the menu bar is a table with the following data:

	SYS	INDEX	DATA	MDATA
1	1	0	00	00
2	1	1	00	00
3	1	2	00	00
4	1	3	00	00
5	1	4	00	00
6	1	5	00	00
7	1	6	00	00
8	1	7	00	00

—Each command added will be tabbed at the bottom of the main application window (Figure 2-7), similar to a Microsoft® Excel spreadsheet.

Figure 2-7 Main Application Window Tabs



The screenshot shows a small table with three rows and three columns, and a tab labeled 'ASYDN' below it. The table data is as follows:

19	1	18
20	1	19
21	1	20

Below the table is a tab labeled 'ASYDN'.

Step 5 Repeat Step 1 through Step 4 until all desired command datasets are selected and configured.

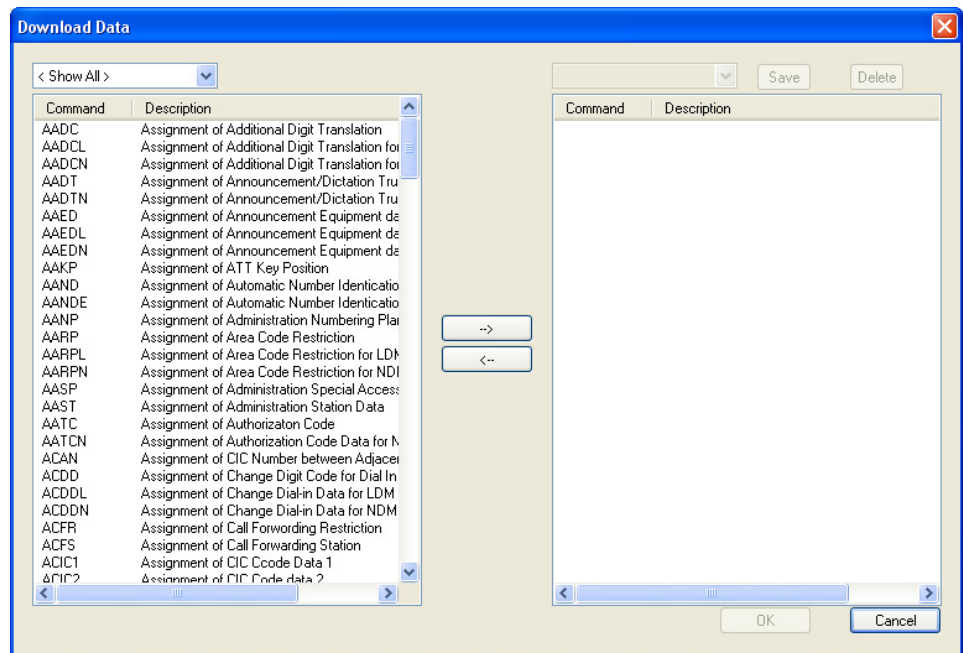
Downloading Batch Data

MA4000 Installation Manager Clipboard has been enhanced to allow batch command dataset downloading and uploading. This eliminates the steps you need to perform when downloading data for the same set of commands.

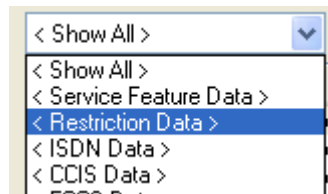
Step 1 From MA4000 Installation Manager Clipboard, select the desired server using the switch selection drop-down (see [Figure 2-2](#) on page 2-3).

Step 2 Click the **Batch Download data from PBX**  icon. [Figure 2-8](#) displays.

Figure 2-8 Download Data

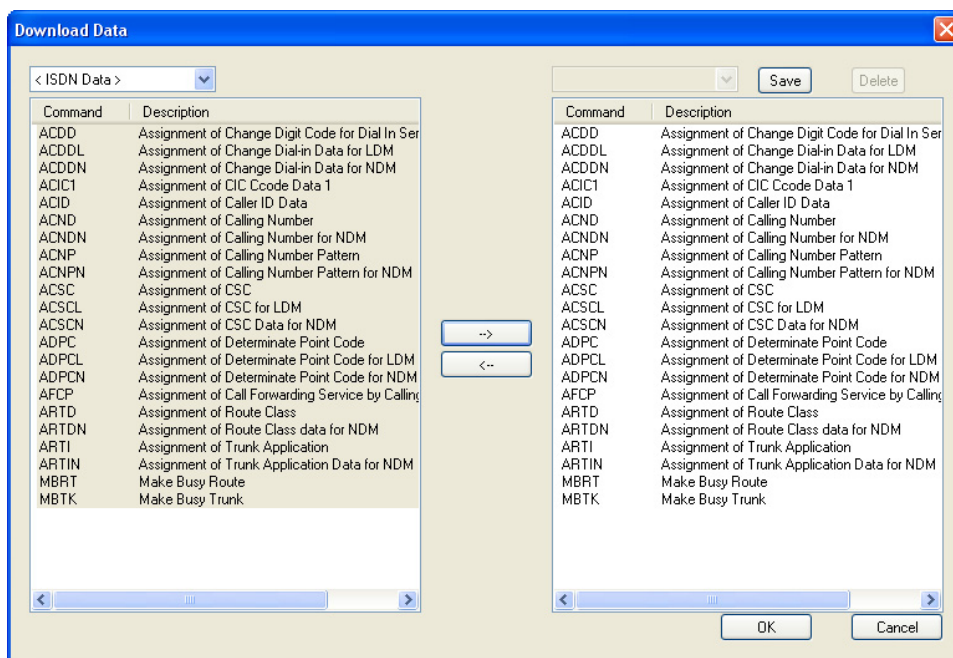


- By default, all the command datasets for the selected switch are displayed with a brief description for each command listed.
- Located above the command list is a drop-down field providing you the capability to filter commands for a specific command dataset, or to list all the commands.



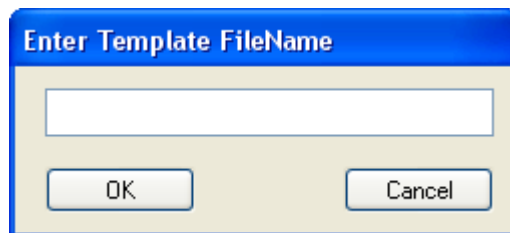
Step 3 Add or remove commands using the **RIGHT ARROW** or **LEFT ARROW** icons (see [Figure 2-9](#)).

Figure 2-9 Download Data - Command Selection



Step 4 After all commands have been selected, click **Save**. Figure 2-10 displays.

Figure 2-10 Enter Template File Name



Step 5 Enter a file name, then click **OK**. The file is saved as a template (in .xml format) you can use later when creating new datasets.

—The command datasets are listed as templates in the **Save** drop-down field.

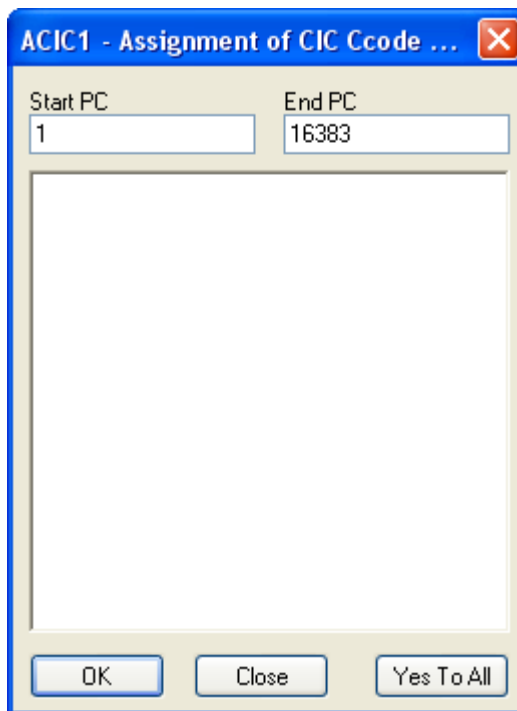
—Use **Delete** to remove existing templates or select a template name from the **Save** drop-down field. The template commands will display in the ready to download command list..



A user template decreases the amount of work when downloading command data for the same set of commands. It is not always necessary to download data for a particular group. The commands can be from different groups.

Step 6 After you finish creating a batch command dataset download, click **OK**. A dialog similar to Figure 2-11 displays for each command.

Figure 2-11 Command Assignments



- Step 7** If necessary, modify a command as each displays, then click **OK**.
- Click **Yes To All** to accept all the commands created using the batch command dataset download procedure.

Uploading PBX Server Data

Use the following procedure to upload command datasets from the main application window to the switch server:



NOTE

The upload function can also be used as a batch commands mode.


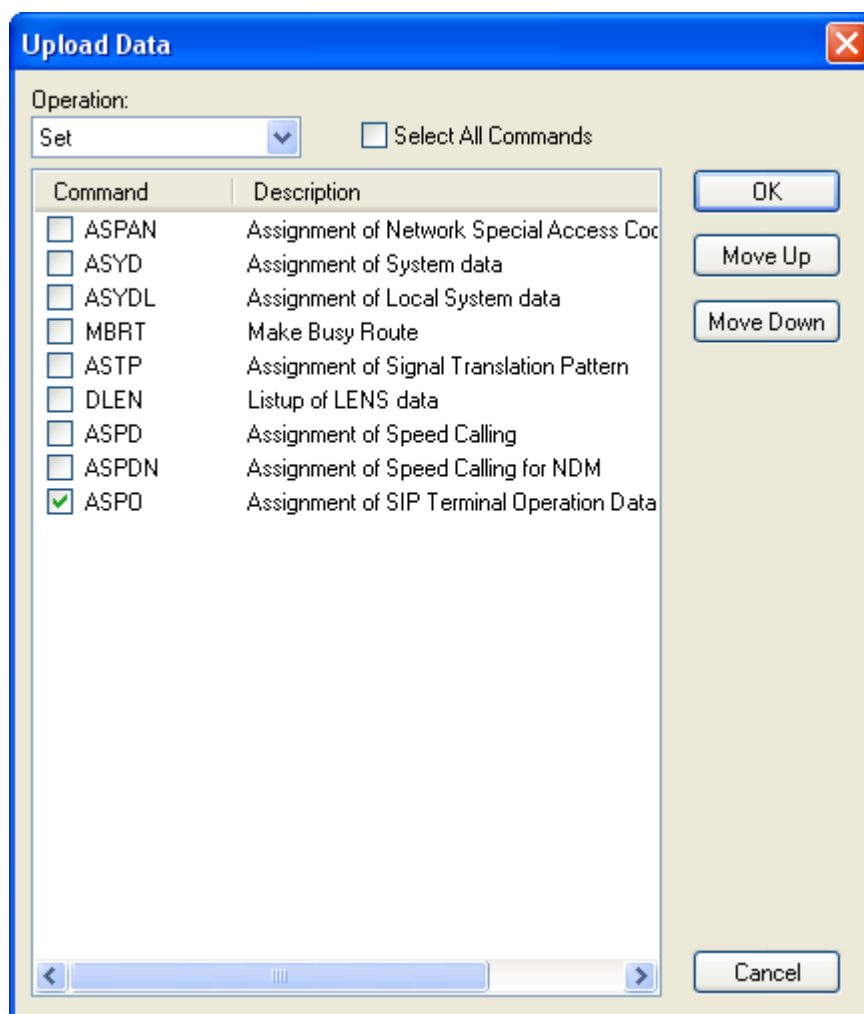
Step 1 From the MA4000 Installation Manager Menu Bar, click the **Upload data to the PBX**  icon. [Figure 2-12](#) displays.

Figure 2-12 Upload Data



Step 2 Use the check box located next to each command to select which command to upload.

—Use the **Select All Commands** check box to include all commands listed for upload.

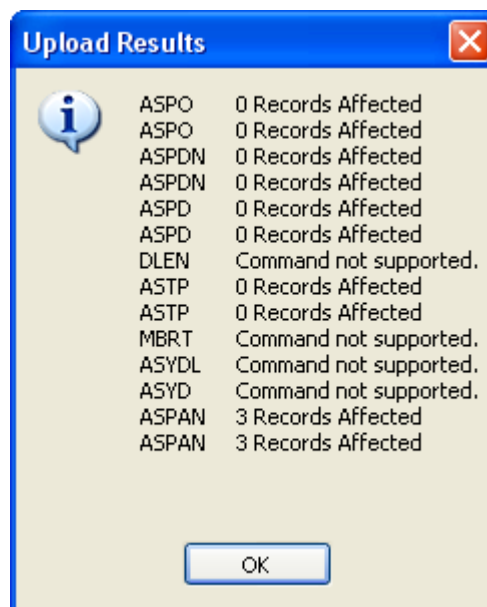
—Use the **Move Up** and **Move Down** buttons to arrange the sequence which commands will be loaded.

—Use the **Operation** field to select an option to use during the upload process. They are:

- Set** Attempts to write command data to the switch. If the command data already exists, you will receive an error.
- Delete** Clears existing command data from the switch.
- Modify** Deletes existing command data and writes the new command data to the switch. Use the **Option** tab to set the delay timer for each command, if necessary. See [“Options” on page 2-11](#).

Step 3 When you are ready, click **OK** to begin the command upload process request. [Figure 2-13](#) displays listing the upload outcome.

Figure 2-13 Upload Results



Options

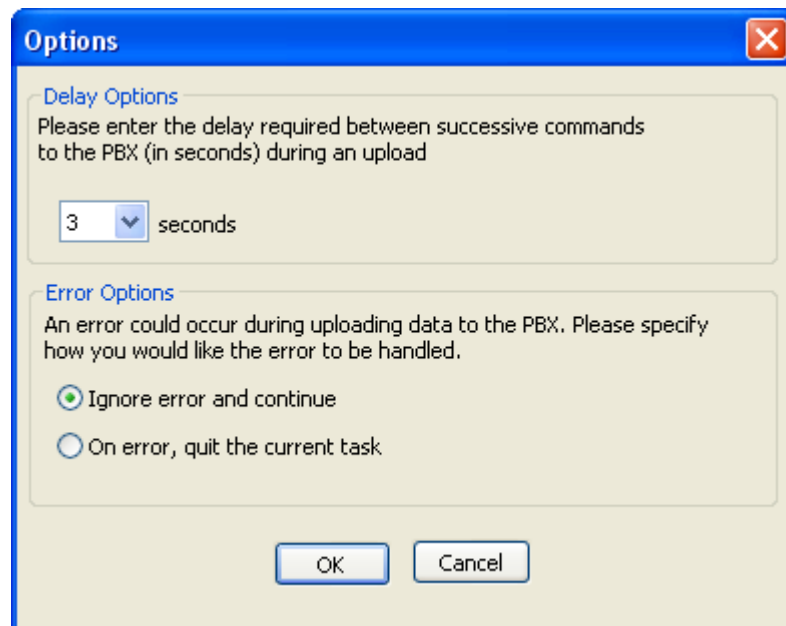
The **Options** menu item provides you the ability to set the time interval (in seconds) to pause between each command being uploaded. This delay slows down the upload process to allow the switch more time to process each command's data.

If an error should occur during the upload process, you can also specify how the error should be managed using this menu item.

To set the delay or error options, do the following:

- Step 1** From the MA4000 Installation Manager Main Menu, select **Options** → **Specify Options**. [Figure 2-14](#) displays.

Figure 2-14 Options



- Step 2** In the **Delay Options** section, select the time interval using the **seconds** drop-down field to indicate the amount of time to pause between each command upload to the switch.
- Step 3** Use the **Error Options** to do the following:
- **Ignore error and continue** - Disregard the data error received and continue with the data upload process.
 - **On error, quit the current task** - End the current data upload.

View Clipboard Log File

To view the MAT Clipboard log file, do the following:

Step From the MAT Clipboard Main Bar, select **Help** → **View Log File**. A result similar to [Figure 2-15](#) displays.

Figure 2-15 Clipboard Log File Example

Clipboard Log File Created: 02/11/09 13:04:19
Exe Version: 26.0.001

Clipboard connecting to System: 172.24.133.47 Port: 60000

Login successful..

```

System Information:
=====
Office Name:   test_new
FPC:          1
System Type:  UNIVERGE SV7000
Format ID:    74
MG Count:     8
Physical PIMs: 4
Virtual PIMs: 12
SIP Terminal: Enabled
SIP MG:       Enabled
MAT Version:  25.03.01.000
ACDP Version: 00.00.00.000
Boot ROM:     K.01.00.000
Main Memory:  25.04.01.000
IP Address:   172.24.133.47
Standby IP:   172.24.132.20
Network Mask: 255.255.255.0
Gateway:      172.24.133.1

```

DownloadData - AAED Assignment of Announcement Equipment data	
START_TN	1
END_TN	1
START_EQP	0
END_EQP	127

***For additional information or support on this NEC Infortia product,
contact your NEC Infrontia representative.***

NEC NEC Infrontia Corporation

MA4000 Installation Manager Clipboard User Guide

NDA-30982, Issue 1