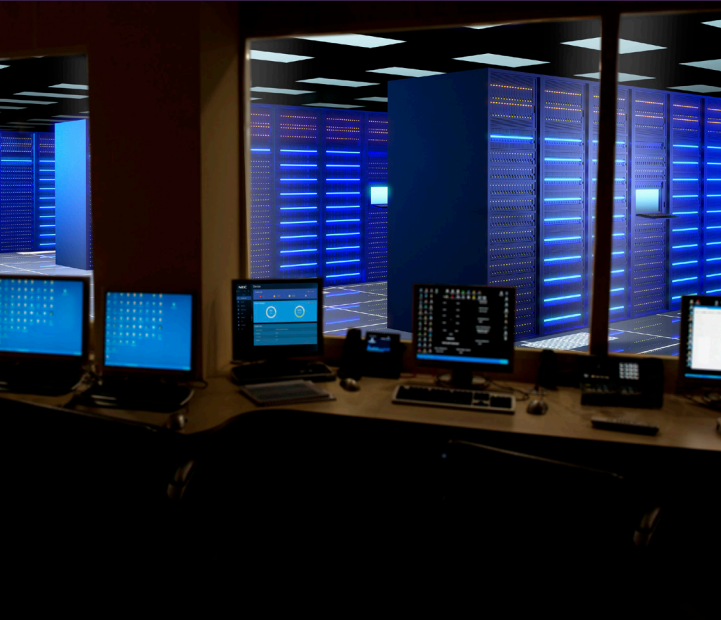


QX-S5200 Series PoE+ Gigabit Ethernet Switches



At a Glance

- Versatile Power over Ethernet Plus (PoE+) switches that can be utilized in SDN (OpenFlow) network environments as edge devices or standalone
- Connects to IP telephones or other devices that require PoE
- Supports NEC's ProgrammableFlow Controller Edge Automation capability which:
 - ◆ Extends some of the SDN functions to non-OpenFlow switches
 - ◆ Simplifies configuration and management of switch
- Saves time and expense by not having to install electrical power wiring
- Offers the flexibility of placing PoE devices where needed most and ability to relocate them easily
- Can be managed by the SDN Controller, WebGUI management console or Command Line Interface (CLI)

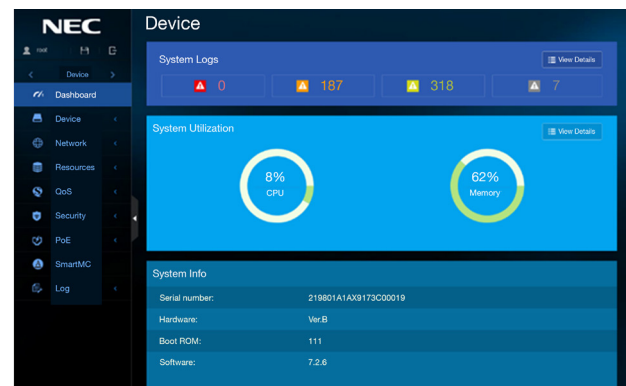
Overview

NEC's QX-S5200 Series Power over Ethernet Plus (PoE+) Gigabit switches offer businesses the flexibility to easily deploy PoE devices wherever needed. These versatile switches can be used as edge devices in a Software Defined Network (SDN) or they can be standalone. The QX-S5200 series fully supports NEC's ProgrammableFlow Controller (PFC) Edge Switch Automation capability, and can be configured and managed directly through the PFC's Graphical User Interface (GUI).

Since a PoE switch enables network cables to carry electrical power, installing additional power outlets is not required – saving time and expense. Another advantage is scalability – PoE enables quick and efficient deployment of network devices.

Main Product Features

- 24 and 48 PoE+ 10/100/1000 Ethernet Ports (can connect to IP phones and other PoE devices that require up to 30W)
- 4 Gigabit SFP Uplink ports
- Support for L2 and L3 forwarding, QoS, Security, Multicast, & VLAN
- Support Static and RIP policy-based Routing functions
- CLI and WebGUI management console
- SDN compatible (OpenFlow version 1.3.1)
- High Speed stack connection function (Intelligent Resilient Framework)



QX-S5200 Series WebGUI

Specifications

Features		S5224GT-4X-PW	S5248GT-4X-PW	
Performance	Switching capacity [bps]	128.0G	176.0G	
	Transfer rate [pps]	95.2M	130.9M	
	Switching method	S&F		
	MAC address table	16K		
	Routing table (IPv4/IPv6)	512/256		
Interface	ARP table	1K		
	10Gbe	SFP slot SFP+ slot	- 4	- 4
	40Gbe	QSFP+ slot	-	-
	Console Port	√		
PoE+	Number of power feedable interfaces	24	48	
	Power feeding standard	IEEE802.3at		
	Maximum power supply amount per port	30.0W		
	Maximum power supply amount per device	370.0W		
IRF	IRF stack version	IRFv2		
	Maximum number of IRF stacks	6		
	MAD/ISSU	√ / -		
VLAN	IEEE802.1Q	√		
	Port VLAN	√		
	Protocol VLAN	√		
	Voice VLAN	√		
	Maximum number of VLAN [number of settable IP addresses]	4094[32]		
	VLAN mapping	√		
	QinQ	√		
Port function	Auto Negotiation/ fixed speed and duplex (full/half)	√ / √		
	Auto MDI • MDIX/ fixed MDIX	√ / √		
	Flow control (IEEE802.3X)	√		
	EAP transmitted/BPDU transmitted	√ / √		
	Port isolate	√		
	Packet transfer suppression	B/M/U		
	Storm-constrain	B/M/U		
	Jumbo Frame (byte)	10000		
	Loop detection (multi port loop supported)	√		
	One-way link detection (DLDP)	√		
	Ethernet OAM (IEEE802.3ah)	√		
	Link aggregation (LACP supported)	√		
Spanning tree	S/R/M/P			
Ring protocol (RRPP)	√			
Packet filter (ACL)	√			
IPv6 management	√			
QoS	PQ	√		
	WRR	√		
	Bandwidth control	LR/CAR/GTS		
	Trust/Marking	√ / √		
	Number of QoS classes	8		

√ = Available
- = Not Available

Specifications (cont.)

Features		S5224GT-4X-PW	S5248GT-4X-PW
Security	802.1X authentication		√
	MAC address authentication		√
	Web authentication		√
	Triple authentication		√
	Port security		√
	Dynamic VLAN		PORT/MAC
Routing related	Local authentication		√
	Static		√
	RIP		v1/v2/ng
	Policy-Based Routing		√
	VRRP		√
	BFD		√
Multicasting	Multicast VLAN		√
	IGMPv1/v2/v3 snooping		√
	MLDv1/v2 snooping		√
SDN Ready	SDN supported	Edge Automation and OpenFlow 1.3.1	
	Maximum flow entry		500
Management function	telnet/ssh/WEB console		√ / √ / √
	FTP • TFTP client/FTP server		√ / √
	LLDP		√
	DHCP		C/R/SV/SN
	NTP client/NTP server		√ / -
	Syslog		√
	Log file		√
	SNMPv1/v2c/v3		√
	Standard MIB, Private MIB		√
	RMON		√
	sFlow		√
	Port mirroring		√
Eco function	Scheduled task		√
	IEEE802.3az		√
Physical specification	External dimension (W x D x H) [mm]	440 x 300 x 43.6	440 x 360 x 43.6
	Weight	5.4kg	6.4kg
	AC power input (50/60Hz)	100~240V (90~264V)	
	Maximum power consumption (PoE fed power included)	475W	502W
	Fanless	-	-
	Operating temperature/humidity (non-condensing required)	0~45°/10~90%	
VCCI ClassA / RoHS support		√ / √	

√ = Available
- = Not Available

S5224GT-4X-PW



S5248GT-4X-PW



Corporate Headquarters (Japan)
NEC Corporation
nec.com

North America (USA & Canada)
NEC Corporation of America
necam.com

NEC Enterprise Solutions
NEC Europe Ltd
nec-enterprise.com

APAC
NEC Asia Pacific Pte Ltd
sg.nec.com

Latin America
NEC Latin America
latam.necam.com

About NEC Corporation of America: Headquartered in Irving, Texas, NEC Corporation of America is a leading technology integrator providing solutions that improve the way people work and communicate. NEC delivers integrated Solutions for Society that are aligned with our customers' priorities to create new value for people, businesses and society, with a special focus on safety, security and efficiency. We deliver one of the industry's strongest and most innovative portfolios of communications, analytics, security, biometrics and technology solutions that unleash customers' productivity potential. Through these solutions, NEC combines its best-in-class solutions and technology, and leverages a robust partner ecosystem to solve today's most complex business problems. NEC Corporation of America is a wholly-owned subsidiary of NEC Corporation, a global technology leader with a presence in 160 countries and \$28 billion in revenues. For more information, visit necam.com.