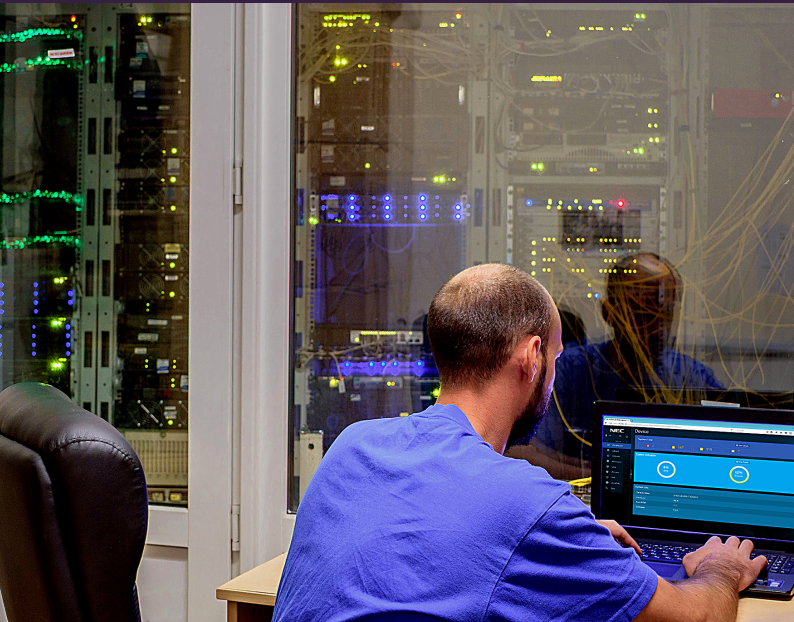


QX-S4300

10 Gigabit Ethernet Switches



At a Glance

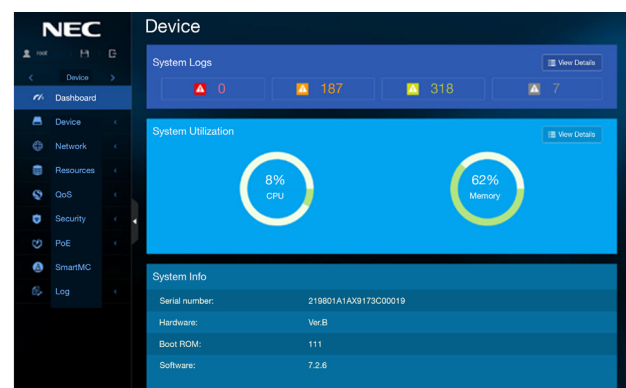
- Low cost 10 Gigabit Ethernet switches with 8 or 14 copper ports and 2 SFP+ uplinks
- In conjunction with QX-S5200 series, (1 GB PoE access switches with 10 GB Ethernet up-links) the QX-S4100 and QX-S1000 series (1 GB PoE access switch with 1 GB Ethernet up-links) can be used to implement a complete Enterprise network
- Attractive cost makes these switches ideal where high 10 GB throughput is required, as an example in an HCI node aggregation

Overview

NEC's QX-S4300 Series 10 Gigabit Ethernet switches offer businesses the flexibility to easily deploy. These versatile switches can be used in a Software Defined Network (SDN) or they can be standalone. The QX-S4300 series fully supports NEC's Network Operation Engine (NOE) and can be configured and managed directly through the NOE's Graphical User Interface (GUI).

Main Product Features

- 8 or 14 Ethernet ports 10 GB/5 GB/2.5 GB/1000BASE-T autosensing
- 2 Ethernet ports 10 Gigabit SFP+
- 1 Management Ethernet port
- USB and Console ports
- Support for L2 and basic L3 forwarding, QoS, Security, Multicast, and VLAN
- Support Static Routing functions
- CLI and WebGUI management console
- High Speed stack connection function (Intelligent Resilient Framework)



QX-S4300 Series WebGUI

Specifications

Features			S4308XT-2X		S4314XT-2X	
Performance	Switching Capacity [bps]		200.0 GB		320.0 GB	
	Transfer Rate [pps]		148.8 MB		238.0 MB	
	Switching Method		Store & Forward			
	MAC Address Table		32 K			
	Routing Table (IPv4/IPv6)		16 K / 8 K			
Interface	ARP Table		7.5 K			
	100 MB	10/100 BASE-TX	-		-	
	1 Gbe	10/100/1000 BASE-T SFP + Slot	-		-	
	10 Gbe	1/10 GBASE-T	8		14	
		SFP + Slot	2		2	
	40 Gbe	QSFP + Slot	-		-	
	Number of extension card slots		-		-	
	Management Port		1		1	
	Console Port		√		√	
IRF Stack	IRF Stack Version		9			
	MAD/ISSU		√ / √			
VLAN	IEEE 802.1Q		√			
	Port VLAN		√			
	Protocol VLAN		√			
	IP Subnet-based VLAN		-			
	Isolate-user VLAN		√			
	Voice VLAN		√			
	Maximum number of VLAN [number of settable IP addresses]		4094[1024]			
	VLAN Mapping		√			
	QinQ		√			
Port Function	Auto Negotiation/ Fixed Speed and Duplex (full/half)		√ / √			
	Auto MDI • MDIX/ fixed MDIX		√ / √			
	Flow Control (IEEE 802.3X)		√			
	EAP Transmission/BPDU Transmission		√ / √			
	Port Isolate		√			
	Packet Transfer Suppression		B/M/U			
	Storm-Constrain		B/M/U			
	Jumbo Frame (byte)		10000			
	Loop Detection (multi port loop supported)		√			
	One-way Link Detection (DLDP)		√			
	Ethernet OAM (IEEE 802.3ah)		-			
	Link aggregation (LACP Support)		√			
Spanning Tree			S/R/M/P			
Ring Protocol (RRPP)			√			
Packet Filter (ACL)			√			
IPv6 Management			√			
QoS	SPQ/WRR/WFQ/WRED		√ / √ / - / -			
	Bandwidth Control		LR/CAR/GTS			
	Trust/Marking		√ / √			
	Number of QoS Classes		8			

Legend

√ = Supported

- = Not Available

Specifications (cont.)

Features		S4308XT-2X	S4314XT-2X
Security	802.1X Authentication	-	
	MAC Address Authentication	-	
	Web Authentication	-	
	Multi-step Authentication	-	
	Triple Authentication	-	
	Port Security	-	
	Dynamic VLAN	-	
	Local Authentication	√	
Routing Related	Static	√	
	RIP	-	
	OSPF	-	
	BGP	-	
	Policy-Based-Routing	-	
	VRRP	-	
	BFD	√	
	VRF-Lite (MCE)	-	
Multicast	Multicast VLAN	√	
	IGMPv1/v2/v3 Snooping	√	
	MLDv1/v2 Snooping	√	
	IGMPv1/v2/v3	-	
	MLDv1/v2	-	
	PIM-SM/PIM-SSM	-	
Tunnel		-	
VXLAN/EVPN		-	
NetMeister		-	
Management Function	TELNET/SSH/WEB Console	√ / √ / -	
	FTP • TFTP client/FTP Server	√ / √	
	LLDP	√	
	DHCP	C/R/SV/SN	
	NTP Client/NTP Server	√ / -	
	Syslog	√	
	Log File	√	
	SNMPv1/v2c/v3	√	
	Standard MIB, Private MIB	√	
	RMON	√	
	sFlow	√	
	Port Mirroring	√	
Eco-Function	EEE(IEEE 802.3az)	√	
	Scheduled Task	√	
Physical Specification	External dimension (W x D x H) [mm]	440 x 260 x 43.6	
	Weight	3.6 kg	3.7 kg
	AC power input (50/60Hz)	100~240 V (90~290 V)	
	Maximum Power Consumption	44 W	60 W
	Redundant Power Source		
	Fanless	-	-
	Operating temperature/ Humidity (non-condensing required)	0~45 °C / 10~90%	
USB Memory		USB-2G	
VCCI ClassA/ RoHS Support		√ / √	

QX-S4308XT-2X



QX-S4314XT-2X



Corporate Headquarters (Japan)
NEC Corporation
nec.com

North America (USA & Canada)
NEC Corporation of America
necam.com

NEC Enterprise Solutions
NEC Europe Ltd
nec-enterprise.com

APAC
NEC Asia Pacific Pte Ltd
sg.nec.com

Latin America
NEC Latin America
latam.necam.com

About NEC Corporation of America: Headquartered in Irving, Texas, NEC Corporation of America is a leading technology integrator providing solutions that improve the way people work and communicate. NEC delivers integrated Solutions for Society that are aligned with our customers' priorities to create new value for people, businesses and society, with a special focus on safety, security and efficiency. We deliver one of the industry's strongest and most innovative portfolios of communications, analytics, security, biometrics and technology solutions that unleash customers' productivity potential. Through these solutions, NEC combines its best-in-class solutions and technology, and leverages a robust partner ecosystem to solve today's most complex business problems. NEC Corporation of America is a wholly-owned subsidiary of NEC Corporation, a global technology leader with a presence in 160 countries and \$25 billion in revenue. For more information, visit necam.com.

NEC Corporation of America

© 2021 NEC Corporation of America. NEC is a registered trademark of NEC Corporation. All rights reserved.
Other product or service marks mentioned are the trademarks of their respective owners.

HW21000 | v.08.04.21