

UCE Dterm Applications

Installation Guide

NEC NEC Infrontia, Inc.

November 2010
NDA-30911, Revision 2

Liability Disclaimer

NEC Infrontia, Inc. reserves the right to change the specifications, functions, or features, at any time, without notice.

NEC Infrontia, Inc. has prepared this document for the exclusive use of its employees and customers. The information contained herein is the property of NEC Infrontia, Inc. and shall not be reproduced without prior written approval from NEC Infrontia, Inc.

NEAX and Dterm are registered trademarks of NEC Corporation.
OW5000 is a trademark of NEC Infrontia, Inc.

© 2010 NEC Infrontia, Inc.

Microsoft and Windows are registered trademarks of Microsoft Corporation.

All other brand or product names are or may be trademarks or registered trademarks of, and are used to identify products or services of, their respective owners.

Contents

Introduction	1-1
What is UCE Dterm Applications?	1-1
How This Guide is Organized	1-1
Using This Guide	1-2
<hr/>	
Installing UCE Dterm Applications	2-1
Before Starting the Installation Procedure	2-1
UNIVERGE OW5000 Server	2-1
Installing UCE Dterm Applications	2-2
Uninstalling UCE Dterm Applications	2-8
<hr/>	
Configuring UCE Dterm Applications	3-1
Adding a New OW5000 User	3-1
Assigning an Extension	3-4
Assigning an API License	3-6



Figures

Figure	Title	Page
2-1	Extracting Files dialog box	2-2
2-2	Decompressing dialog box	2-3
2-3	Welcome dialog box	2-3
2-4	Software License Agreement dialog box	2-4
2-5	Destination Folder dialog box	2-4
2-6	Ready to Install dialog box.	2-5
2-7	Select Platform Computer dialog box	2-5
2-8	Serial Number/Activation Key dialog box.	2-6
2-9	Creating IIS Virtual Directory dialog box	2-7
2-10	Installation Complete dialog box	2-7
3-1	Person Management dialog box	3-2
3-2	Roles dialog box	3-3
3-3	Add Role dialog box.	3-3
3-4	Contact Methods dialog box	3-4
3-5	New Contact Method dialog box	3-4
3-6	Extension Management dialog box	3-5
3-7	Enable Extension dialog box	3-6



1

Introduction

Welcome to the UCE Dterm Applications Installation Guide. This guide provides the information you need to install and configure the UCE Dterm Applications.

- Chapter Topics*
- [What is UCE Dterm Applications?](#)
 - [How This Guide is Organized](#)
 - [Using This Guide](#)

What is UCE Dterm Applications?

UCE Dterm Applications allows users to access OW5000 features directly from their XML-enabled phones. UCE Dterm Applications users can browse their call history, search the directory, view location status information, and make calls all from a single device. It offers access to the following OW5000 features:

- Corporate and Personal Directory
- Communication History
- Location Status

How This Guide is Organized

- | | |
|--|--|
| <i>Chapter 1
Introduction</i> | This chapter outlines how to use the manual, including the organization and chapter layout for the UCE Dterm Application. |
| <i>Chapter 2
Installing UCE Dterm
Applications</i> | This chapter describes the initial requirements for installing the UCE Dterm Applications, along with the step-by-step procedures needed to install the application. |
| <i>Configuring UCE Dterm
Applications</i> | This chapter describes the information and procedures needed for configuring the UCE Dterm Applications. |

Using This Guide

This guide is designed to make the UCE Dterm Applications easy to understand and simple to use. There are examples of the screens displayed during the DT750/INASET installation, with step-by-step instructions for the procedures you need to perform.



NOTE

The screens and procedures shown in this guide represent the typical installation of UCE Dterm Applications. Remember that this application can be customized for each site, so the screens shown in this guide may not always reflect what displays on your attendant station.

2

Installing UCE Dterm Applications

This chapter provides step-by-step procedures necessary to install and configure the UCE Dterm Applications software so that it can be available to DT750/INASET users.

The following topics are included in this chapter.

- Chapter Topics*
- [Before Starting the Installation Procedure](#)
 - [Installing UCE Dterm Applications](#)
 - [Uninstalling UCE Dterm Applications](#)

Before Starting the Installation Procedure

This section describes the required components that must be in place before installing the UCE Dterm Applications.



NOTE

Each PBX must be configured for use with OAI before installing the application software.

UNIVERGE OW5000 Server

Prior to installing any UCE Dterm Applications or Microsoft database, please refer to the Requirements section in the UNIVERGE OW5000 System Manual to verify that your system meets the Application Environment requirements for the OW5000 Runtime Platform and specific UCE Dterm Applications software you purchased. The OW5000 Runtime Platform must be installed before you install the UCE Dterm Applications. For instructions on how to install the OW5000 Runtime Platform, refer to the UNIVERGE OW5000 System Manual.

Installing UCE Dterm Applications

Use the following steps to install the UCE Dterm Applications software.

- Step 1** Place the UC700 CD into the computer's CD-ROM drive. On most computers, setup will automatically start when the CD is loaded. If Autorun is not enabled on the computer, do the following:
- After placing the UC700 CD into the computer's CD-ROM drive, open Windows Explorer and double-click the **CD-ROM drive** icon.
 - In the CD-ROM file list, double-click the **Setup.exe** file. An Extracting Files dialog box displays (Figure 2-1) and then Figure 2-2 displays.

Figure 2-1 Extracting Files dialog box

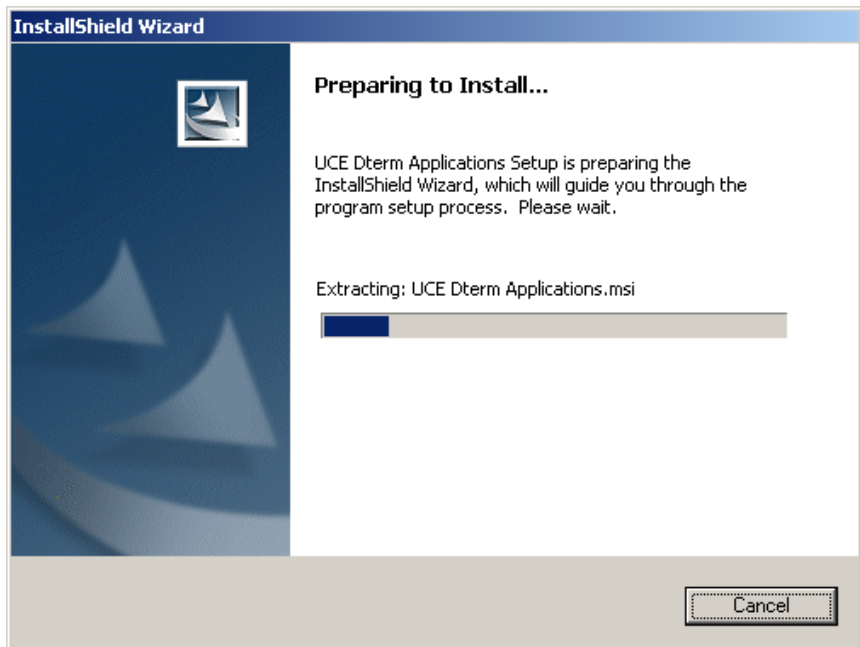
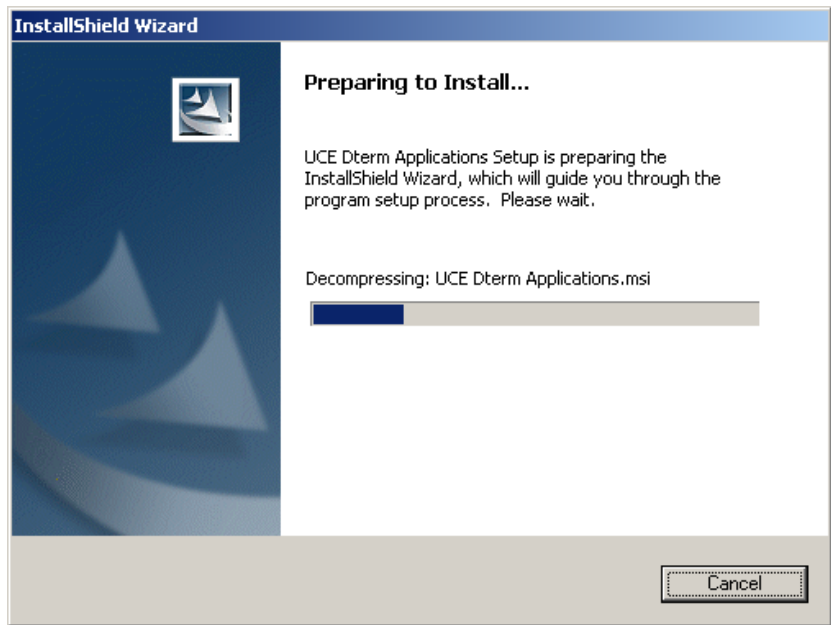
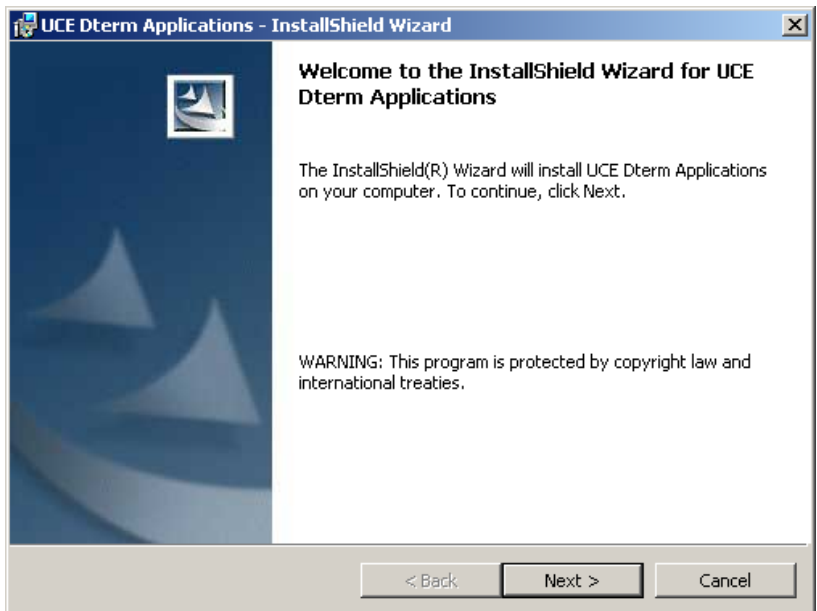


Figure 2-2 Decompressing dialog box

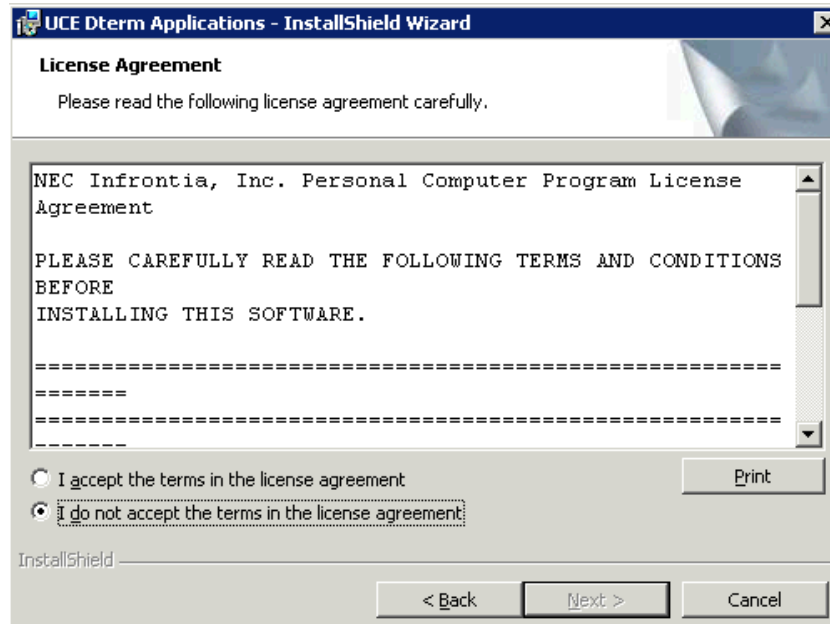


After all files are decompressed, a Welcome dialog box displays (Figure 2-3).

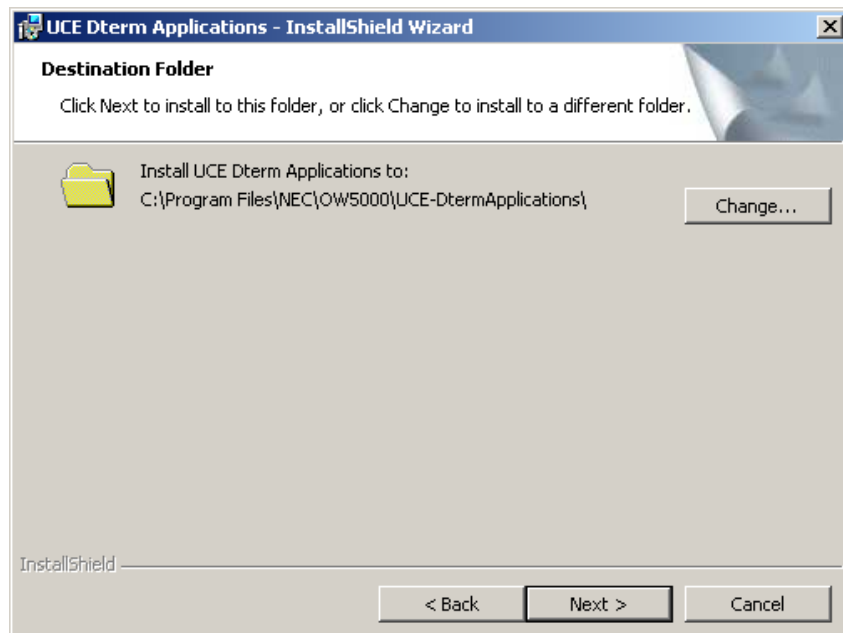
Figure 2-3 Welcome dialog box



Step 2 Click **Next**. A Software License Agreement dialog box displays (Figure 2-4).

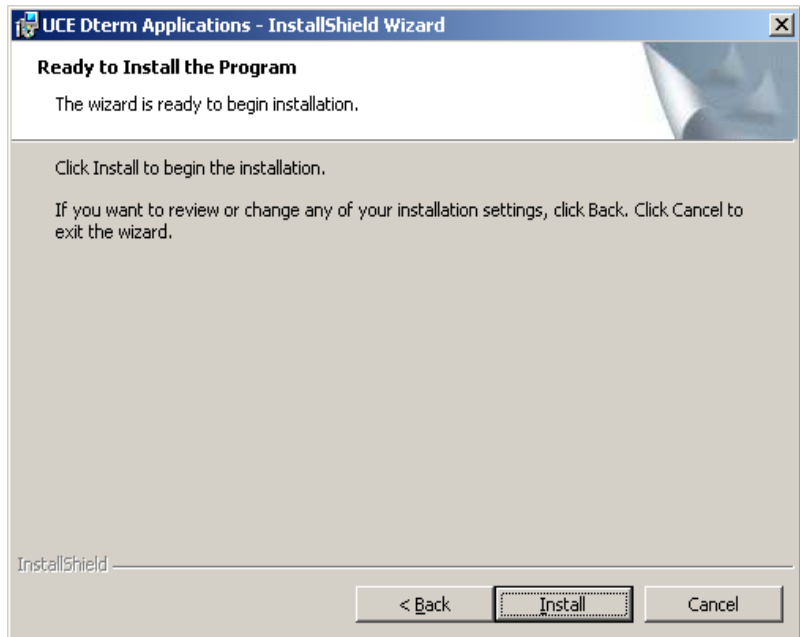
Figure 2-4 Software License Agreement dialog box

- Step 3** Review the license agreement in the list box and click **Yes** to accept the terms of the agreement and to continue the installation. A Destination Folder dialog box displays (Figure 2-5).

Figure 2-5 Destination Folder dialog box

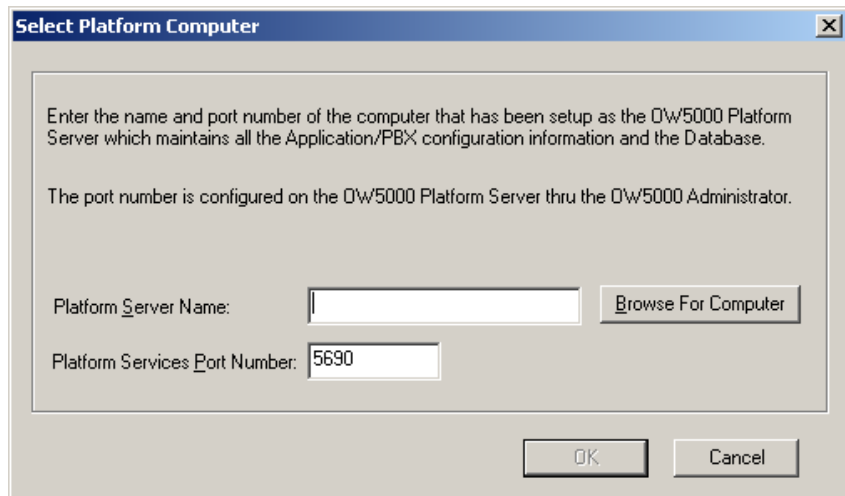
Select the desired installation folder and click **Next**, or click **Change** to install to a different location. A Ready to Install dialog box displays (Figure 2-6).

Figure 2-6 Ready to Install dialog box

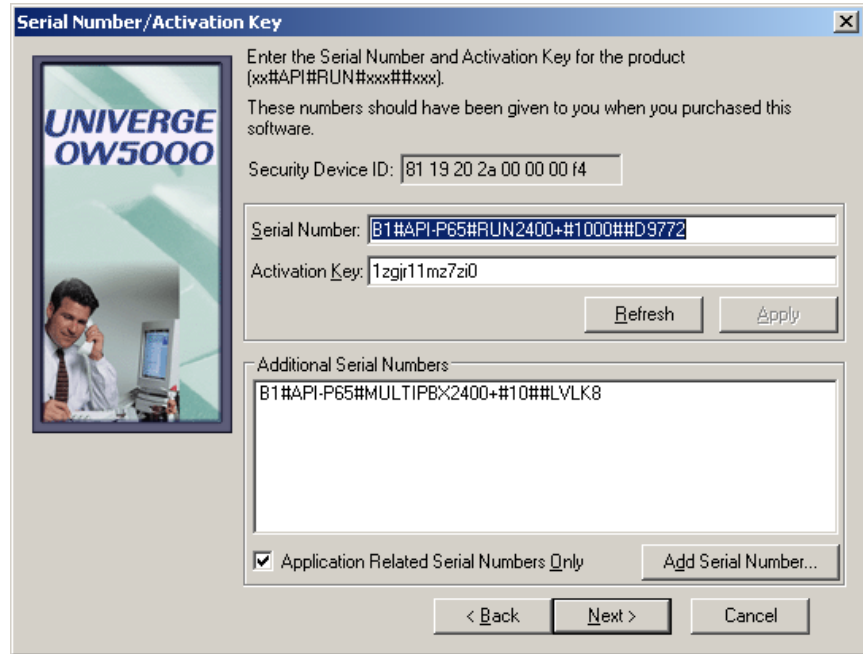


Step 4 Click **Install**. A Select Platform Computer dialog box displays (Figure 2-7)

Figure 2-7 Select Platform Computer dialog box



Step 5 Enter the server name and port number of the OW5000 Platform and then click **OK**. A Serial Number/Activation Key dialog box displays (Figure 2-8).

Figure 2-8 Serial Number/Activation Key dialog box

Step 6 The **Serial Number** and **Activation Key** for this installation is automatically entered during the initial installation. Click **Next** or do one of the following:

—Click **Refresh** if the serial number/activation key was previously displayed and is not displayed now.



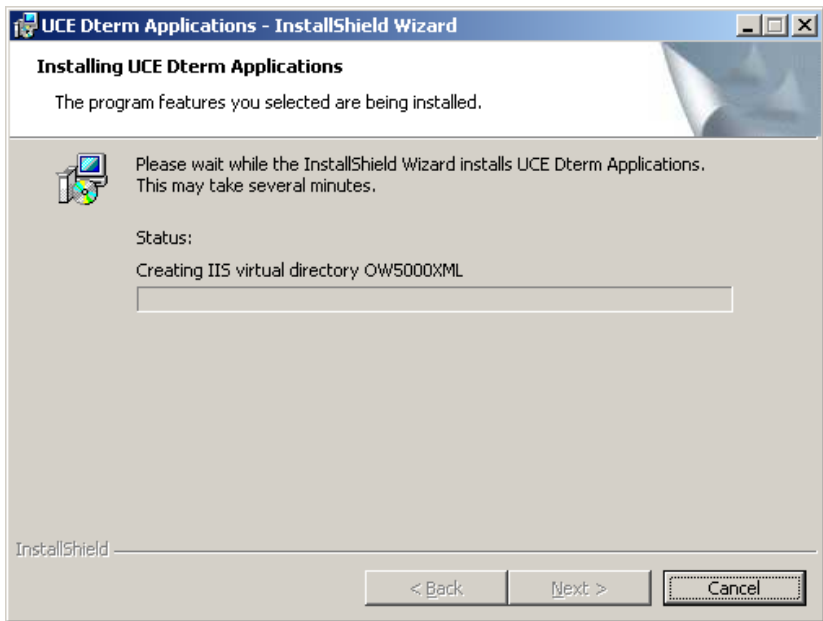
Make sure the security key or dongle is securely in place.

—Click **Advanced** to examine the numbers, add or delete numbers, or to add or remove drivers. Do this only if authorized by an NEC certified technician.

Step 7 Type in the additional serial number/activation key and click **OK**.

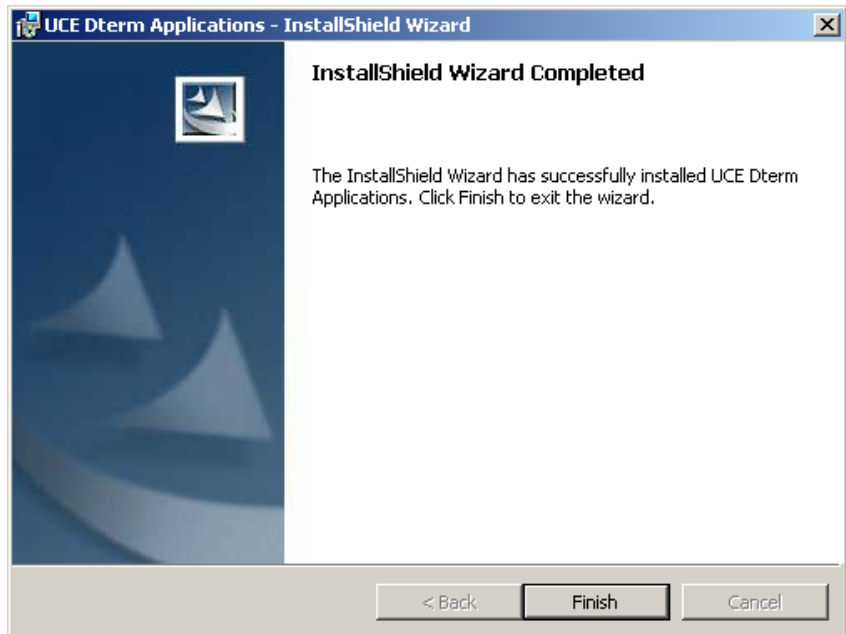
Step 8 Click **Next**. A Creating IIS Virtual Directory dialog box displays (Figure 2-9).

Figure 2-9 Creating IIS Virtual Directory dialog box



Step 9 Click **Next**. An Installation Complete dialog box displays (Figure 2-10).

Figure 2-10 Installation Complete dialog box



Uninstalling UCE Dterm Applications

The UCE Dterm Applications software can be uninstalled using the Windows operating system Add/Remove software function in the Windows Control Panel. Refer to the Windows documentation for the specific version of Windows installed.

3

Configuring UCE Dterm Applications

OW5000 Administrator is an OW5000 Runtime Platform utility used to configure OW5000 applications and tools. It also provides a graphical user interface to modify OW5000 user account information.

This chapter describes the functions and associated screen displays for configuring UCE Dterm Applications in OW5000 Administrator.

Chapter Topics

- [Adding a New OW5000 User](#)
- [Assigning an Extension](#)
- [Assigning an API License](#)

Adding a New OW5000 User

UCE Dterm Applications requires a dedicated OW5000 user with an API license. To configure a new user, you must login to the OW5000 Administrator. Refer to the OW5000 System Manual for more information on how to login to the OW5000 Administrator.

- Step 1** Once you are logged into the OW5000 Administrator, follow the path **OW5000 > Directory > People > Add New Person** to add a new user. A Person Management dialog box displays ([Figure 3-1](#)).

Figure 3-1 Person Management dialog box

The screenshot shows a dialog box titled "Current:" with a person icon. It has four tabs: "Person" (selected), "Roles", "Contact Methods", and "Addresses". The "Person" tab contains the following fields:

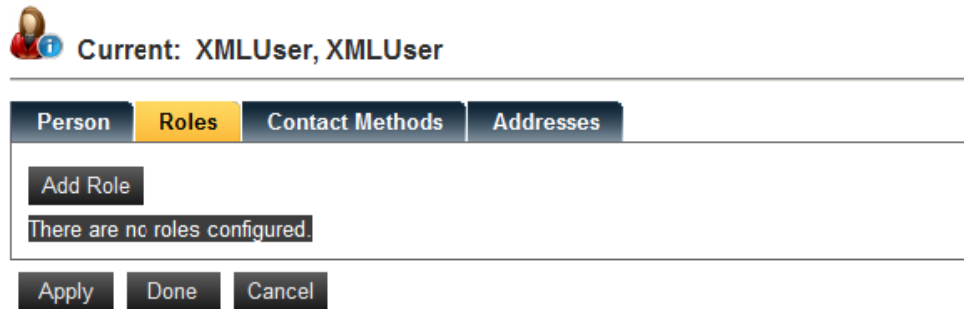
- * Last Name:
- * First Name:
- Middle Name:
- Display Name:
- Prefix:
- Suffix:
- SIP URI:
- SIP Access Server:
- SIPUA Group:
- IM URI:
- IM Access Server:
- Voice Mail Server:
- Subscriber ID:
- Add Photo:
- UserDefined1:
- UserDefined2:
- UserDefined3:
- UserDefined4:
- UserDefined5:
- UserDefined6:
- Note:

At the bottom of the dialog box are three buttons: "Apply", "Done", and "Cancel".

Step 2 Enter the **First Name** and **Last Name** for the user and click **Apply**.

Step 3 Click on the **Roles** tab. A Roles dialog box displays (Figure 3-2).

Figure 3-2 Roles dialog box



Step 4 Click **Add Role** to display an Add Role dialog box (Figure 3-3).

Figure 3-3 Add Role dialog box



Step 5 Select **User** from the drop-down menu.

Step 6 Enter a **Login ID** and a **New Password** in the text box fields. Enter the password again in the **Confirm New Password** field.

Step 7 Click **Apply** to save the role.

Assigning an Extension

Licenses are assigned by extension so the new user must have a primary extension. To assign an extension, complete the steps below.

- Step 1** Click on the **Contact Methods** tab. A Contact Methods dialog box displays (Figure 3-4).

Figure 3-4 Contact Methods dialog box

Current: XMLUser, XMLUser

Person Roles **Contact Methods** Addresses

Add New Contact Method

There are no contact methods configured.

Apply Done Cancel

- Step 2** Click **Add New Contact Method**. A New Contact Method dialog box displays (Figure 3-5).

Figure 3-5 New Contact Method dialog box

Current: XMLUser, XMLUser

Person Roles **Contact Methods** Addresses

* Contact Method: Primary Extension

* Priority: 1

* Pbx Name: NECPBX1

* Extension: Add New Extension

Starts With Search

1 - 5 of 701 records 5 Results per page Page: 1 of 141 > >>

Extension	Tenant	E164 Number
> 2247	1	
> 2284	1	
> 3917	1	
> 10660	1	
> 11079	1	

1 - 5 of 701 records 5 Results per page Page: 1 of 141 > >>

Dterm Password:

Confidentiality Status: None

SIPURI:

Access Server:

Apply Done Cancel

- Step 3** Select **Primary Extension** from the **Contact Method** drop-down list.

- Step 4** Select the PBX from the **Pbx Name** drop-down list. You can either use an existing extension by selecting it from the list, or you can create a new extension. If you select an existing extension, skip to [Step 6](#).

Step 5 To create a new extension, click **Add New Extension**. An Extension Management dialog box displays (Figure 3-6).

Figure 3-6 Extension Management dialog box

*Extension: 55557
 * PBX: NECPBX1
 * PhoneType: DTerm
 * Tenant: 1
 E.164 Country: United States of America (1)
 E.164 Number:
 telURI:
 SIPURI:
 SIP Access Server: Not Assigned
 Collaboration:
 Is Monitored:
 Sublines: Add Subline
 There are no sublines defined.
 Apply Done Cancel

Step 6 Enter the **Extension** number and select **DTerm** in the **Phone Type** drop-down list.



IMPORTANT

Be sure the **Is Monitored** check box is unchecked, as shown in Figure 3-6.

Step 7 Click **Apply** to save the Contact Method.

Assigning an API License

The new user must have an API license. To assign a license to the user's extension, you must login to the OW5000 Administrator. Refer to the OW5000 System Manual for more information on how to login to the OW5000 Administrator.

Once you are logged into the OW5000 Administrator, follow the path **OW5000 > Platform > License**. A License Management screen displays.

Step 1 Click the **Enable Extensions** tab. An Enable Extensions dialog box displays (Figure 3-7).

Figure 3-7 Enable Extension dialog box

The screenshot shows the 'License Management' dialog box with the 'Enable Extensions' tab active. It features a table with the following data:

	PRESENCE		API	
	Total	Ent.	Total	Ent.
Installed	1000	1000	1000	1000
Current	46	46	47	47

Below the table, there is a 'PBX' dropdown menu set to 'NECPBX1', a 'Search' field containing '5557', and a 'Search' button. There are also checkboxes for 'Check All: PRESENCE' and 'API'. At the bottom, there is an 'Apply' button.

Step 2 Select the PBX from the **PBX** drop-down list.

Step 3 Enter the user's extension number in the **Search** field and then press **Search**.

Step 4 In the search results list, check the API field next to the extension (Figure 3-7).

Step 5 Click **Apply** to save the license.

You have now installed and completed the configuration of UCE Dterm Applications. You can exit the OW5000 administrator by pressing **Logout** or by closing the browser.

Refer to the UCE Dterm Applications User Guide for information on setting up the phones and using the application.

For additional information or support on this NEC Infrontia, Inc. Solutions product, contact your NEC Infrontia, Inc. representative.

NEC NEC Infrontia, Inc.

UCE Dterm Applications Installation Guide

NDA-30911, Revision 2