

# Installation Guide

Express5800 Series

# NEC ExpressUpdate Agent

Chapter 1 Summary

Chapter 2 System Requirements

Chapter 3 Installation

Chapter 4 Precautions for Use

## Contents

---

Contents.....	2
Trademarks .....	3
External Libraries which this product uses.....	4
About This Document .....	5
Chapter1 Summary .....	6
Chapter2 System Requirements .....	7
Chapter3 Installation .....	9
3.1 NEC ExpressUpdate Agent Installation for Windows .....	9
3.1.1 Check before installation .....	9
3.1.2 Start installation menu .....	9
3.1.3 Install NEC ExpressUpdate Agent.....	10
3.2 NEC ExpressUpdate Agent Uninstallation for Windows .....	13
3.2.1 Check before uninstallation .....	13
3.2.2 Uninstall NEC ExpressUpdate Agent .....	13
3.3 NEC ExpressUpdate Agent Installation for Linux.....	14
3.3.1 Check before installation .....	14
3.3.2 Copy and extract NEC ExpressUpdate Agent installer.....	14
3.3.3 Install NEC ExpressUpdate Agent.....	15
3.4 NEC ExpressUpdate Agent Uninstallation for Linux .....	16
3.4.1 Check before installation .....	16
3.4.2 Uninstall NEC ExpressUpdate Agent .....	16
Chapter4 Precautions for Use.....	17
4.1 NEC ExpressUpdate Agent Installation.....	17
4.2 The change of the IP address of Operating System .....	18
4.3 Windows Firewall.....	18
4.4 Linux Firewall .....	18
4.5 The Server Management Driver on the managed server .....	18
4.6 Windows Data Execution Prevention (DEP) function.....	19
4.7 Without Windows Print Spooler service.....	21

## Trademarks

NEC ExpressUpdate, EXPRESSBUILDER, NEC ESMPRO are trademarks of NEC Corporation. Microsoft, Windows, Windows Vista, Windows Server are registered trademarks or trademarks of Microsoft Corporation in the United States and other countries.

Linux is registered trademarks or trademarks of Linus Torvalds in the United States and other countries.

Red Hat is registered trademarks of Red Hat, Inc. and its subsidiaries in the United States and other countries.

MIRACLE LINUX is a registered trademark of MIRACLE LINUX CORPORATION.

Asianux is a registered trademark of MIRACLE LINUX CORPORATION in Japan.

SUSE is a trademark of SUSE LINUX Products GmbH, a Novell business.

VMware is a registered trademark or trademark of VMware, Inc. in the United States and/or other jurisdictions.

Oracle and Java are registered trademarks of Oracle and/or its affiliates in the United States and other countries.

All other product, brand, or trade names used in this publication are the trademarks or registered trademarks of their respective trademark owners.

Windows Server 2012 R2 stands for Microsoft® Windows Server® 2012 R2, Standard Edition operating system and Microsoft® Windows Server® 2012 R2, Datacenter Edition operating system. Windows 8.1 stands for Windows® 8.1 Pro and Windows® 8.1 Enterprise. Windows Server 2012 stands for Microsoft® Windows Server® 2012 Standard Edition operating system and Microsoft® Windows Server® 2012 Datacenter Edition operating system. Windows 8 stands for Windows® 8 Pro and Windows® 8 Enterprise. Windows Server 2008 R2 stands for Microsoft® Windows Server® 2008 R2, Standard Edition operating system and Microsoft® Windows Server® 2008 R2, Enterprise Edition operating system and Microsoft® Windows Server® 2008 R2, Datacenter Edition operating system. Windows 7 stands for Windows® 7 Professional and Windows® 7 Enterprise and Windows® 7 Ultimate. Windows Server 2008 stands for Microsoft® Windows Server® 2008 Standard Edition operating system and Microsoft® Windows Server® 2008 Enterprise Edition operating system and Microsoft® Windows Server® 2008 Datacenter Edition operating system and Microsoft® Windows Server® 2008 Standard 32-Bit operating system and Microsoft® Windows Server® 2008 Enterprise 32-Bit operating system and Microsoft® Windows Server® 2008 Datacenter 32-Bit operating system. Windows Vista stands for Microsoft® Windows Vista® Business operating system and Windows Vista® Enterprise operating system and Windows Vista® Ultimate. Windows Server 2003 x64 Editions stands for Microsoft® Windows Server® 2003 R2, Standard x64 Edition operating system and Microsoft® Windows Server® 2003 R2, Enterprise x64 Edition operating system, or Microsoft® Windows Server® 2003 Standard x64 Edition operating system and Microsoft® Windows Server® 2003 Enterprise x64 Edition operating system. Windows Server 2003 stands for Microsoft® Windows Server® 2003 operating system and Microsoft® Windows Server® 2003 Standard Edition and Enterprise Edition. Windows XP x64 Edition stands for Microsoft® Windows® XP Professional x64 Edition operating system. Windows XP stands for Microsoft® Windows® XP Professional operating system and Microsoft® Windows® XP Home Edition operating system.

## External Libraries which this product uses

This product contains libraries ("External Libraries") provided by the third party suppliers ("Suppliers"). Please assume and agree these libraries' license documents and NOTICE files before using this product. License documents and NOTICE files of "External Libraries" are stored in the following folders.

/eu\_agent/doc

If the "External Libraries" require to include their Source Code with this product, see the folder below.

/eu\_agent/src

The libraries listed below are "External Libraries." Notwithstanding any of the terms in the Agreement or any other agreement You may have with NEC:

- (a) "Suppliers" provide the libraries WITHOUT WARRANTIES OF ANY KIND and, such Suppliers DISCLAIM ANY AND ALL EXPRESS AND IMPLIED WARRANTIES AND CONDITIONS INCLUDING, BUT NOT LIMITED TO, THE WARRANTY OF TITLE, NON-INFRINGEMENT OR INTERFERENCE AND THE IMPLIED WARRANTIES AND CONDITIONS OF MERCHANTABILITY AND FITNESS FOR A PARTICULAR PURPOSE, WITH RESPECT TO THE EXTERNAL LIBRARIES;
- (b) In no event are the Suppliers liable for any direct, indirect, incidental, special, exemplary, punitive or consequential damages, including but not limited to lost data, lost savings, and lost profits, with respect to the External Libraries; and,
- (c) NEC and the Suppliers are not liable to You, and will not defend, indemnify, or hold You harmless for any claims arising from or related to the External Libraries.

The following are External Libraries and their Copyright.

Apache Axis2, Apache Rampart : Copyright © The Apache Software Foundation

libiconv : Copyright © Free Software Foundation, Inc.

libxml2 : Copyright © Daniel Veillard. All Rights Reserved

OpenSLP : Copyright © Caldera Systems, Inc.

OpenSSL : Copyright © The OpenSSL Project

zlib : Copyright © Jean-loup Gailly and Mark Adler

### ■ Notes

- (1) No part of this document may be reproduced in any form without the prior written permission of NEC Corporation.
- (2) The contents of this document may be revised without prior notice.
- (3) The contents of this document shall not be copied or altered without the prior written permission of NEC Corporation.
- (4) All efforts have been made to ensure the accuracy of all information in this document. If you notice any part unclear, incorrect, or omitted in the document, contact your authorized NEC sales representative.
- (5) NEC assumes no liability for damages arising from the use of this product, nor any liability for incidental or consequential damages arising from the use of this document regardless of (4).

## About This Document

---

This document explains the procedures of "NEC ExpressUpdate Agent" installation.

Before attempting to operate the NEC ExpressUpdate Agent, read this document so as to gain an adequate understanding of the contents.

### ■ Notes

This document is intended for persons who are familiar with the operating system's functions and operations and the network's functions and setup. For operations and inquiries about the operating system, see its online help information.

This document covers universal information about generally managed servers. The notes and restrictions on use of each product as a managed server are explained in the user's guide provided with the managed server and "NEC ESMPRO Manager Ver.5 Setup guide".

Names used with screen images in this document are fictitious. They are unrelated to existing product names, names of organizations, or individual names. The setting values on the screen images are shown as examples, so setting values on screen images are not guaranteed for operation.

The description about EXPRESSBUILDER in this document will replace about UtilityCD on some server.

In this document, "¥" expresses back slash.

### ■ About Symbols in This Document

The following explains three symbols that are used in this document:

- IMPORTANT:** Points or particular notes you must follow when handling software of servers.
- CHECK:** Points or notes you need to check when handling software or servers.
- TIPS:** Useful information.

## **Chapter1 Summary**

---

NEC ExpressUpdate Agent is software that works on the server managed by NEC ESMPRO Manager (Ver5.23 or later). It can remotely update software or firmware on the server from NEC ESMPRO Manager (Ver5.23 or later) operations.

## Chapter2 System Requirements

---

Install NEC ExpressUpdate Agent on managed server.

The environment to operate NEC ExpressUpdate Agent is following.

### ■ Hardware

It is necessary that the server is managed by NEC ESMPRO Manager (Ver5.23 or later) and satisfies the following conditions.

#### ● Managed server

NEC Express5800 series and NEC Storage NS series

#### ● Memory

512MB or more

#### ● Availability of hard disk

300MB or more

### ■ Operating system

#### ● Windows

Microsoft Windows Server 2003 Standard Edition/Enterprise Edition (SP1 or later)  
Microsoft Windows Server 2003 R2 Standard Edition/Enterprise Edition  
Microsoft Windows Server 2003 Standard Edition/Enterprise Edition (x64 SP1 or later)  
Microsoft Windows Server 2003 R2 Standard Edition/Enterprise Edition (x64)  
Microsoft Windows Server 2008 Standard/Enterprise/Datacenter/ServerCore  
Microsoft Windows Server 2008 Standard/Enterprise/Datacenter/ServerCore (x64)  
Microsoft Windows Server 2008 R2 Standard/Enterprise/Datacenter/ServerCore (x64)  
Microsoft Windows Server 2012 Standard/Datacenter/ServerCore (x64)  
Microsoft Windows Server 2012 R2 Standard/Datacenter/ServerCore (x64)

Microsoft Windows XP Professional (SP2 or later)  
Microsoft Windows XP Professional (x64 SP2 or later)  
Microsoft Windows Vista Ultimate/Business/Enterprise  
Microsoft Windows Vista Ultimate/Business/Enterprise (x64)  
Microsoft Windows 7 Ultimate/Professional/Enterprise  
Microsoft Windows 7 Ultimate/Professional/Enterprise (x64)  
Microsoft Windows 8 Pro/Enterprise  
Microsoft Windows 8 Pro/Enterprise (x64)  
Microsoft Windows 8.1 Pro/Enterprise  
Microsoft Windows 8.1 Pro/Enterprise (x64)

#### ● Linux

Red Hat Enterprise Linux ES 4 (x86, x64)  
Red Hat Enterprise Linux AS 4 (x86, x64)  
Red Hat Enterprise Linux Advanced Platform 5 (x86, x64)  
Red Hat Enterprise Linux Server 5 (x86, x64)  
Red Hat Enterprise Linux Server 6 (x86, x64)  
Red Hat Enterprise Linux Server 7 (x64)  
Miracle Linux 4.0 – Asianux Inside (x86, x64)  
Asianux Server 3 ==MIRACLE LINUX V5 (x86, x64)  
SUSE Linux Enterprise Server 10 (SP2, SP3)(x86, x64)  
SUSE Linux Enterprise Server 11 (SP2, SP3)(x86, x64)  
Oracle Linux 6 (x64)  
VMware ESX4.1

---

**IMPORTANT:**

- You can not install NEC ExpressUpdate Agent in the following case.
    - Installation on guest OS virtual machine such as Hyper-V.
  - In the Server Core, if Wow6432Node is uninstalled, NEC ExpressUpdate Agent will not be installed normally. Please do not uninstall Wow6432Node, if you install NEC ExpressUpdate Agent.
  - The following packages are necessary to use NEC ExpressUpdate Agent on Red Hat Enterprise Linux Server 6(x64), Red Hat Enterprise Linux Server 7(x64) or Oracle Linux 6(x64). If these are not installed, you need to install them from the install disc of operating system.
    - glibc i686
    - nss-softokn-freebl i686
    - libxml2 i686
    - zlib i686
    - libstdc++ i686
    - libgcc i686
    - xz-libs i686 (In the case of Red Hat Enterprise Linux Server 7)
  - In Linux, if OpenSLP (openslp-server package) has already been installed in your computer, before you install NEC ExpressUpdate Agent, please uninstall this package by the following command.
 

```
rpm -e openslp-server
```
- 

- **Other information**

Following software is installed to operate NEC ExpressUpdate Agent.

- OpenSLP (NEC ExpressUpdate Agent installs it automatically except on SUSE Linux Enterprise Server and VMware ESX4.1 on which OpenSLP is installed by default.)
  - Apache Axis2c
- 

**CHECK:**

- NEC ExpressUpdate Agent may not operate normally, when SLP software except OpenSLP is installed. Please uninstall SLP software except OpenSLP, before installing NEC ExpressUpdate Agent.
  - Except SUSE Linux Enterprise Server and VMware ESX4.1, if OpenSLP has already been installed when NEC ExpressUpdate Agent is installed newly, you can not install NEC ExpressUpdate Agent. Please uninstall OpenSLP and install NEC ExpressUpdate Agent. But if Universal RAID Utility (for Windows Ver2.1 or later, for Linux Ver2.4 or later) has already been installed, you do not need to uninstall OpenSLP.
  - When NEC ExpressUpdate Agent is installed newly on SUSE Linux Enterprise Server and VMware ESX4.1, it will be the following case by the status of default installed OpenSLP.
    - < Default installed OpenSLP is operating >
      - NEC ExpressUpdate Agent uses default installed OpenSLP.
      - Please do not uninstall OpenSLP.
    - < Default installed OpenSLP is stopped >
      - NEC ExpressUpdate Agent starts default installed OpenSLP and uses it.
      - Please do not uninstall OpenSLP.
    - < Default installed OpenSLP is uninstalled >
      - NEC ExpressUpdate Agent installs OpenSLP automatically.
  - If Axis2c has already been installed when NEC ExpressUpdate Agent is installed newly, you cannot install NEC ExpressUpdate Agent. Please uninstall Axis2c and install NEC ExpressUpdate Agent. But if Universal RAID Utility (for Windows Ver2.1 or later, for Linux Ver2.4 or later) has already been installed on Windows, you do not need to uninstall Axis2c.
-



## Chapter3 Installation

---

### 3.1 NEC ExpressUpdate Agent Installation for Windows

Explain the installation of NEC ExpressUpdate Agent.

#### 3.1.1 Check before installation

Check the followings:

- See chapter 2 to check the system requirement.
- Login to Windows as Administrator.

#### 3.1.2 Start installer

##### ■ If you install NEC ExpressUpdate Agent by using downloaded modules:

After unzipping the downloaded modules, please execute the following file. NEC ExpressUpdate Agent installation will be started.

¥eu\_agent¥setup.exe

##### ■ If you install NEC ExpressUpdate Agent by using EXPRESSBUILDER

You can install as follows:

- (1) Insert EXPRESSBUILDER into the DVD drive on the managed server which Windows has started. Autorun Menu will be displayed.

.....  
**TIPS:**

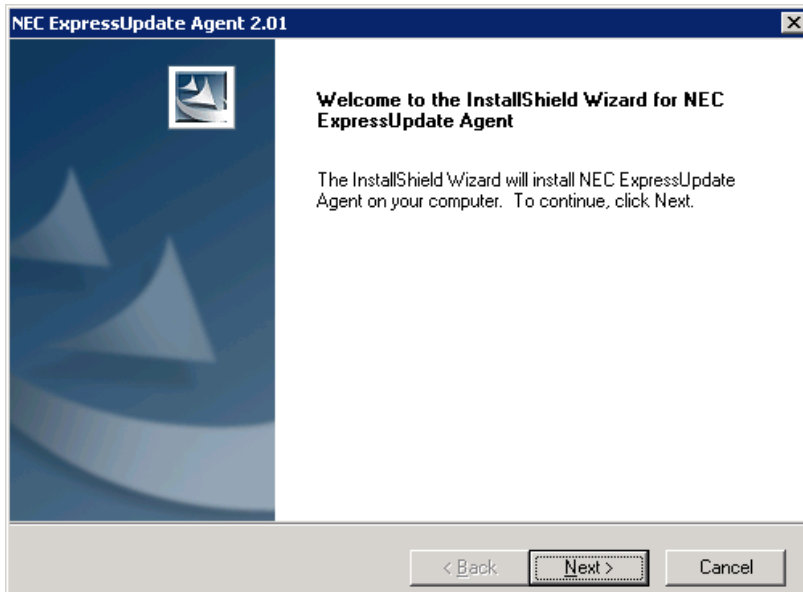
- If Autorun Menu does not launch, double-click ¥autorun¥dispatcher.exe from EXPRESSBUILDER. (x64 Edition : dispatcher\_x64.exe)
  - If the device selection window is displayed, select the device you are using.
- .....

- (2) In any of the following, NEC ExpressUpdate Agent installation will be started.

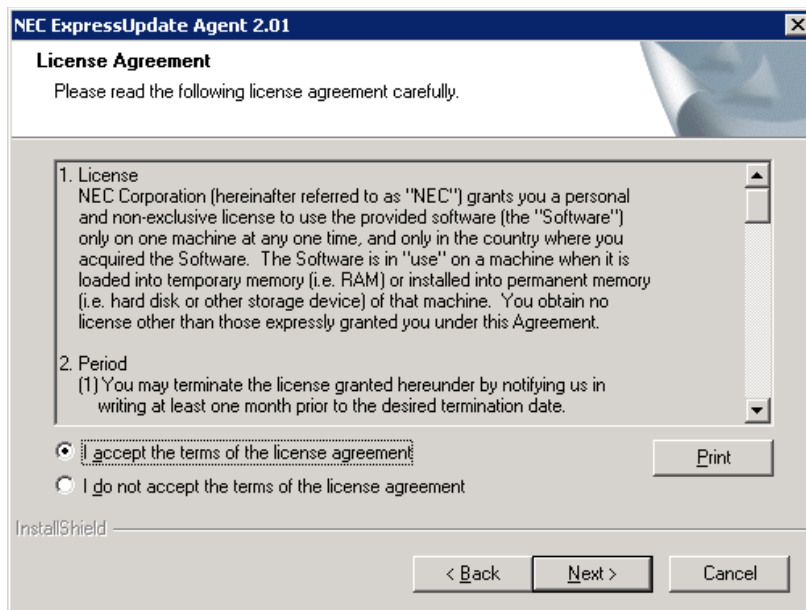
- Click [Applications] - [NEC ExpressUpdate Agent] - [Install].
- Click [Applications] - [ESMPRO] - [Additional Application] - [NEC ExpressUpdate Agent].
- Click [Set up software] - [ESMPRO] - [Additional Application] - [NEC ExpressUpdate Agent].

### 3.1.3 Install NEC ExpressUpdate Agent

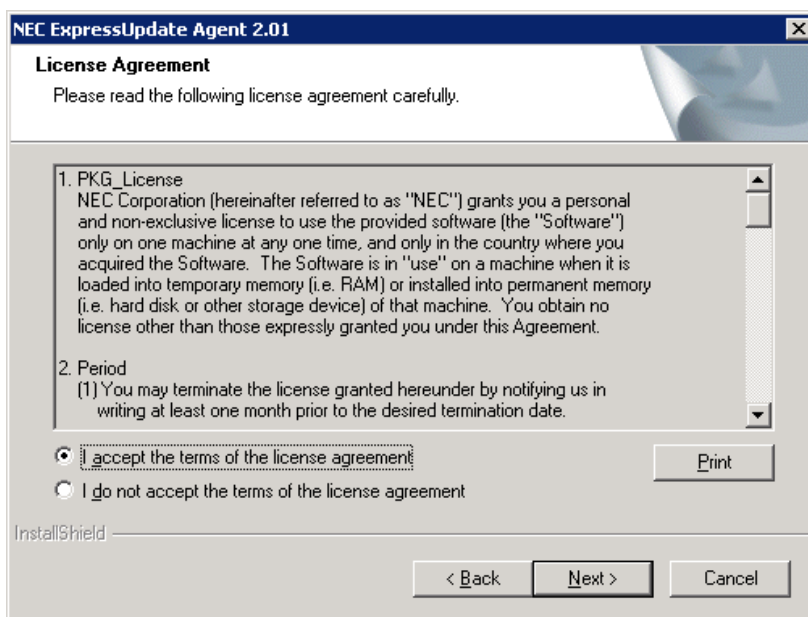
- (1) NEC ExpressUpdate Agent installer will be started. Click [Next].



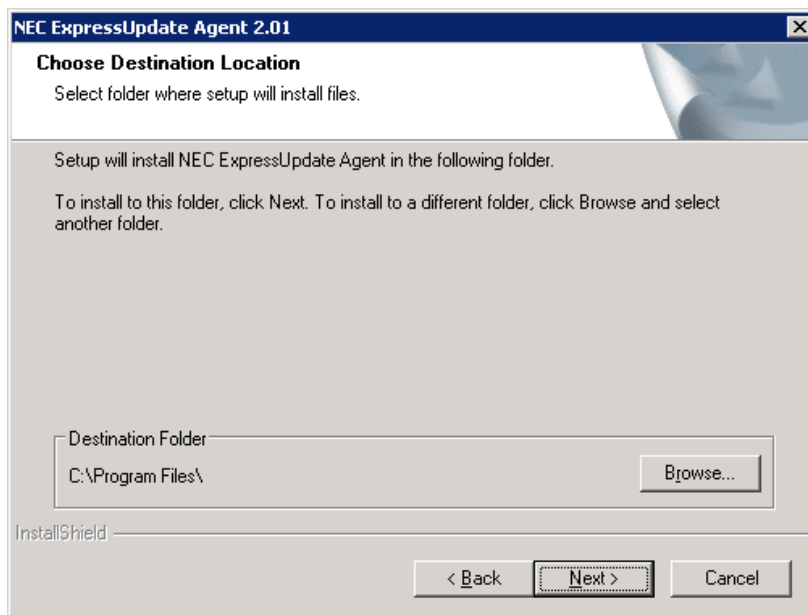
- (2) Carefully read the terms of the license agreement for NEC ExpressUpdate Agent, and select [I accept the terms of the license agreement], click [Next].



- (3) Carefully read the terms of the license agreement for update packages, and select [I accept the terms of the license agreement], click [Next].



- (4) Input the directory to install, click [Next].



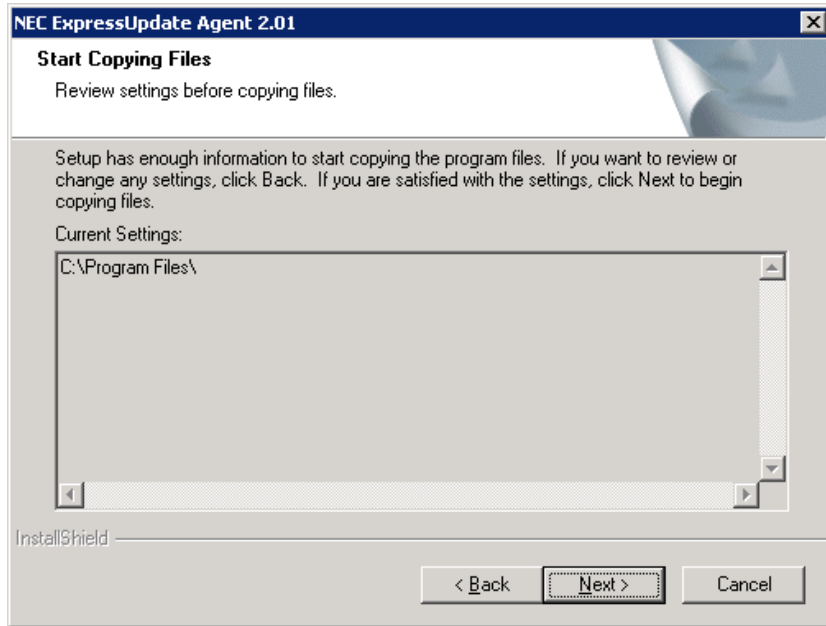
**CHECK:**

- If Universal RAID Utility for Windows Ver2.1 or later has already been installed, the above menu is not displayed. So you cannot select the directory to install.

**TIPS:**

- If the above menu is not displayed, NEC ExpressUpdate Agent is installed to following directory.  
 <system drive>\Program Files\axis2c\bin  
 (x64 Edition : <system drive>\Program Files (x86)\axis2c\bin)

(5) Read the information, and click [Next]. The installation will be started.



---

**IMPORTANT:**

- If the menu which requires rebooting is displayed, please reboot the operating system.

---

**TIPS:**

- After installation of NEC ExpressUpdate Agent, you can check whether the installation is completed normally.  
Click [Administrative Tools] - [Services]. If [eciService] and [NEC ExpressUpdate Agent], [Service Location Protocol] is started status, the installation completed normally.
  - Please refer to 4.1 NEC ExpressUpdate Agent Installation when you install it.
-

## 3.2 NEC ExpressUpdate Agent Uninstallation for Windows

Explain the uninstallation of NEC ExpressUpdate Agent.

### 3.2.1 Check before uninstallation

Check the following:

-- Login to Windows as Administrator.

### 3.2.2 Uninstall NEC ExpressUpdate Agent

Uninstall from the Windows menu [Control Panel] - [Add or Remove Programs]. Select [NEC ExpressUpdate Agent] and click [Change/Remove] button. You can uninstall it by displayed direction.

-----  
**CHECK:**

- If the operating system is Server Core, you can uninstall by executing the installer that is used to install.  
<executing command>  
setup.exe /z "UNINSTALL"
-

### 3.3 NEC ExpressUpdate Agent Installation for Linux

Explain the installation of NEC ExpressUpdate Agent

#### 3.3.1 Check before installation

Check the followings:

- See chapter 2 to check the system requirement.
- Login to Linux as root user.

.....  
**CHECK:**

- NEC ExpressUpdate Agent installer exists on following directory:
  - If you install by using downloaded modules: /eu\_agent.
  - If you install by using EXPRESSBUILDER: <revision folder>/lnx/pp/eu\_agentAs for <revision folder>, confirm the number in the parenthesis of the version displayed on the Autorun Menu.  
For example, if the version is "Version 6.10-020.05 (024)", then <revision folder> is 024.  
.....

When using this software on VMware ESX4.1, open up the outgoing ports as follows.

```
esxcfg-firewall --allowOutgoing
```

#### 3.3.2 Copy and extract NEC ExpressUpdate Agent installer

Copy the NEC ExpressUpdate Agent installer into any directory on the managed server.

The NEC ExpressUpdate Agent installer files are in /eu\_agent.

The following is an example of installation into /usr/local/bin:

- (1) Create /ExpressUpdate directory under /usr/local/bin.

```
mkdir -p /usr/local/bin/ExpressUpdate
```

- (2) Copy eu\_agent directory to /usr/local/bin/ExpressUpdate.

- (3) Move to the directory containing the installer.

```
cd /usr/local/bin/ExpressUpdate/eu_agent
```

- (4) Extract the installer.

-- In the case of tgz format:

```
tar xzvf ExpressUpdateAgent-N.NN-x.tgz
```

"N.NN" in the example file name means the version.

-- In the case of zip format:

```
unzip EXPRESSBUILDER7_XXXXXXXXXXXXXXXXXXXXXXXXX.zip
```

"XXXXX..." in the example file name depends on the module.

.....  
**CHECK:**

- If unzip command is not installed, you need to install it.  
.....

### 3.3.3 Install NEC ExpressUpdate Agent

(1) Move to the directory that the installer was extracted.

-- In the case of tgz format:

```
cd /usr/local/bin/ExpressUpdate/eu_agent/ExpressUpdateAgent-N.NN-x
"N.NN" in the example file name means the version.
```

-- In the case of zip format:

```
cd /usr/local/bin/ExpressUpdate/eu_agent
```

(2) Execute the shell for installation.

```
sh ExpressUpdateAgent-N.NN.sh
"N.NN" in the example file name means the version.
```

(3) A message to confirm whether to install NEC ExpressUpdate Agent is displayed. Input "yes" and "Enter" key. If you input "no", the installation is not executed.

(4) The license agreement is displayed. Carefully read the terms of the license agreement, input "yes" and "Enter" key if you agree the license. If you input "no", the installation is not executed.  
NEC ExpressUpdate Agent is installed under /opt/nec/axis2c directory.

When the installation is completed, the following message is displayed.

"Installation of NEC ExpressUpdate Agent is now completed."

NEC ExpressUpdate Agent is started and available.

-----  
**CHECK:**

- Do not delete the files that are used to install, because you will use them to uninstall.
- 

**TIPS:**

- After installation of NEC ExpressUpdate Agent, you can check whether the installation is completed normally to execute following command.  
ps -ef | grep axis2c

The installation is completed normally, if the following lines are displayed as result of above command execution.

```
/opt/nec/axis2c/bin/eciServiceProgram
/opt/nec/axis2c/bin/axis2_http_server
/opt/nec/axis2c/bin/EUAgent
/opt/nec/axis2c/bin/slpd (except the case of using the default installed OpenSLP on SUSE
Linux Enterprise Server)
```

Please refer to 4.1 NEC ExpressUpdate Agent Installation when you install it.  
-----

## 3.4 NEC ExpressUpdate Agent Uninstallation for Linux

Explain the uninstallation of NEC ExpressUpdate Agent

### 3.4.1 Check before installation

Check the following:

-- Login to Linux as root user.

### 3.4.2 Uninstall NEC ExpressUpdate Agent

(1) Move to the directory in which the files for installation are extracted.

-- In the case of tgz format:

```
cd /usr/local/bin/ExpressUpdate/eu_agent/ExpressUpdateAgent-N.NN-x
```

"N.NN" in the example file name means the version.

-- In the case of tgz format:

```
cd /usr/local/bin/ExpressUpdate/eu_agent
```

(2) Execute the following shell file.

```
sh ExpressUpdateAgent-N.NN.sh
```

"N.NN" in the example file name means the version.

(3) A message to confirm whether to uninstall NEC ExpressUpdate Agent is displayed. Input "delete" and "Enter" key.

When the uninstallation is completed, the following message is displayed.

"Uninstallation of NEC ExpressUpdate Agent is now completed."



## Chapter4 Precautions for Use

---

### 4.1 NEC ExpressUpdate Agent Installation

-- NEC ExpressUpdate Agent installer (Windows and Linux) cannot downgrade to the older version. If you want to use the older version, uninstall the current version and then install older version.

Note: All the registered information will be deleted as the result of uninstalling.

-- NEC ExpressUpdate Agent (Windows) installer may become the following events if you install NEC ExpressUpdate Agent with the installer on the removable media. In this case, copy the installer on the HDD and then install.

-- The installer indicates a message that requests the removable media.

-- The installer indicates a message that failed to install eciService.

-- The service of the name of "eciService" does not exist after the installer finished.

-- If you cannot install NEC ExpressUpdate Agent newly by the message displaying the error of coexistence with existing Axis2c environment, though Axis2c environment is not installed, please execute following.

1. on Windows

Delete the Environment Variable "AXIS2C\_HOME", and then execute installation.

If it is already deleted, reboot operating system, and then execute installation.

2. on Linux

The axis2\_http\_server process may be executing.

Please stop the axis2\_http\_server process, and then execute installation

-- NEC ExpressUpdate Agent (Linux) installer may indicate a message that is as follows:

```
libsemanage.semanage_link_sandbox: Could not access sandbox base file /etc/selinux/targeted/modules/tmp/base.pp.  
/usr/sbin/semanage: Could not add file context for /opt/nec/axis2c/xxxxx/xxxxx
```

In this case, please set SELinux again as follows when you will update the policy of SELinux.

(1) Set security.

```
semanage fcontext -a -t textrel_shlib_t /opt/nec/axis2c/services/eciService/libeciService.so  
semanage fcontext -a -t textrel_shlib_t /opt/nec/axis2c/services/eciServicePlain/libeciServicePlain.so  
semanage fcontext -a -t textrel_shlib_t /opt/nec/axis2c/lib/libpweb.so.0.0.0  
chcon -f -t textrel_shlib_t /opt/nec/axis2c/services/eciService/libeciService.so  
chcon -f -t textrel_shlib_t /opt/nec/axis2c/services/eciServicePlain/libeciServicePlain.so  
chcon -f -t textrel_shlib_t /opt/nec/axis2c/lib/libpweb.so.0.0.0
```

(2) Restart NEC ExpressUpdate Agent.

```
cd /opt/nec/axis2c/bin  
./eciServiceReStart.sh
```

## 4.2 The change of the IP address of Operating System

- If the IP address of operating system on the managed server is changed, NEC ExpressUpdate Agent restarts automatically to recognize changed IP address and update the latest status.
- The number of IP address that can be set on the managed server is up to 42. If you set the IP address of 43 or more, you can not communicate with this software and NEC ESMPRO Manager.

## 4.3 Windows Firewall

NEC ExpressUpdate Agent registers following programs automatically in exception program of firewall on the managed server when the installation is executed.

- axis2\_http\_server
- slpd

## 4.4 Linux Firewall

NEC ExpressUpdate Agent adds a temporary setting for the iptables as sets port numbers to firewall when it starts up. If you want to suppress the setting of the iptables, you will not be able to use this software. In this case, please uninstall this software, or stop and disable as follows.

```
cd /opt/nec/axis2c/bin
./eua_stop.sh
./eci_stop.sh
chkconfig ExpressUpdateAgent off
chkconfig eciServiceProgram off
```

If you change the firewall setting from disable to enable or configure the setting by Security Level Configuration screen after NEC ExpressUpdate Agent starting up, the firewall setting of NEC ExpressUpdate Agent will be lost. In this case, please execute the following process to reset the firewall setting of NEC ExpressUpdate Agent.

```
cd /opt/nec/axis2c/bin
./eci_setport.sh
```

## 4.5 The Server Management Driver on the managed server

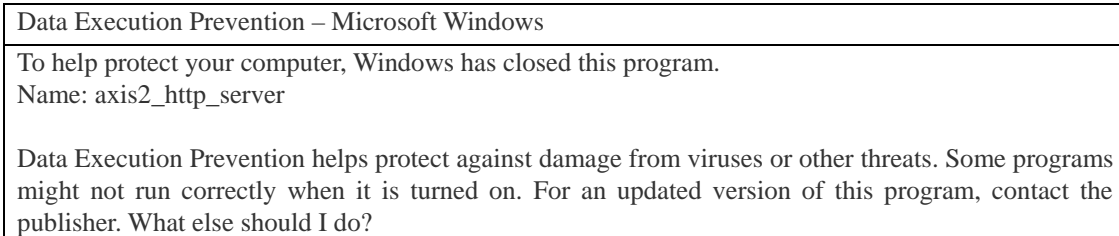
Though EXPRESSSCOPE Engine series is integrated in the managed server, the current version of BMC firmware is displayed "unknown". It is thought that the Server Management Driver will not be installed in the managed server. In this case the installation of BMC firmware update package cannot be executed. Please install the Server Management Driver as follows.

1. on Windows  
Execute system update by the menu of EXPRESSBUILDER.
2. on Linux  
From the following web site, download the Server Management Driver which supports the managed server and kernel version, and install it.

<http://www.nec.com/express/>

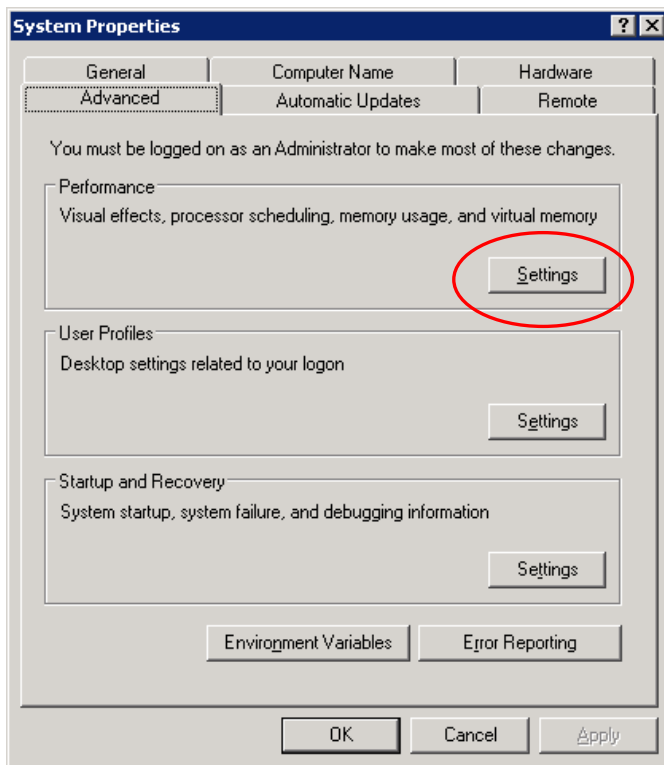
## 4.6 Windows Data Execution Prevention (DEP) function

You may receive an error message that is similar to the following during NEC ExpressUpdate Agent processing because of Windows Data Execution Prevention (DEP).

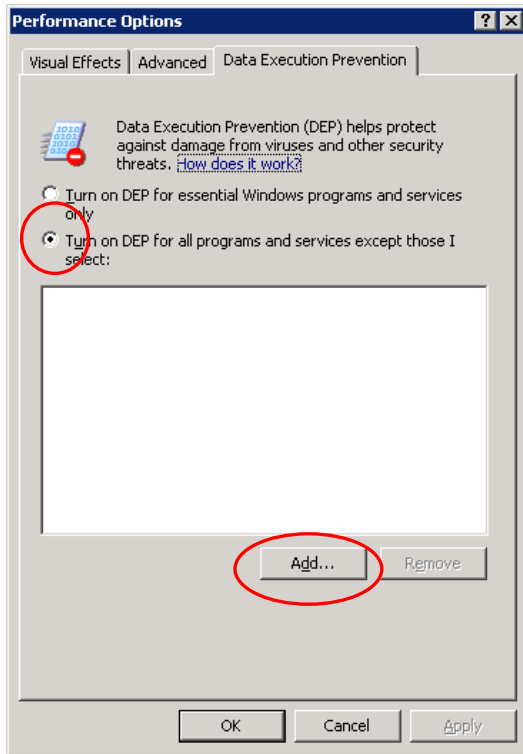


In this case, execute following procedure on the managed server, and set the program disable on DEP.

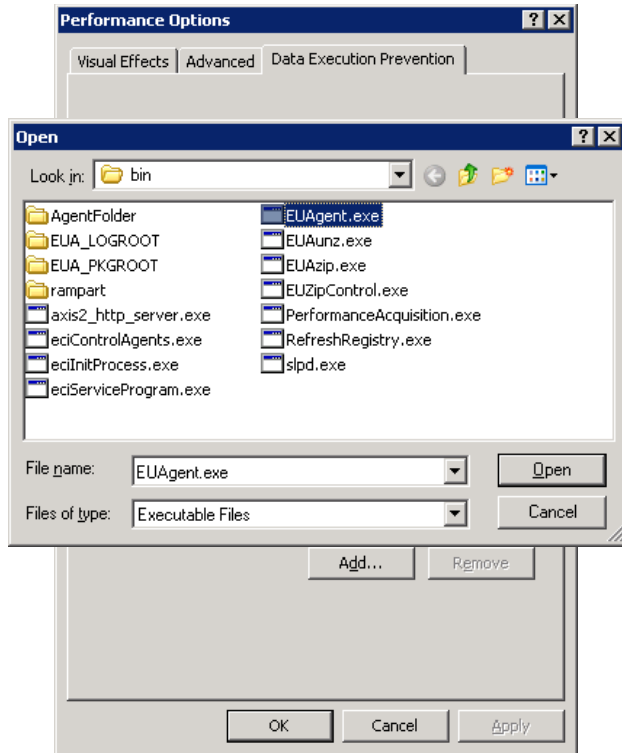
- (1) Right click "My Computer" of Windows, and click "Properties".
- (2) Click "Setting" of "Performance" in "Advanced" tab of System Properties.



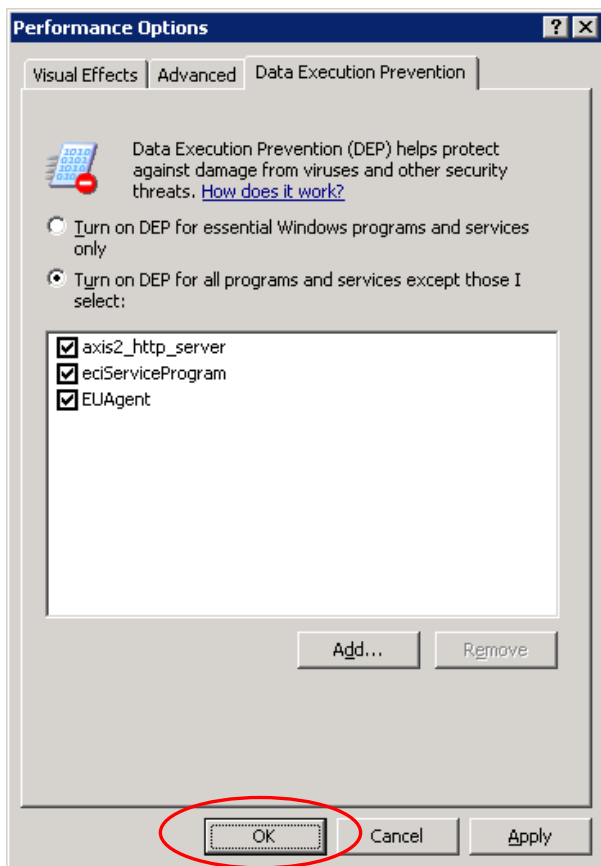
- (3) Select "Turn on DEP for all programs and services except those I select:" in "Data Execution Prevention" tab of Performance Options, and click "Add" button.



- (4) From the opened dialog, move to the directory in which NEC ExpressUpdate Agent is installed, and select "EUAgent.exe", click "Open" button. Operate same way to "eciServiceProgram" and "axis2\_http\_server".



- (5) Confirm the screen like following, and click "OK" button.



- (6) If the reboot of operating system is required, please reboot operating system.

### 4.7 Without Windows Print Spooler service

NEC ExpressUpdate Agent Ver.3.10 or earlier, if Print Spooler service is stopped, eciService service will also be stopped. If you do not use Print Spooler service, please restart eciService service as follows.  
NEC ExpressUpdate Agent Ver.3.11 or later, there is no dependency on Print Spooler service.

- (1) If Print Spooler service has been stopped, start Print Spooler services first, and then start eciService service.
- (2) Set "Properties" - "General" - "Startup type" of Print Spooler service to "Manual" or "Disabled" on condition Print Spooler service is running state.
- (3) Stop Print Spooler service.
- (4) Start eciService service.

## Revision History

2.11	2009/11/26	Initial edition
2.12	2010/02/17	Adds External Libraries. Corrects Operating System of System Requirements. Modifies NEC ExpressUpdate Agent Installation for Windows. Modifies copyright. Corrects writing errors.
2.20	2010/02/23	Corrects writing errors.
2.21	2010/04/02	Corrects font.
2.30	2010/07/21	Modifies About Installation.
2.31	2010/08/26	Corrects font.
3.00	2011/04/13	Modifies Operating System of System Requirements. Modifies NEC ExpressUpdate Agent Installation for Linux. Modifies Precautions for Use. Corrects writing errors.
3.01	2011/04/27	Modifies title. Corrects writing errors.
3.02	2011/06/24	Adds required packages by Red Hat Enterprise Linux Server 6 (x64). Changes cover.
3.03	2012/02/27	Corrects writing errors.
3.04	2012/05/25	Modifies Precautions for Use. Modifies Installation. Corrects writing errors.
3.05	2012/09/14	Modifies Operating System of System Requirements. Modifies Precautions for Use. Corrects writing errors.
3.06	2012/11/21	Modifies Operating System of System Requirements. Modifies Precautions for Use. Corrects writing errors.
3.07	2013/12/20	Modifies Operating System of System Requirements. Corrects writing errors.
3.08	2014/01/07	Modifies Operating System of System Requirements. Corrects writing errors.
3.09	2014/08/19	Modifies Installation. Modifies Precautions for Use. Changes cover. Corrects writing errors.
3.10	2014/12/01	Modifies Operating System of System Requirements.
3.11	2014/12/12	Modifies Installation and Uninstallation for Linux.

