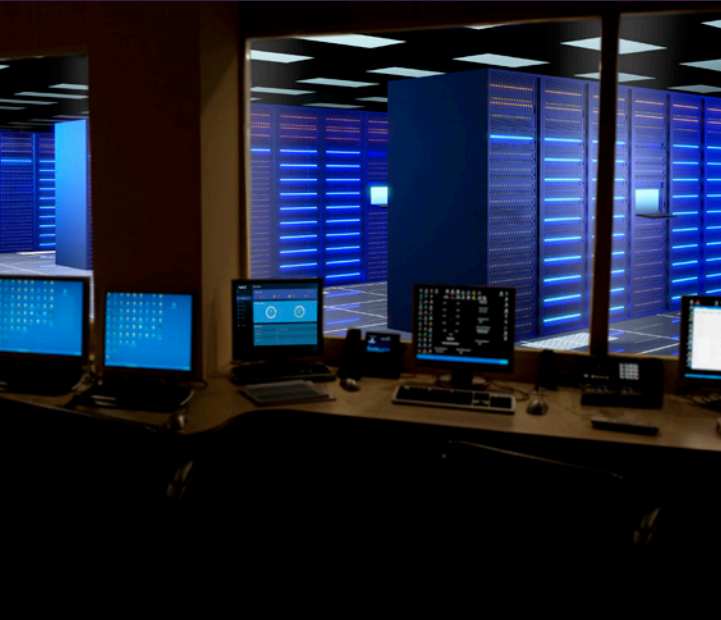


# QX-S5100 Series non-PoE Gigabit Ethernet Switches



## At a Glance

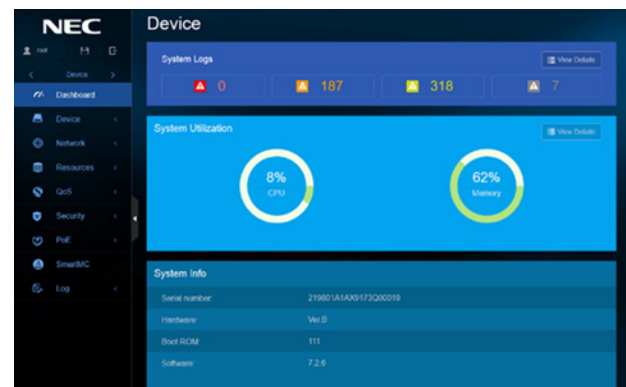
- Versatile switches that can be utilized in both traditional and SDN network environments as edge devices or standalone
- Supports NEC's Network Operation Engine that provides network automation and virtualization managed through an easy-to-use management interface. It simplifies day to day network management with drag-and-drop network configuration and high-availability resulting in a secure, flexible and centrally configurable Enterprise Campus Network.
- Can be managed by the NOE Controller, WebGUI management console or Command Line Interface (CLI)

## Overview

These versatile switches can be used as edge devices in a traditional or Software Defined Network (SDN) network. The QX-S5200 series fully supports NEC's Network Operation Engine (NOE).

### Main Product Features

- 24 and 48 10/100/1000 Ethernet Ports
- 4 Gigabit SFP Uplink ports
- Support for L2 and L3 forwarding, QoS, Security, Multicast, & VLAN
- Support Static and RIP policy-based Routing functions
- CLI and WebGUI management console
- SDN compatible (NOE).
- High Speed stack connection function (Intelligent Resilient Framework)



QX-S5100 Series WebGUI

# Specifications

Features		S5124GT-4X	S5148GT-4X	
Performance	Switching capacity [bps]	128.0G	176.0G	
	Transfer rate [pps]	95.2M	130.9M	
	Switching method		S&F	
	MAC address table		16K	
	Routing table (IPv4/IPv6)		512/256	
Interface	ARP table		1K	
	10Gbe	SFP slot	-	-
		SFP+ slot	4	4
	40Gbe	QSFP+ slot	-	-
	Console Port	√	√	
PoE+	Number of power feedable interfaces	--	--	
	Power feeding standard		---	
	Maximum power supply amount per port		---	
	Maximum power supply amount per device		---	
IRF	IRF stack version		IRFv2	
	Maximum number of IRF stacks		6	
	MAD/ISSU		√/-	
VLAN	IEEE802.1Q		√	
	Port VLAN		√	
	Protocol VLAN		√	
	Voice VLAN		√	
	Max. number of VLAN <i>[number of settable IP addresses]</i>		4094[32]	
	VLAN mapping		√	
	QinQ		√	
Port function	Auto Negotiation/fixed speed and duplex (full/half)		√/√	
	Auto MDI • MDIX/ fixed MDIX		√/√	
	Flow control (IEEE802.3X)		√	
	EAP transmitted/BPDU transmitted		√/√	
	Port isolate		√	
	Packet transfer suppression		B/M/U	
	Storm-constrain		B/M/U	
	Jumbo Frame (byte)		10000	
	Loop detection (multi port loop supported)		√	
	One-way link detection DLDP)		√	
	Ethernet OAM (IEEE802.3ah)		√	
	Link aggregation (LACP supported)		√	
Spanning tree		S/R/M/P		
Ring protocol (RRPP)		√		
Packet filter (ACL)		√		
IPv6 management		√		
QoS	PQ		√	
	WRR		√	
	Bandwidth control		LR/CAR/GTS	
	Trust/Marking		√/√	
	Number of QoS classes		8	

√ = Available  
 - = Not Available

## Specifications (cont.)

Features		S5124GT-4X	S5148GT-4X
<b>Security</b>	802.1X authentication		√
	MAC address authentication		√
	Web authentication		√
	Triple authentication		√
	Port security		√
	Dynamic VLAN		PORT/MAC
<b>Routing related</b>	Local authentication		√
	Static		√
	RIP, OSPF		√
	Policy-Based Routing		√
	VRRP		√
	BFD		√
<b>Multicasting</b>	Multicast VLAN		√
	IGMPv1/v2/v3 snooping		√
	MLDv1/v2 snooping		√
<b>SDN Ready</b>	SDN supported	Network Operation Engine (NOE)	
	Maximum flow entry		500
<b>Management function</b>	telnet/ssh/WEB console		√ / √ / √
	FTP • TFTP client/FTP server		√ / √
	LLDP		√
	DHCP		C/R/SV/SN
	NTP client/NTP server		√ / -
	Syslog		√
	Log file		√
	SNMPv1/v2c/v3		√
	Standard MIB, Private MIB		√
	RMON		√
	sFlow		√
	Port mirroring		√
	<b>Eco function</b>	Scheduled task	
IEEE802.3az			√
<b>Physical specification</b>	External dimension (W x D x H) [mm]	440 x 160 x 43.6	440 x 230 x 43.6
	Weight	2.5kg	3.5kg
	AC power input (50/60Hz)	100~240V (90~264V)	
	Maximum power consumption (PoE fed power included)	24W	44W
	Fanless	-	-
	Operating temperature/humidity (non-condensing req.)	0~45°/10~90%	
<b>VCCI ClassA / RoHS support</b>		√ / √	

√ = Available  
- = Not Available

## S5124GT-4X



## S5148GT-4X



For further information please contact your local NEC representative or:

**North America (USA)**  
NEC Corporation of America  
[www.necam.com](http://www.necam.com)

**South Asia (Singapore)**  
NEC Asia Pacific  
[www.nec.com.sg](http://www.nec.com.sg)

**Corporate Headquarters  
(Japan) NEC Corporation**  
[www.nec.com](http://www.nec.com)

**Oceania (Australia)**  
NEC Australia Pte Ltd  
[www.nec.com.au](http://www.nec.com.au)

**EMEA (Europe, Middle East, Africa)**  
NEC Enterprise Solutions  
[www.nec-enterprise.com](http://www.nec-enterprise.com)

**About NEC Corporation:** NEC Corporation is one of the world's leading providers of Internet, broadband network and enterprise business solutions dedicated to meeting the specialized needs of its diverse and global base of customers. NEC delivers tailored solutions in the key fields of computer, networking and electron devices, by integrating its technical strengths in IT and Networks. The NEC Group employs more than 150,000 people worldwide. For additional information, please visit the NEC home page at: <http://www.nec.com>

© 2021 NEC Corporation. NEC is a registered trademark of NEC Corporation. All rights reserved. Other product or service marks mentioned are the trademarks of their respective owners. Models may vary for each country. Due to continuous improvements this specification is subject to change without notice.