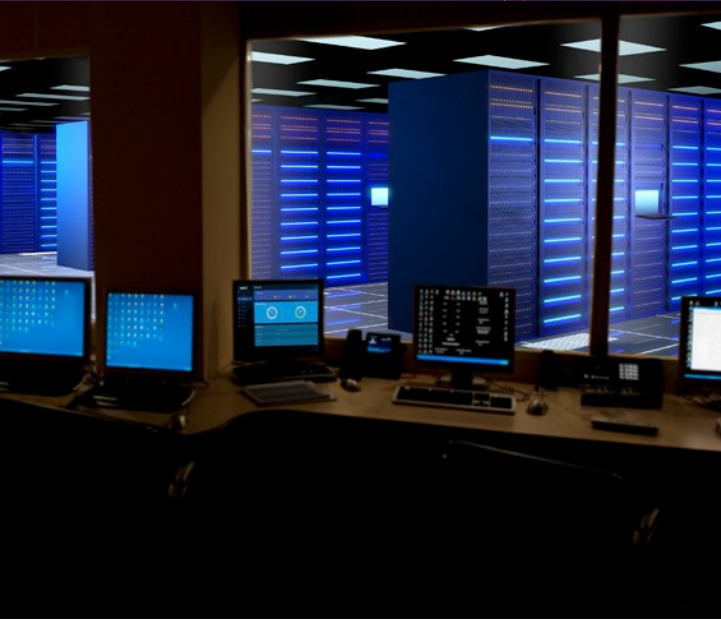


QX-S4800 Series 10 Gigabit Ethernet Switches



At a Glance

- Versatile 1/2.5/5/10 Gbps L3 switches that can be utilized in both traditional and SDN network environments as edge or aggregation devices or standalone
- Supports NEC's Network Operation Engine that provides network automation and virtualization managed through an easy-to-use management interface. It simplifies day to day network management with drag-and-drop network configuration and high-availability resulting in a secure, flexible and centrally configurable Enterprise Campus Network.
- Can be managed by the NOE Controller, management console or Command Line Interface (CLI)

Overview

NEC's QX-S4800 Series 1/2.5/5/10 Gbps L3 switches offer businesses the flexibility to easily deploy PoE devices wherever needed.

Main Product Features

- 8/14/24 1/2.5/5/10 Ethernet Ports
- 2 10 Gigabit SFP+ Uplink ports (on 8 and 14 ports models)
- Support for L2 and L3 forwarding, QoS, Security, Multicast, & VLAN
- Support static, policy-based and RIP/OSPF/BGP Routing functions
- CLI and WebGUI management console
- SDN compatible (Network Operation Engine)
- High Speed stack connection function (Intelligent Resilient Framework)
- The 24 ports model requires:
 - Power modules: PSR360-56A (2 slots available, one or two power modules can be installed) - Must be ordered separately
 - Fan trays: LSPM5FANSB (2 slots available, two power modules are required) - Must be ordered separately

Specifications

Features		S4808XT-2X	S4814XT-2X	S4824XT-1C
Performance	Switching capacity [bps]	200.0G	320.0G	640.0G
	Transfer rate [pps]	148.8M	238.0M	239.5M
	Switching method	S&F		
	MAC address table	32K/16K (shared with the ARP table)		
	Routing table (IPv4/IPv6)	16K/8K		
	ARP table	7.5K/16K (shared with the MAC table)		
Interface	1/2.5/5/10 BASE-T	8	14	24
	SFP+ slot	2	2	-
	Console Port / Management Port	√	√	√
IRF	IRF stack version	IRFv2		
	Maximum number of IRF stacks	9		
	MAD/ISSU	√ / √		
VLAN	IEEE802.1Q	√		
	VLAN Type	PORT/PROT/IPSub		
	Private VLAN	√		
	Voice VLAN	√		
	Maximum number of VLAN [number of settable IP addresses]	4094[1024]		
	VLAN mapping	√		
Port function	QinQ	√		
	Auto Negotiation/ fixed speed and duplex (full/half)	√ / √		
	Auto MDI • MDIX/ fixed MDIX	√ / √		
	Flow control (IEEE802.3X)	√		
	EAP transmitted/BPDU transmitted	√ / √		
	Port isolate	√		
	Packet transfer suppression	B/M/U		
	Storm-constrain	B/M/U		
	Jumbo Frame (byte)	10000		
	Loop detection (multi port loop supported)	√		
	One-way link detection (DLDP)	√		
	Ethernet OAM (IEEE802.3ah)	√		
	CFD (IEEE802.1ag)	√		
Link aggregation (LACP supported)	√			
Spanning tree	S/R/M/P			
Ring protocol (RRPP)	√			
Packet filter (ACL)	√			
IPv6 management	√			
QoS	SPQ / WRR / WFQ / WRED	√ / √ / - / -		
	Bandwidth limitation (* 10)	LR/CAR/GTS		
	Trust / marking	√ / √		
	Number of QoS classes	8		
Security	Corresponding authentication method	.1X/MAC/WEB/LOC		
	Port security	√		
	Dynamic VLAN	PORT/MAC		

√ = Available
 - = Not Available

Specifications (cont.)

Features		S4808XT-2X	S4814XT-2X	S4824XT-1C
Routing	Static / PBR		√ / √	
	RIP		V1 / v2 / ng	
	OSPF		V2 / v3	
	BGP		4 / 4+	
	VRRP		√	
	BFD		√	
	VRF-Lite (MCE)		√	
Multicasting	Multicast VLAN		√	
	IGMPv1 / v2 / v3 snooping		√	
	MLD v1 / v2 snooping		√	
	IGMPv1 / v2 / v3		√	
	MLDv1 / v2		√	
	PIM-SM / PIM-SSM		√ / √	
Tunneling		GRE tunnel: IPv4 over IPv4, IPv4 over IPv6, IPv6 over IPv4, IPv6 over IPv6		
SDN	Controller	Network Operation Engine (NOE)		
Management function	telnet/ssh/WEB console		√ / √ / -	
	FTP • TFTP client/FTP server		√ / √	
	LLDP		√	
	DHCP		C/R/SV/SN	
	NTP client/NTP server		√ / √	
	Syslog		√	
	Log file		√	
	SNMPv1/v2c/v3		√	
	Standard MIB, Private MIB		√	
	RMON		√	
	sFlow		√	
	Port mirroring		√	
	Eco function	Scheduled task		√
EEE (IEEE802.3az)			√	
External dimension (W x D x H) [mm]		440 x 260 x 43.6		440 x 460 x 43.6
Weight	3.6 kg	3.7 kg	5.3 kg	
	AC power input (50/60Hz)		100~240V (90~264V)	
Physical specification	Maximum power consumption	44 W	60 W	120 W
	Operating temperature/humidity (non-condensing required)		0~45°C/10~90%	

√ = Available
 - = Not Available

S4808XT-2X



S4814XT-2X



S4824XT-1C



Corporate Headquarters (Japan)
NEC Corporation
nec.com

North America (USA & Canada)
NEC Corporation of America
necam.com

NEC Enterprise Solutions
NEC Europe Ltd
nec-enterprise.com

APAC
NEC Asia Pacific Pte Ltd
sg.nec.com

Latin America
NEC Latin America
lasc.necam.com

About NEC Corporation of America: Headquartered in Irving, Texas, NEC Corporation of America is a leading technology integrator providing solutions that improve the way people work and communicate. NEC delivers integrated Solutions for Society that are aligned with our customers' priorities to create new value for people, businesses and society, with a special focus on safety, security and efficiency. We deliver one of the industry's strongest and most innovative portfolios of communications, analytics, security, biometrics and technology solutions that unleash customers' productivity potential. Through these solutions, NEC combines its best-in-class solutions and technology, and leverages a robust partner ecosystem to solve today's most complex business problems. NEC Corporation of America is a wholly-owned subsidiary of NEC Corporation, a global technology leader with a presence in 160 countries and \$28 billion in revenues. For more information, visit necam.com.

NEC Corporation of America

© 2021 NEC Corporation of America. NEC is a registered trademark of NEC Corporation. All rights reserved.
Other product or service marks mentioned are the trademarks of their respective owners.