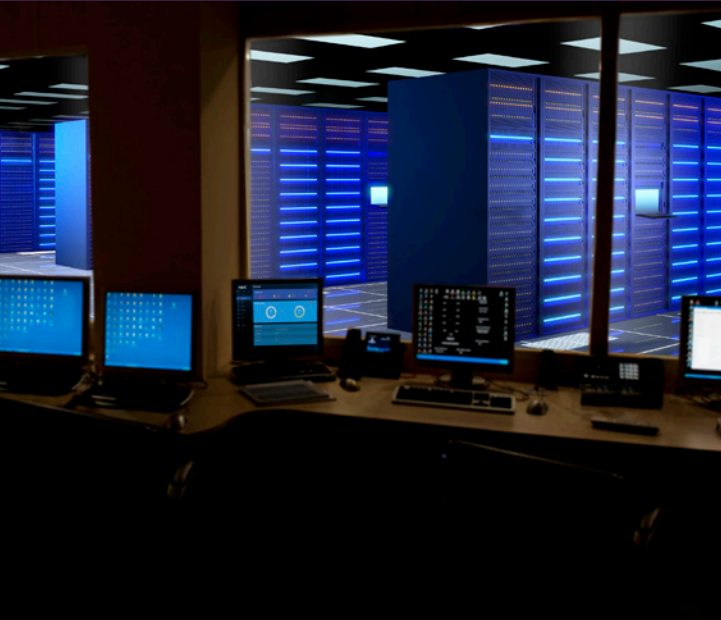


# QX-S1000 Series non-PoE Gigabit Ethernet Switches



## At a Glance

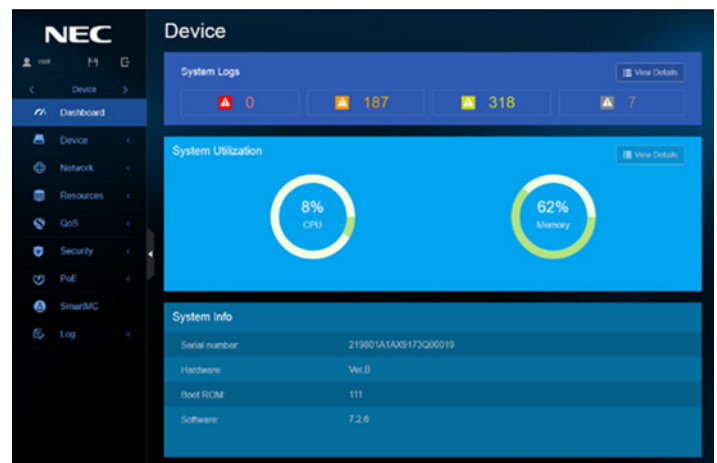
- Versatile Ethernet switches that can be utilized in SDN (OpenFlow) network environments as edge devices or standalone
- Used to complement the QX-S1000 PoE switches in applications where the PoE feature is not required
- Supports NEC's ProgrammableFlow Controller Edge Automation capability which:
  - ◆ Extends some of the SDN functions to non-OpenFlow switches
  - ◆ Simplifies configuration and management of switch
- Can be managed by the SDN Controller, WebGUI management console or Command Line Interface (CLI)

## Overview

NEC's QX-S1000 Series switches can be used as edge devices in a Software Defined Network (SDN) or they can be standalone. The QX-S1000 series fully supports NEC's ProgrammableFlow Controller (PFC) Edge Switch Automation capability, and can be configured and managed directly through the PFC's Graphical User Interface (GUI).

### Main Product Features

- 8, 16, 24 and 48 10/100/1000 Ethernet Ports
- 2 or 4 Gigabit SFP Uplink ports
- Support for L2 and L3 forwarding, QoS, Security, Multicast, & VLAN
- CLI and WebGUI management console



QX-S1000 Series WebGUI

# Specifications

Features		S1008GT-2G	S1016GT-4G	S1024GT-4G	S1048GT-4G	
<b>Performance</b>	Switching capacity [bps]	20.0G	40.0G	56.0G	104.0G	
	Transfer rate [pps]	14.8M	29.7M	41.6M	77.3M	
	Switching method	S&F				
	MAC address table	8K		16K		
	Routing table (IPv4/IPv6)	-				
	ARP table	32				
<b>Interface</b>	1Gbe	10/100-1000BASE-T	8	16	28	48
		SFP slot	2	4	4	4
	Console Port		√	√	√	√
<b>PoE+</b>	Number of power feedable interfaces	-	-	-	-	
	Power feeding standard	-				
	Maximum power supply amount per port	-				
	Maximum power supply amount per device	-				
<b>IRF</b>	IRF stack version	-				
	Maximum number of IRF stacks	-				
	MAD/ISSU	-				
<b>VLAN</b>	IEEE802.1Q			√		
	Port VLAN			√		
	Protocol VLAN			-		
	Voice VLAN			√		
	Maximum number of VLAN			4094		
	VLAN mapping			-		
	QinQ			-		
<b>Port function</b>	Auto Negotiation/ fixed speed and duplex (full/half)			√ / √		
	Auto MDI • MDIX/ fixed MDIX			√ / √		
	Flow control (IEEE802.3X)			√		
	EAP transmitted/BPDU transmitted			√ / √		
	Port isolate			√		
	Packet transfer suppression			B/M/U		
	Storm-constrain			-		
	Jumbo Frame (byte)			9600		
	Loop detection (multi port loop supported)			√		
	One-way link detection (DLDP)			√		
	Ethernet OAM (IEEE802.3ah)			-		
	Link aggregation (LACP supported)			√		
<b>Spanning tree</b>			S/R/M			
<b>Ring protocol (RRPP)</b>			-			
<b>Packet filter (ACL)</b>			√			
<b>IPv6 management</b>			-			
<b>QoS</b>	PQ			√		
	WRR			√		
	Bandwidth control			LR		
	Trust/Marking			√		
	Number of QoS classes			8		

√ = Available  
 - = Not Available

## Specifications (cont.)

Features		S1008GT-2G	S1016GT-4G	S1024GT-4G	S1048GT-4G
<b>Security</b>	802.1X authentication			√	
	MAC address authentication			√	
	Web authentication			-	
	Triple authentication			-	
	Port security			√	
	Dynamic VLAN			PORT/MAC	
	Local authentication			√	
<b>Routing related</b>	Static			-	
	BFD			-	
<b>Multicasting</b>	Multicast VLAN			-	
	IGMPv1/v2/v3 snooping			√	
	MLDv1/v2 snooping			-	
<b>SDN Ready</b>	SDN supported			Edge Automation	
	Maximum flow entry		8K		16K
	telnet/ssh/WEB console			√ / √ / √	
	FTP • TFTP client/FTP server			√ / √	
<b>Management function</b>	LLDP			√	
	DHCP			C/SV	
	NTP client/NTP server			√ / -	
	Syslog			√	
	Log file			-	
	SNMPv1/v2c/v3			√	
	Standard MIB, Private MIB			√	
	RMON			√	
	sFlow			-	
	Port mirroring			√	
	<b>Eco function</b>	Scheduled task			-
<b>Physical specification</b>	External dimension (W x D x H) [mm]	266 x 161 x 43.6	440 x 169 x 43.6		440 x 238 x 43.6
	Weight	1.0kg	2.1kg	2.2kg	3.5kg
	AC power input (50/60Hz)	100~240V (90~264V)			
	Maximum power consumption (PoE fed power included)	12W	20W	28W	47W
	Fanless		√		-
	Operating temperature/humidity (non-condensing required)	0~50°/10~90%			

√ = Available  
 - = Not Available

**S1008GT-2G**



**S1016GT-4G**



**S1024GT-4G**



**S1048GT-4G**



**Corporate Headquarters (Japan)**  
 NEC Corporation  
[nec.com](http://nec.com)

**North America (USA & Canada)**  
 NEC Corporation of America  
[necam.com](http://necam.com)

**EMEA (Europe, Middle East, Africa)**  
 NEC Enterprise Solutions  
[nec-enterprise.com](http://nec-enterprise.com)

**APAC**  
 NEC Asia Pacific Pte Ltd  
[sg.nec.com](http://sg.nec.com)

**Latin America**  
 NEC Latin America  
[latam.necam.com](http://latam.necam.com)

**About NEC Corporation of America:** Headquartered in Irving, Texas, NEC Corporation of America is a leading technology integrator providing solutions that improve the way people work and communicate. NEC delivers integrated Solutions for Society that are aligned with our customers' priorities to create new value for people, businesses and society, with a special focus on safety, security and efficiency. We deliver one of the industry's strongest and most innovative portfolios of communications, analytics, security, biometrics and technology solutions that unleash customers' productivity potential. Through these solutions, NEC combines its best-in-class solutions and technology, and leverages a robust partner ecosystem to solve today's most complex business problems. NEC Corporation of America is a wholly-owned subsidiary of NEC Corporation, a global technology leader with a presence in 160 countries and \$25.2 billion in revenues. For more information, visit [necam.com](http://necam.com).