

Wireless LAN Mobile Handsets



At a Glance

- Keeps employees connected while on the go
- Increases employee efficiency and productivity
- Offers enterprise-grade wireless telephony
- Reduces costs through simplified management
- Integrates with third-party applications

Overview

Mobile handsets can be a huge asset to employees on the go, but if the handsets do not offer full access to all the features and functionality of a desktop phone plus more, it can hinder productivity.

With NEC's Wireless LAN (WLAN) Mobile Handsets and their seamless integration with NEC's UNIVERGE IP communications systems,

employees have full access to the features they require. These mobile handsets significantly improve a user's productivity and responsiveness by providing them with the ability to roam from one business area to another and always being accessible to customers and colleagues.

Solution

Taking Wi-Fi to a New Level

NEC's WLAN Mobile Handsets extend NEC's tradition of offering the industry's highest performing handsets for the Enterprise. These stylish handsets combine an easy-to-use, lightweight design with enhanced durability for employees constantly on the move. Whether deployed as a personal handset or a shared device across multiple shifts, these mobile handsets are the right choice for enterprise-grade wireless telephony.

Personalization options include selectable ringing profiles, personal directory, redial list and a speed-dial list to keep frequently dialed numbers readily available. For shared-use environments, multiple charging and battery options make these mobile handsets ideal for 24-hour operation.

A No Compromise Solution

Having a high-quality voice application is not just a basic requirement – it's mission-critical. NEC's WLAN Mobile handsets deliver a no-compromise voice quality solution, sharing the network bandwidth with the enterprise's data applications, but managing the bandwidth so that calls get the voice quality they require no matter what other demands are placed on the network. It manages the bandwidth to ensure voice quality is always prioritized to be the best available.

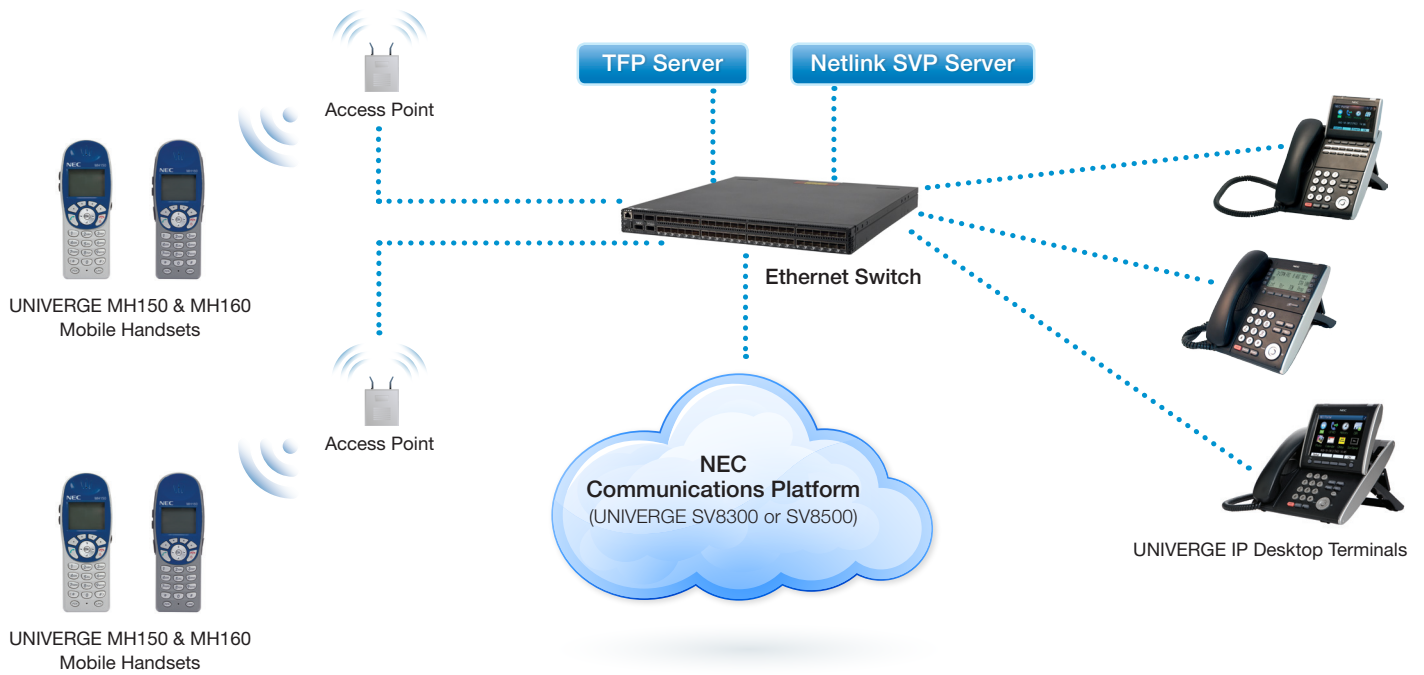
Secure, Reliable Wireless You Can Trust

These handsets are easy to set up and use, and they are so durable that they are resistant to dust, shock and liquid damage. Combined with WLAN Voice Gateways with self-healing firmware, NEC's WLAN Mobile Handsets offer the best in security measures, including WEP, WPA and WPA2 protocols as well as Quality of Service (QoS).

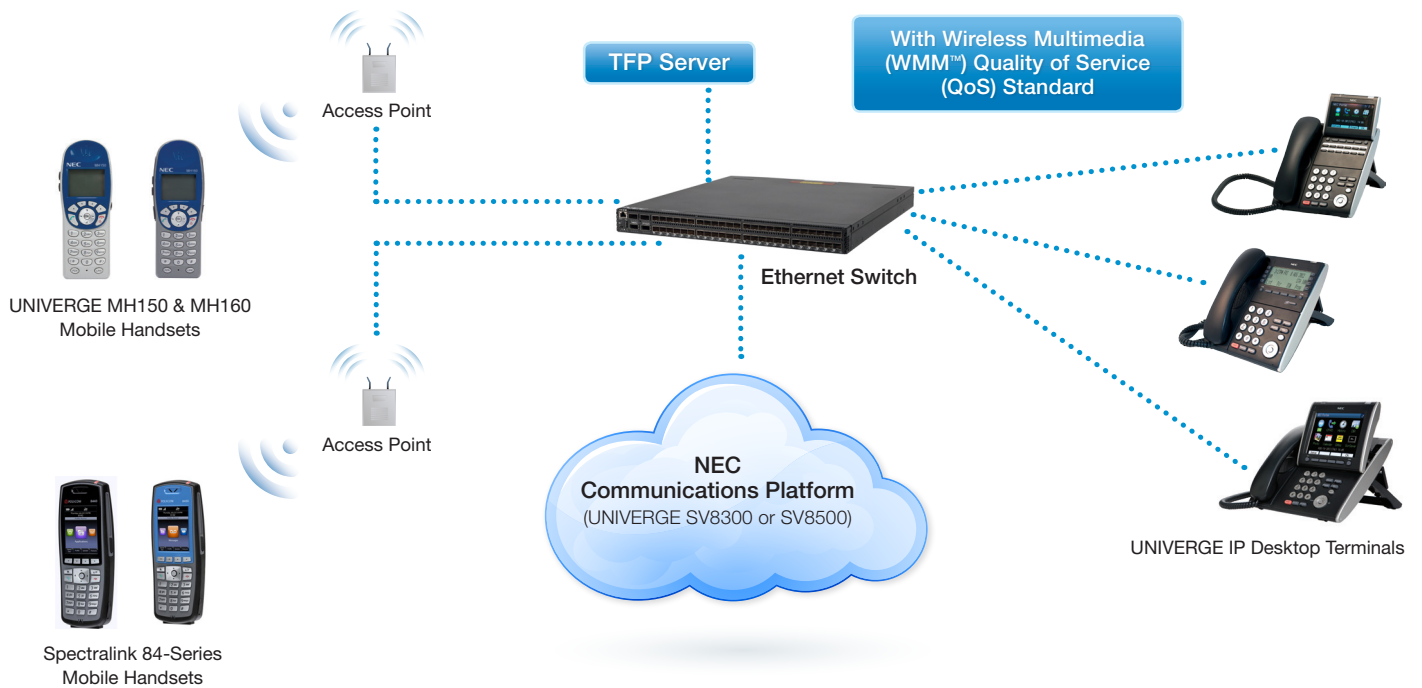


	UNIVERGE MH150 Mobile Handset	UNIVERGE MH160 Mobile Handset	Spectralink 8440 Handset	Spectralink 8441 Handset	Spectralink 8452 Handset	Spectralink 8453 Handset
Handset Features (cont.)						
Short Text Message	Yes - OAI server required. Nurse call System (NCS) app. or text messages can be received during any call state, except when switched off or out of range.	Yes - OAI server required. Nurse call System (NCS) app. or text messages can be received during any call state, except when switched off or out of range.	Yes - browser based. SDK available. Backward compatible with Spectralink OAI server. Nurse Call System (NCS) app. or text messages can be received during any call state, except when switched off or out of range.	Yes - browser based. SDK available. Backward compatible with Spectralink OAI server. Nurse Call System (NCS) app. or text messages can be received during any call state, except when switched off or out of range.	Yes - browser based. SDK available. Backward compatible with Spectralink OAI server. Nurse Call System (NCS) app. or text messages can be received during any call state, except when switched off or out of range.	Yes - browser based. SDK available. Backward compatible with Spectralink OAI server. Nurse call System (NCS) app. or text messages can be received during any call state, except when switched off or out of range.
Instant Messaging	No	No	Yes	Yes	Yes	Yes
Push-to-Talk	No	On-board native "walkie talkie" capabilities. One to one or one to many broadcast communications. 24 configurable channels, priority, default channel	On-board native "walkie talkie" capabilities. One to one or one to many broadcast communications. 24 configurable channels, priority, default channel	On-board native "walkie talkie" capabilities. One to one or one to many broadcast communications. 24 configurable channels, priority, default channel	On-board native "walkie talkie" capabilities. One to one or one to many broadcast communications. 24 configurable channels, priority, default channel	On-board native "walkie talkie" capabilities. One to one or one to many broadcast communications. 24 configurable channels, priority, default channel
VM/IM Indicator	Yes	Yes	Yes	Yes	Yes	Yes
Keyboard Lock	Yes	Yes	Yes	Yes	Yes	Yes
Earphone	Yes	Yes	Yes	Yes	Yes	Yes
Headset Option	Yes	Yes	Yes	Yes	Yes	Yes
Bluetooth	No	No	Yes, Version 2.1, HSP ver. 1.2, Class 1 support with range of ~ 10 meter. Not recommended for 2.4Hz spectrum (802.11bg)	Yes, Version 2.1, HSP ver. 1.2, Class 1 support with range of ~ 10 meter. Not recommended for 2.4Hz spectrum (802.11bg)	Yes, Version 2.1, HSP ver. 1.2, Class 1 support with range of ~ 10 meter. Not recommended for 2.4Hz spectrum (802.11bg)	Yes, Version 2.1, HSP ver. 1.2, Class 1 support with range of ~ 10 meter. Not recommended for 2.4Hz spectrum (802.11bg)
Ringer/Vibrate	Yes	Yes	Multiple vibrate cadence options	Multiple vibrate cadence options	Multiple vibrate cadence options	Multiple vibrate cadence options
Custom Banner	Yes	Yes	Yes	Yes	Yes	Yes
Directory	No	No	Yes, contacts directory with support up to 100 entries	Yes, contacts directory with support up to 100 entries	Yes, contacts directory with support up to 100 entries	Yes, contacts directory with support up to 100 entries
Default set	No	No	No	No	No	No
Reset all	No	No	No	No	No	No
Spare Battery charger	Dual Charger: Charges handset battery or a second battery via battery slot. Charging of the handset battery takes precedence if both slots are occupied.	Dual Charger: Charges handset battery or a second battery via battery slot. Charging of the handset battery takes precedence if both slots are occupied.	Dual Charger: Charges handset battery or a second battery via battery slot. Charging of the handset battery takes precedence if both slots are occupied.	Dual Charger: Charges handset battery or a second battery via battery slot. Charging of the handset battery takes precedence if both slots are occupied.	Dual Charger: Charges handset battery or a second battery via battery slot. Charging of the handset battery takes precedence if both slots are occupied.	Dual Charger: Charges handset battery or a second battery via battery slot. Charging of the handset battery takes precedence if both slots are occupied.
Multiple charging unit	Quad Charger: Charges four batteries simultaneously via battery slots. AC input: 110-230 V, 50/60 Hz DC output: 12 V/500mA (Single and Dual Chargers); 12 V/2 A (Quad Charger)	Quad Charger: Charges four batteries simultaneously via battery slots. AC input: 110-230 V, 50/60 Hz DC output: 12 V/500mA (Single and Dual Chargers); 12 V/2 A (Quad Charger)	Quad Charger: Charges four batteries simultaneously via battery slots. AC input: 110-230 V, 50/60 Hz DC output: 12 V/500mA (Single and Dual Chargers); 12 V/2 A (Quad Charger)	Quad Charger: Charges four batteries simultaneously via battery slots. AC input: 110-230 V, 50/60 Hz DC output: 12 V/500mA (Single and Dual Chargers); 12 V/2 A (Quad Charger)	Quad Charger: Charges four batteries simultaneously via battery slots. AC input: 110-230 V, 50/60 Hz DC output: 12 V/500mA (Single and Dual Chargers); 12 V/2 A (Quad Charger)	Quad Charger: Charges four batteries simultaneously via battery slots. AC input: 110-230 V, 50/60 Hz DC output: 12 V/500mA (Single and Dual Chargers); 12 V/2 A (Quad Charger)
Leather carrying case	Yes	Yes	Yes	Yes	Yes	Yes
Speakerphone dock	N/A	N/A	Yes - docking base provides full-duplex voice speakerphone	Yes - docking base provides full-duplex voice speakerphone	Yes - docking base provides full-duplex voice speakerphone	Yes - docking base provides full-duplex voice speakerphone
Talk/Standby	4hr talk/80 standby; 6hr talk/120 standby or 8hrs talk/160 hours standby	4hr talk/80 standby; 6hr talk/120 standby or 8hrs talk/160 hours standby	8hr talk/80 standby; 12hr talk/120 standby or 8hrs talk/160 hours standby	8hr talk/80 standby; 12hr talk/120 standby or 8hrs talk/160 hours standby	8hr talk/80 standby; 12hr talk/120 standby or 8hrs talk/160 hours standby	8hr talk/80 standby; 12hr talk/120 standby or 8hrs talk/160 hours standby
Scanner	No	No	No	No	Yes	Yes
Spectralink SAFE	No	No	No	Yes	No	Yes
Radio Specifications						
QoS Extensions	External SVP, WMM or CCX based on Polycom VIEW certified program	External SVP, WMM or CCX based on Polycom VIEW certified program	WMM or CCX - no support for SVP server. With existing WLAN network can not mix wireless QoS on same radio	WMM or CCX - no support for SVP server. With existing WLAN network can not mix wireless QoS on same radio	WMM or CCX - no support for SVP server. With existing WLAN network can not mix wireless QoS on same radio	WMM or CCX - no support for SVP server. With existing WLAN network can not mix wireless QoS on same radio
Connectivity						
Frequency	2.4-2.4835 GHz and 5.8GHz	2.4-2.4835 GHz and 5.8GHz	2.4-2.4835 GHz and 5.8GHz	2.4-2.4835 GHz and 5.8GHz	2.4-2.4835 GHz and 5.8GHz	2.4-2.4835 GHz and 5.8GHz
Frequency Band	802.11b/802.11g and 802.11a	802.11b/802.11g and 802.11a	802.11b/802.11g, 802.11a and 802.n (both 2.4GHz and 5GHz)	802.11b/802.11g, 802.11a and 802.n (both 2.4GHz and 5GHz)	802.11b/802.11g, 802.11a and 802.n (both 2.4GHz and 5GHz)	802.11b/802.11g, 802.11a and 802.n (both 2.4GHz and 5GHz)
Platforms						
NEC Platforms	UNIVERGE SV8300 & SV8500 - NEC IP seat licenses; UNIVERGE 3C - Standard SIP license	UNIVERGE SV8300 & SV8500 - NEC IP seat licenses; UNIVERGE 3C - Standard SIP license	UNIVERGE SV8100, SV8300, SV8500 & 3C - standard SIP license	UNIVERGE SV8100, SV8300, SV8500 & 3C - standard SIP license	UNIVERGE SV8100, SV8300, SV8500 & 3C - standard SIP license	UNIVERGE SV8100, SV8300, SV8500 & 3C - standard SIP license

UNIVERGE MH150 & MH160 Mobile Handsets Network Diagram



UNIVERGE MH150 & MH160 and Spectralink 84-Series Mobile Handsets Network Diagram



Empowered by Innovation

NEC

Corporate Headquarters (Japan)
NEC Corporation
nec.com

North America (USA & Canada)
NEC Corporation of America
necam.com

APAC
NEC Asia Pacific Pte Ltd
nec.com.sg

NEC Enterprise Solutions
NEC Europe Ltd
nec-enterprise.com

About NEC Corporation of America Headquartered in Irving, Texas, NEC Corporation of America is a leading provider of innovative IT, network and communications products and solutions for service carriers, Fortune 1000 and SMB businesses across multiple vertical industries, including Healthcare, Government, Education and Hospitality. NEC Corporation of America delivers one of the industry's broadest portfolios of technology solutions and professional services, including unified communications, wireless, voice and data, managed services, server and storage infrastructure, optical network systems, microwave radio communications and biometric security. NEC Corporation of America is a wholly-owned subsidiary of NEC Corporation, a global technology leader with operations in 30 countries and more than \$38.5 billion in revenues. For more information, please visit necam.com.

HW12015 | v.10.02.13

© 2013 NEC Corporation. All rights reserved. NEC, NEC logo, and UNIVERGE are trademarks or registered trademarks of NEC Corporation that may be registered in Japan and other jurisdictions. All trademarks identified with © or ™ are registered trademarks or trademarks respectively. Models may vary for each country. Please refer to your local NEC representatives for further details.