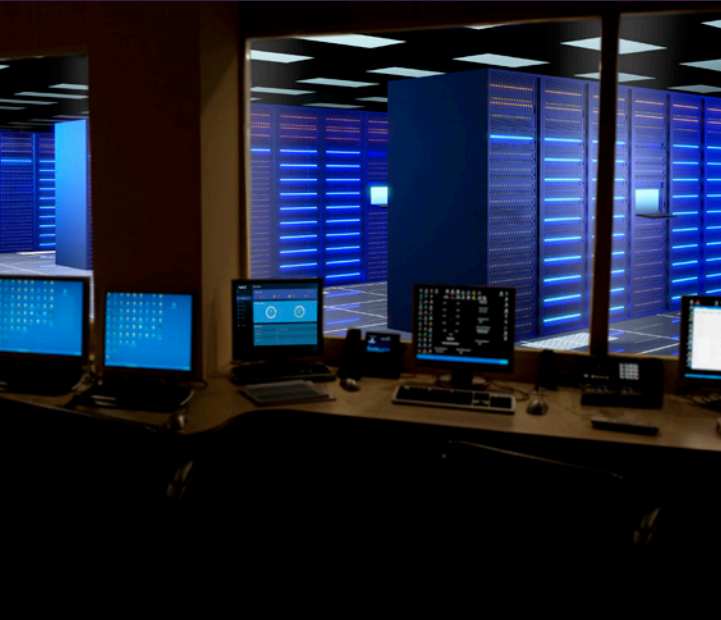


QX-S6600 Series Aggregation 10-Gigabit Ethernet Switches



At a Glance

- Versatile Aggregation switches targeted for Enterprise networks
- In conjunction with QX-S5200 series (1G PoE access switch with 10G Ethernet up-links) and QX-S4100 series (1G PoE access switch with 1G Ethernet up-links) can be used to implement a complete enterprise network
- Full featured L2 and L3 forwarding
- Available in two configurations:
 - ◆ 48 10-Gigabit ports with six 40 Gbps up-links
 - ◆ 32 40-Gigabit ports
- Redundant power supply

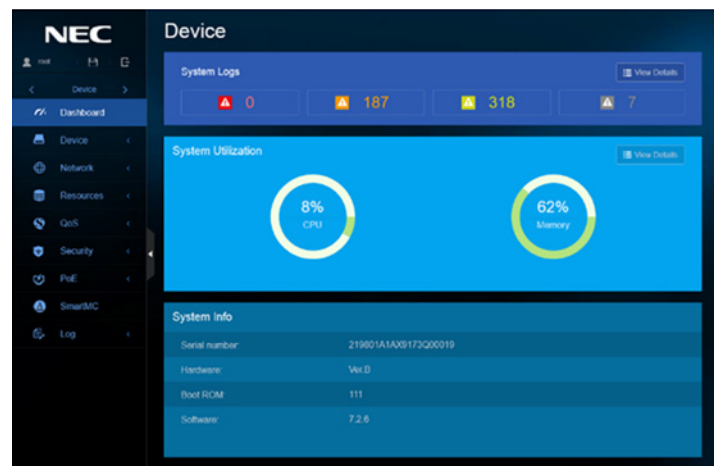
Overview

NEC's QX-S6600 Series 10 Gigabit aggregation switches offer businesses the flexibility to easily connect multiple edge switches with 10 Gigabit up-links.

The six 40 Gigabit up-links offer high bandwidth in single or redundant configurations.

Main Product Features

- 48 10-Gigabit ports (copper or SFP+) with six 40 Gbps up-links (QSFP+)
- 32 40-Gigabit ports (QSFP+)
- Support for L2/L3 forwarding, QoS, Security, Multicast & VLAN
- CLI and WebGUI management console



QX-S6600 Series WebGUI

Specifications

Features		S6648XP-6Q	S6648XT-6Q	S6638QP
Performance	Switching capacity [bps]	20.0G		56.0G
	Transfer rate [pps]	14.8M		41.6M
	Switching method	S&F		
	MAC address table	288K		
	Routing table (IPv4/IPv6)	16K/8K		
	ARP table	16K		
Interface	10Gbe	1/10GBASE-T	-	-
		SFP+ slot	48	-
	40Gbe	QSFP+ slot	6	6
Management	Console Port	√	√	√
	Management Port	2 (RJ45, SFP)		1
IRF	IRF stack version	IRFv2		
	Maximum number of IRF stacks	9		
	MAD/ISSU	√ / √		
VLAN	IEEE802.1Q	√		
	Port VLAN	√		
	Protocol VLAN	√		
	Voice VLAN	√		
	Maximum number of VLAN	4094[2048]		
	VLAN mapping	√		
	QinQ	√		
Port function	Auto Negotiation/ fixed speed and duplex (full/half)	√ / √		
	Auto MDI • MDIX/ fixed MDIX	√ / √		
	Flow control (IEEE802.3X)	√		
	EAP transmitted/BPDU transmitted	√ / √		
	Port isolate	√		
	Packet transfer suppression	B/M/U		
	Storm-constrain	B/M/U		
	Jumbo Frame (byte)	1000		
	Loop detection (multi port loop supported)	√		
	One-way link detection (DLDP)	√		
	Ethernet OAM (IEEE802.3ah)	-		
	Link aggregation (LACP supported)	√		
Spanning tree		S/R/M/P		
Ring protocol (RRPP)		√		
Packet filter (ACL)		√		
IPv6 management		√		
QoS	SPQ	√		
	WRR	√		
	WFQ	√		
	WRED	√		
	Bandwidth control	LR/CAR/GTS		
	Trust/Marking	√		
	Number of QoS classes	8		

√ = Available
 - = Not Available

Specifications (cont.)

Features		S6648XP-6Q	S6648XT-6Q	S6638QP
Security	802.1X authentication		-	
	MAC address authentication		-	
	Web authentication		-	
	Triple authentication		-	
	Port security		-	
	Local authentication		√	
Tunnel		GRE tunnels (IPv4 over IPv4 / IPv4 over IPv6 / IPv6 over IPv4, IPv6 over IPv6)		
Routing related	Static		√	
	BFD		√	
	RIP (v1, v2), OSPF (v2, v3), BGP (v4)		√	
	Policy Based Routing, VRPP, VFR-lite		√	
Multicasting	Multicast VLAN		√	
	IGMPv1/v2/v3 snooping		√	
	MLDv1/v2 snooping		√	
Management function	telnet/ssh/WEB console		√ / √ / -	
	FTP • TFTP client/FTP server		√ / √	
	LLDP		√	
	DHCP		C/R/SV/SN	
	NTP client/NTP server		√ / √	
	Syslog		√	
	Log file		√	
	SNMPv1/v2c/v3		√	
	Standard MIB, Private MIB		√	
	RMON		√	
	sFlow		√	
	Port mirroring		√	
Eco function	Scheduled task		√	
Physical specification	External dimension (W x D x H) [mm]	440 x 401 x 44.0	440 x 461 x 44.0	440 x 661 x 43.6
	Weight	5.8 kg	7.2 kg	10.6 kg
	AC power input (50/60Hz)		100~240V (90~264V)	
	Maximum power consumption	177W	280W	374W
	Redundant power supply		√	
	Operating temperature/humidity (non-condensing required)		0~45°/10~90%	

√ = Available
 - = Not Available

S6648XP-6Q



S6648XT-6Q



S16632QP



Corporate Headquarters (Japan)
NEC Corporation
nec.com

North America (USA & Canada)
NEC Corporation of America
necam.com

EMEA (Europe, Middle East, Africa)
NEC Enterprise Solutions
nec-enterprise.com

APAC
NEC Asia Pacific Pte Ltd
sg.nec.com

Latin America
NEC Latin America
latam.necam.com

About NEC Corporation of America: Headquartered in Irving, Texas, NEC Corporation of America is a leading technology integrator providing solutions that improve the way people work and communicate. NEC delivers integrated Solutions for Society that are aligned with our customers' priorities to create new value for people, businesses and society, with a special focus on safety, security and efficiency. We deliver one of the industry's strongest and most innovative portfolios of communications, analytics, security, biometrics and technology solutions that unleash customers' productivity potential. Through these solutions, NEC combines its best-in-class solutions and technology, and leverages a robust partner ecosystem to solve today's most complex business problems. NEC Corporation of America is a wholly-owned subsidiary of NEC Corporation, a global technology leader with a presence in 160 countries and \$25.2 billion in revenues. For more information, visit necam.com.