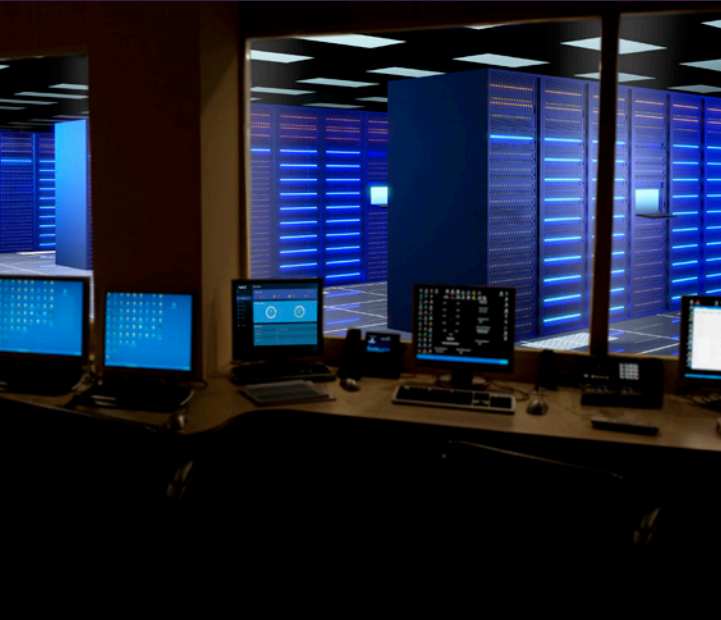


QX-S5100 Series PoE+ Gigabit Ethernet Switches



At a Glance

- Versatile Power over Ethernet Plus (PoE+) switches that can be utilized in both traditional and SDN network environments as edge devices or standalone
- Connects to IP telephones or other devices that require PoE
- Supports NEC's Network Operation Engine that provides network automation and virtualization managed through an easy-to-use management interface. It simplifies day to day network management with drag-and-drop network configuration and high-availability resulting in a secure, flexible and centrally configurable Enterprise Campus Network.
- Saves time and expense by not having to install electrical power wiring
- Offers the flexibility of placing PoE devices where needed most and ability to relocate them easily
- Can be managed by the NOE Controller, WebGUI management console or Command Line Interface (CLI)

Overview

NEC's QX-S5100 Series Power over Ethernet Plus (PoE+) Gigabit switches offer businesses the flexibility to easily deploy PoE devices wherever needed.

Since a PoE switch enables network cables to carry electrical power, installing additional power outlets is not required – saving time and expense. Another advantage is scalability – PoE enables quick and efficient deployment of network devices.

Main Product Features

- 24 and 48 PoE+ 10/100/1000 Ethernet Ports (can connect to IP phones and other PoE devices that require up to 30W)
- 4 Gigabit SFP Uplink ports
- Support for L2 and L3 forwarding, QoS, Security, Multicast, & VLAN
- Support Static and RIP policy-based Routing functions
- CLI and WebGUI management console
- Network Operation Engine compatible
- High Speed stack connection function (Intelligent Resilient Framework)



QX-S5100 Series WebGUI

Specifications

Features		S5124GT-4X-PW	S5148GT-4X-PW	
Performance	Switching capacity [bps]	128.0G	176.0G	
	Transfer rate [pps]	95.2M	130.9M	
	Switching method		S&F	
	MAC address table		16K	
	Routing table (IPv4/IPv6)		512/256	
Interface	ARP table		1K	
	10Gbe	SFP slot	4 (*)	-
		SFP+ slot	4	4
	40Gbe	QSFP+ slot	-	-
	Console Port	√	√	
PoE+	Number of power feedable interfaces	24 (*)	48	
	Power feeding standard		IEEE802.3at	
	Maximum power supply amount per port		30.0W	
	Maximum power supply amount per device		370.0W	
IRF	IRF stack version		IRFv2	
	Maximum number of IRF stacks		6	
	MAD/ISSU		√/-	
VLAN	IEEE802.1Q		√	
	Port VLAN		√	
	Protocol VLAN		√	
	Voice VLAN		√	
	Max. number of VLAN [number of settable IP addresses]		4094[32]	
	VLAN mapping		√	
	QinQ		√	
Port function	Auto Negotiation/fixed speed and duplex (full/half)		√/√	
	Auto MDI • MDIX/ fixed MDIX		√/√	
	Flow control (IEEE802.3X)		√	
	EAP transmitted/BPDU transmitted		√/√	
	Port isolate		√	
	Packet transfer suppression		B/M/U	
	Storm-constrain		B/M/U	
	Jumbo Frame (byte)		10000	
	Loop detection (multi port loop supported)		√	
	One-way link detection DLDP)		√	
	Ethernet OAM (IEEE802.3ah)		√	
	Link aggregation (LACP supported)		√	
	Spanning tree		S/R/M/P	
Ring protocol (RRPP)		√		
Packet filter (ACL)		√		
IPv6 management		√		
QoS	PQ		√	
	WRR		√	
	Bandwidth control		LR/CAR/GTS	
	Trust/Marking		√/√	
	Number of QoS classes		8	

Note:

(*) The four highest-numbered 10/100/1000BASE-T autosensing Ethernet ports and their corresponding SFP ports form combo interfaces

√ = Available

- = Not Available

Specifications (cont.)

Features		S5124GT-4X-PW	S5148GT-4X-PW
Security	802.1X authentication		√
	MAC address authentication		√
	Web authentication		√
	Triple authentication		√
	Port security		√
	Dynamic VLAN		PORT/MAC
Routing related	Local authentication		√
	Static		√
	RIP, OSPF		√
	Policy-Based Routing		√
	VRRP		√
	BFD		-
Multicasting	Multicast VLAN		√
	IGMPv1/v2/v3 snooping		√
	MLDv1/v2 snooping		√
SDN Ready	SDN supported	Network Operation Engine (NOE)	
	Maximum flow entry		500
Management function	telnet/ssh/WEB console		√ / √ / √
	FTP • TFTP client/FTP server		√ / √
	LLDP		√
	DHCP		C/R/SV/SN
	NTP client/NTP server		√ / -
	Syslog		√
	Log file		√
	SNMPv1/v2c/v3		√
	Standard MIB, Private MIB		√
	RMON		√
	sFlow		√
	Port mirroring		√
	Eco function	Scheduled task	
IEEE802.3az			√
Physical specification	External dimension (W x D x H) [mm]	440 x 260 x 43.6	440 x 400 x 43.6
	Weight	4.5kg	6kg
	AC power input (50/60Hz)	100~240V (90~264V)	
	Maximum power consumption (PoE fed power included)	451W	478W
	Fanless	-	-
	Operating temperature/humidity (non-condensing req.)	0~45°/10~90%	
VCCI ClassA / RoHS support		√ / √	

√ = Available
- = Not Available

S5124GT-4X-PW



S5148GT-4X-PW



For further information please contact your local NEC representative or:

North America (USA)
NEC Corporation of America
www.necam.com

South Asia (Singapore)
NEC Asia Pacific
www.nec.com.sg

**Corporate Headquarters
(Japan)** NEC Corporation
www.nec.com

Oceania (Australia)
NEC Australia Pte Ltd
www.nec.com.au

EMEA (Europe, Middle East, Africa)
NEC Enterprise Solutions
www.nec-enterprise.com

About NEC Corporation: NEC Corporation is one of the world's leading providers of Internet, broadband network and enterprise business solutions dedicated to meeting the specialized needs of its diverse and global base of customers. NEC delivers tailored solutions in the key fields of computer, networking and electron devices, by integrating its technical strengths in IT and Networks. The NEC Group employs more than 150,000 people worldwide. For additional information, please visit the NEC home page at: <http://www.nec.com>

© 2021 NEC Corporation. NEC is a registered trademark of NEC Corporation. All rights reserved. Other product or service marks mentioned are the trademarks of their respective owners. Models may vary for each country. Due to continuous improvements this specification is subject to change without notice.