

Manage-I

Your Window to Smart Warehouse
& Inventory Management

Order Pick Time

01 : 00 : 00

Ready



Out of stock



Out of stock



Out of stock



Order Pick Time

01 : 30 : 00

Out of stock



Out of stock



Ready



Running out of stock



Ready



Index

- Introduction
- Industry Challenges
- Manage-I Introduction & Overview
- Product Features & Benefits
- Value Propositions
- Demo Screens
- Business Impact
- Why Manage-I



Efficient Warehouse Management is Crucial for Supply Chain



Agile supply chains a pre-requisite post pandemic

- Expanding demand
- Increasingly shorter delivery times



Imperatives imposed

- Efficient warehouse management
- On-time order fulfillment

WMS allows total control of the logistics operations in the warehouse, through automated and intelligent processes, starting from the moment a merchandise enters the warehouse till it is dispatched



Inventory Control
& Management



Customer Service
& Tracking



Enhance
Productivity



Cost & Resource
Saving



Client
Satisfaction

Industry Challenges

Lack of digitization means loss of time, cost and resources, with suboptimal operations and dissatisfied customers

High Inventory Carrying Costs

- Arises from products shelved at a warehouse
- Includes storage, labor, shrinkage etc
- Comprises **20% to 30%** of total inventory value
- Increases with length of time

Poor Warehouse Layout & Stock Tracking

- Inefficient space usage
- Inadequate storage
- Inaccurate tracking of goods
- Incorrect receipts and purchase order
- Repeat verification of manual tracking system

Poor Inventory & Vehicle Management

- Inaccurate inventory levels
- Obsolete inventory buildup
- Poor vehicle and dock management

Inaccurate Data

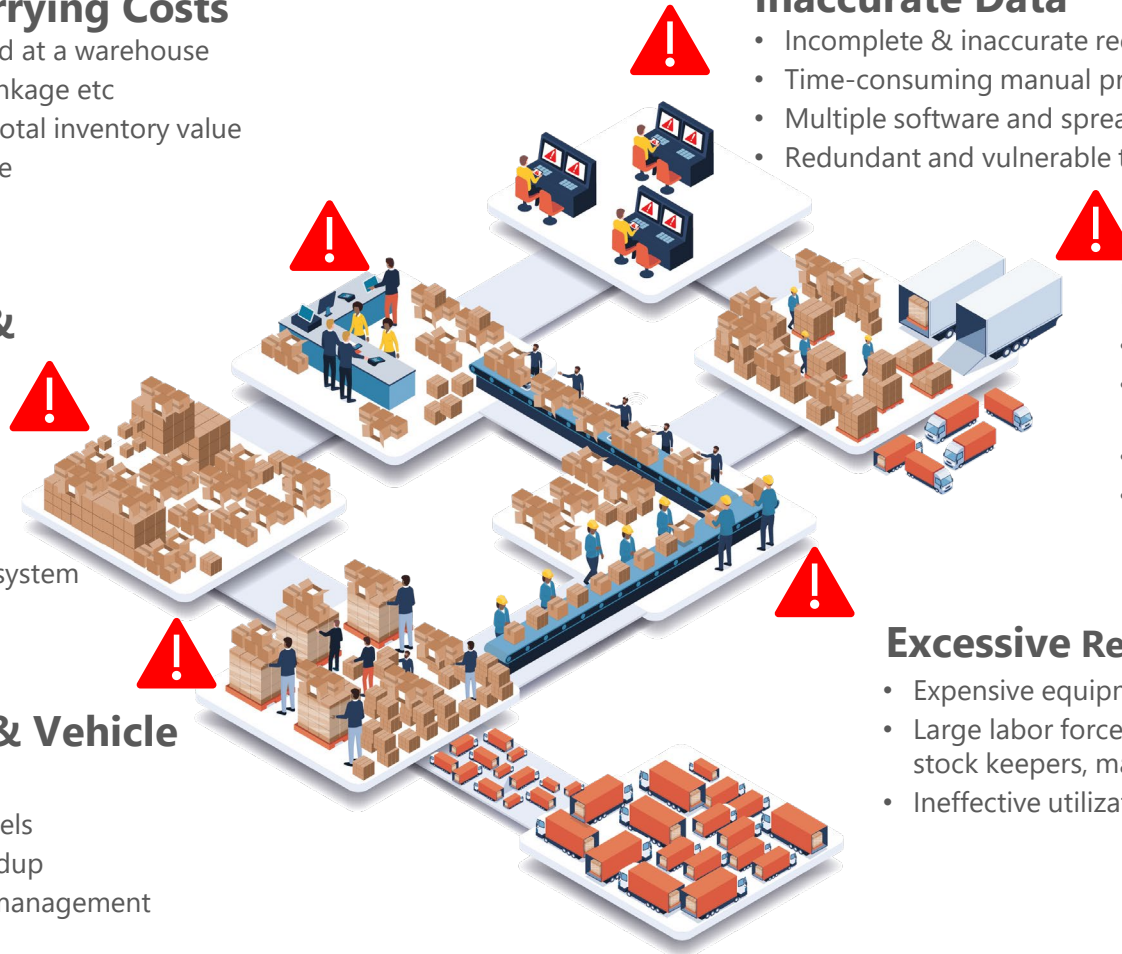
- Incomplete & inaccurate records
- Time-consuming manual processes
- Multiple software and spreadsheets
- Redundant and vulnerable to errors

Unsatisfactory Order Delivery

- Collapse of the entire workflow
- Mismatch right from order logging to picking and packing
- Shipping of wrong products
- Delayed delivery to wrong address

Excessive Resources

- Expensive equipment
- Large labor forces (cleaners, packers, stock keepers, managers, administrators)
- Ineffective utilization of resources





NEC Integrated Solution for End-to-end Warehouse Management



Flexible
On-Prem / cloud-based
integrated, customizable
solution



Tracks every unit down to
the SKU Level for improved
order fulfillment and
inventory accuracy



Enables
a much **faster, easier and**
efficient inventory
management

Functional Overview

Manage-I



INBOUND

- Advance Shipment Notice
- Receiving
- Gate-in
- Quality Check
- Putaway

INVENTORY MGMT

- Inventory Planning
- Inventory Search
- Inventory Audit
- Adjustments
- Inventory Rotations
- Traceability

OUTBOUND

- Order & Allocation
- Kitting & Sorting
- Picking & Dispatch
- Shipment
- Vehicle Loading & Gate-out

VALUE ADDED SERVICES

- SMS/Email Alert & Notifications
- Configurable Access Control
- Warehouse Layout Configuration
- EDI Integration Support
- API/ Other System Integration



Reports (Excel, PDF, CSV) & Analytical Dashboard

Manage-I Feature List



Inbound

Inbound Cycle Starts

Order Management

- Partial and full order receiving and fulfilment
- Manage order priority and status
- Order short closure

Vehicle Management

- Capture vehicle details
- Gate pass generation
- Gate in/out management
- Vehicle unloading with HHT device

Quality Audit

- Full quantity or sample based
- Configurable Quality flag at product level
- Separate storage for bad (NG) products

Receiving

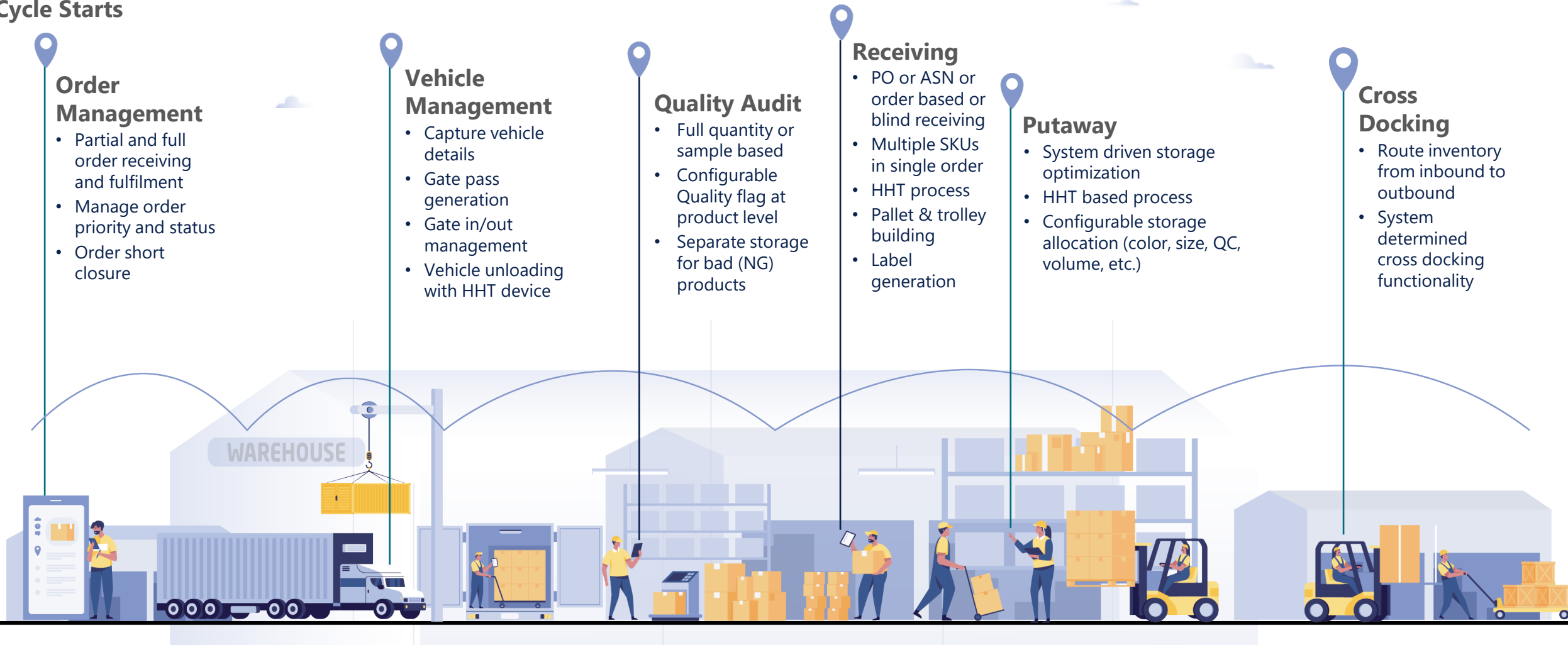
- PO or ASN or order based or blind receiving
- Multiple SKUs in single order
- HHT process
- Pallet & trolley building
- Label generation

Putaway

- System driven storage optimization
- HHT based process
- Configurable storage allocation (color, size, QC, volume, etc.)

Cross Docking

- Route inventory from inbound to outbound
- System determined cross docking functionality



Outbound

Order & Vehicle Management

- Dispatch order creation and item allocation
- Capture vehicle details
- Gate In/Out
- POD (Proof of dispatch) upload

Picking & Dispatch

- Web and HHT based picking process
- Delivery by serial no. or group of tasks
- Task grouping
- Picking and Dispatch list generation

Kitting/ Dekitting

- BOM based kitting
- Kit to order and kit to stock features

Wave Management

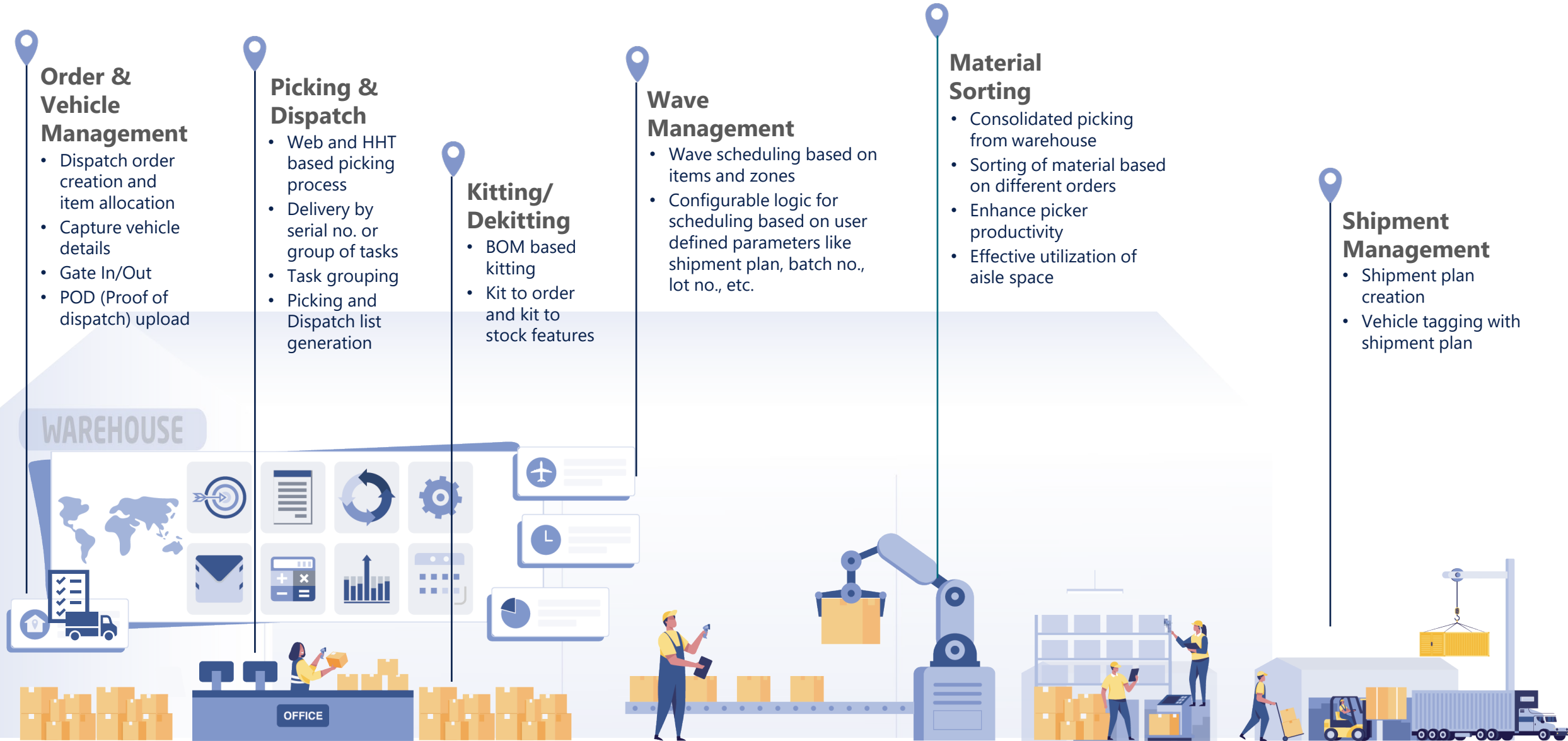
- Wave scheduling based on items and zones
- Configurable logic for scheduling based on user defined parameters like shipment plan, batch no., lot no., etc.

Material Sorting

- Consolidated picking from warehouse
- Sorting of material based on different orders
- Enhance picker productivity
- Effective utilization of aisle space

Shipment Management

- Shipment plan creation
- Vehicle tagging with shipment plan



Inventory Management

Inventory Planning & Monitoring

- Inventory planning
- Accurate item placement
- Inventory traceability
- Inventory relocation

Real-Time Tracking

- Real-time data capturing during inbound & outbound
- Real-time data capture from HHT & Web

Barcoding/ Serial/Lot/Batch

- Inventory tracking based on scannable bar codes, serial no., lot no., and batch no.
- Granular level tracking of Items in warehouse

Inventory Audit

- Inventory reconciliation – System vs Actual
- Inventory adjustment based on cycle count
- Cycle count based on zone/location/product

Alert Management

- System driven alert management
- Email and SMS based alert mechanism
- Real-time alerts based on configuration

Reporting & Analytics

- Static reports
- Automatically scheduling of reports to get data at regular interval
- BI analytical dashboard with KPIs



Configuration Management

SKU/Batch Mixing

- UI configuration to allow SKU / batch mixing during putaway
- Manage multiple SKUs in same storage bin, storage optimization



Inventory Rotation Methods

- Different inventory methods- FIFO, LIFO, EEFO(First Expiry First Out) & FMFO(First Manufacturing First Out)



Putaway & Picking Algorithm

- Configurable putaway rules at item level, system suggested locations during putaway
- Rules based on volume, color, origin, region, size, QC conditions etc.



UOM Management

- Custom UOM management
- 5 Levels of UOM/packaging configuration – Container > Cases > Pallets > Boxes > Each
- Receiving & Picking at any config UOM level



Internationalization

- Multiple languages, time & currency support



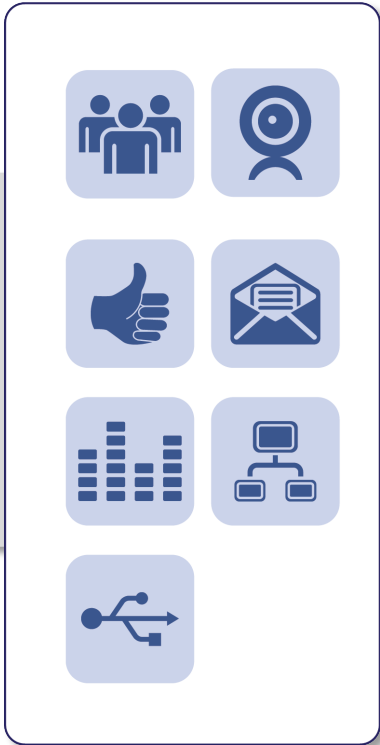
Integration Layer

- APIs based integration across systems- ERP, MES, LMS etc.
- EDI and FTP based data exchange is also available



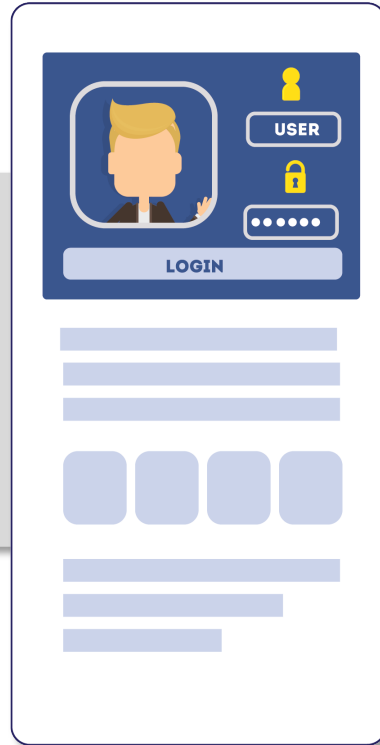
Core Features

Access Control



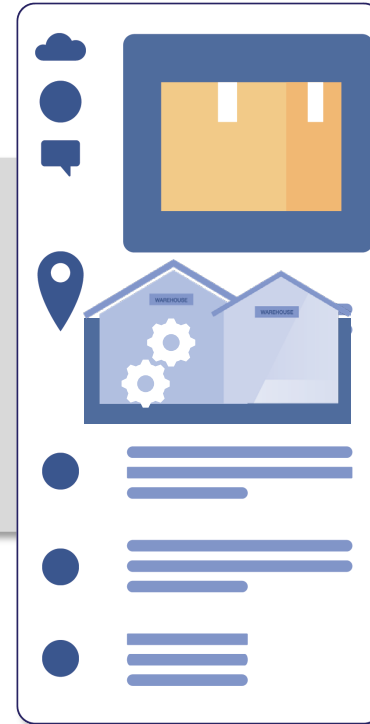
- **Role based accessibility** of screens
- **Granular level access** - user group, visibility group, screen access, etc.

Configurable User Profile



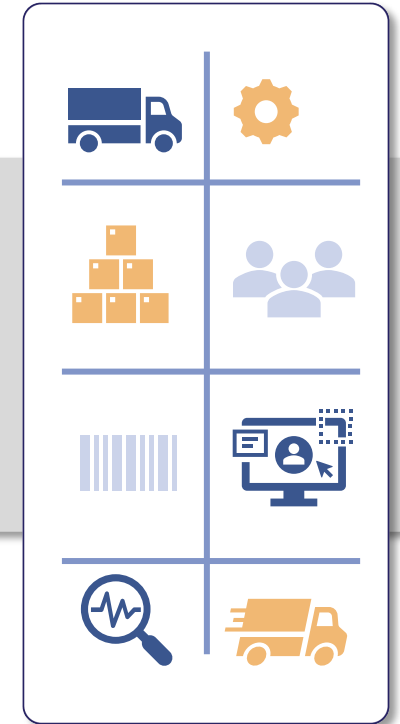
- **User creation** and profile management
- **Skills definition** at user level
- **User group** for different warehouse access
- **Roles** based on business need

Warehouse Design & BOM Management



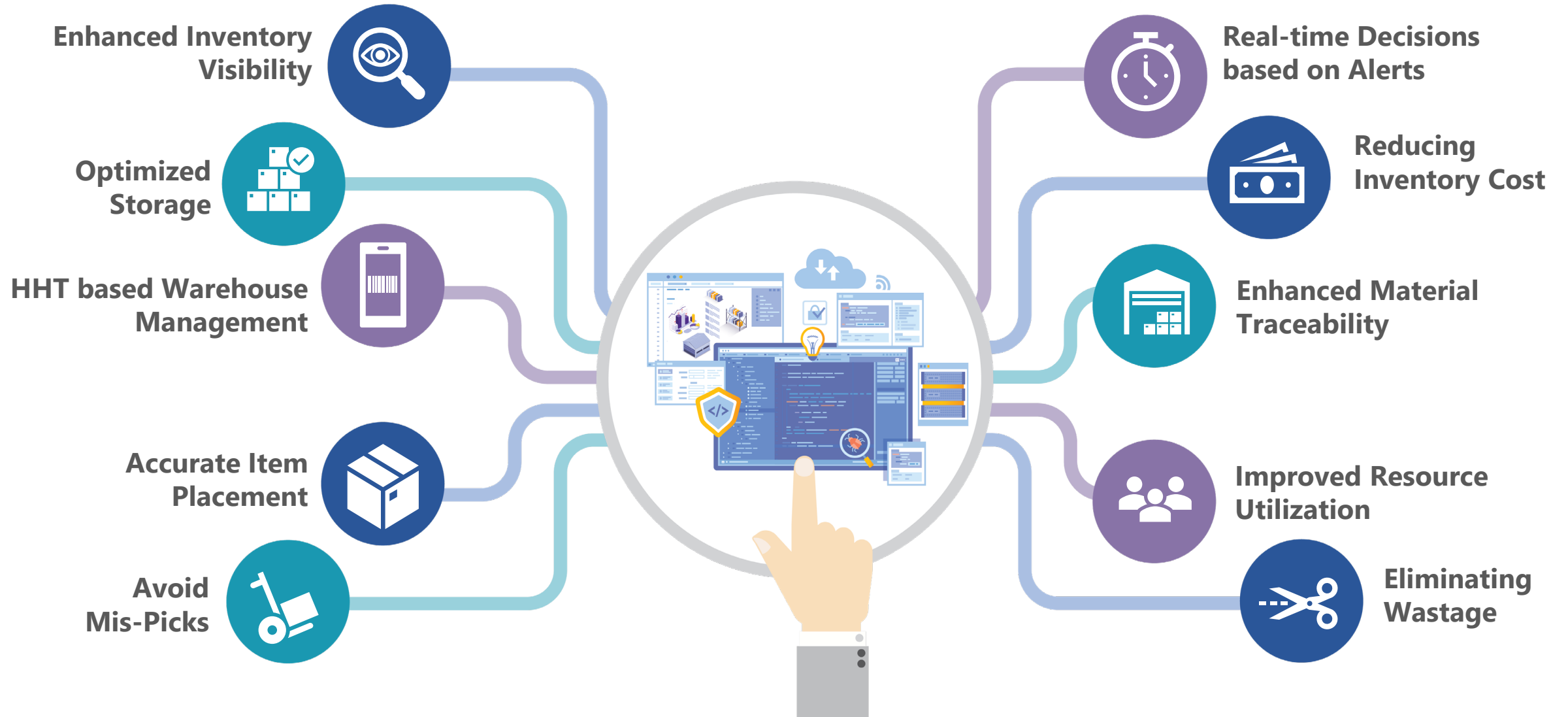
- **Extensive hierarchy mapping**- company to storage bin
- **Multiple warehouse management** with zones, locations, and mapping
- **BOM** - Maintaining versioning of child parts, BOM directed kitting

HHT Application



- Different **inbound & outbound operations** using HHT
- **Fast and quick action** performed by warehouse operators
- **Android** based application

Key Benefits



Value Proposition Manage-I



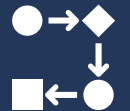
**Web Based/
Cloud Ready
Solution**



**Multi-tenant
Capabilities**



**Industry Best
Practices
Templates**



**Configurable
Workflow**



**Fast
implementation
with Cost
Advantage**



**HHT Offline
Mode**

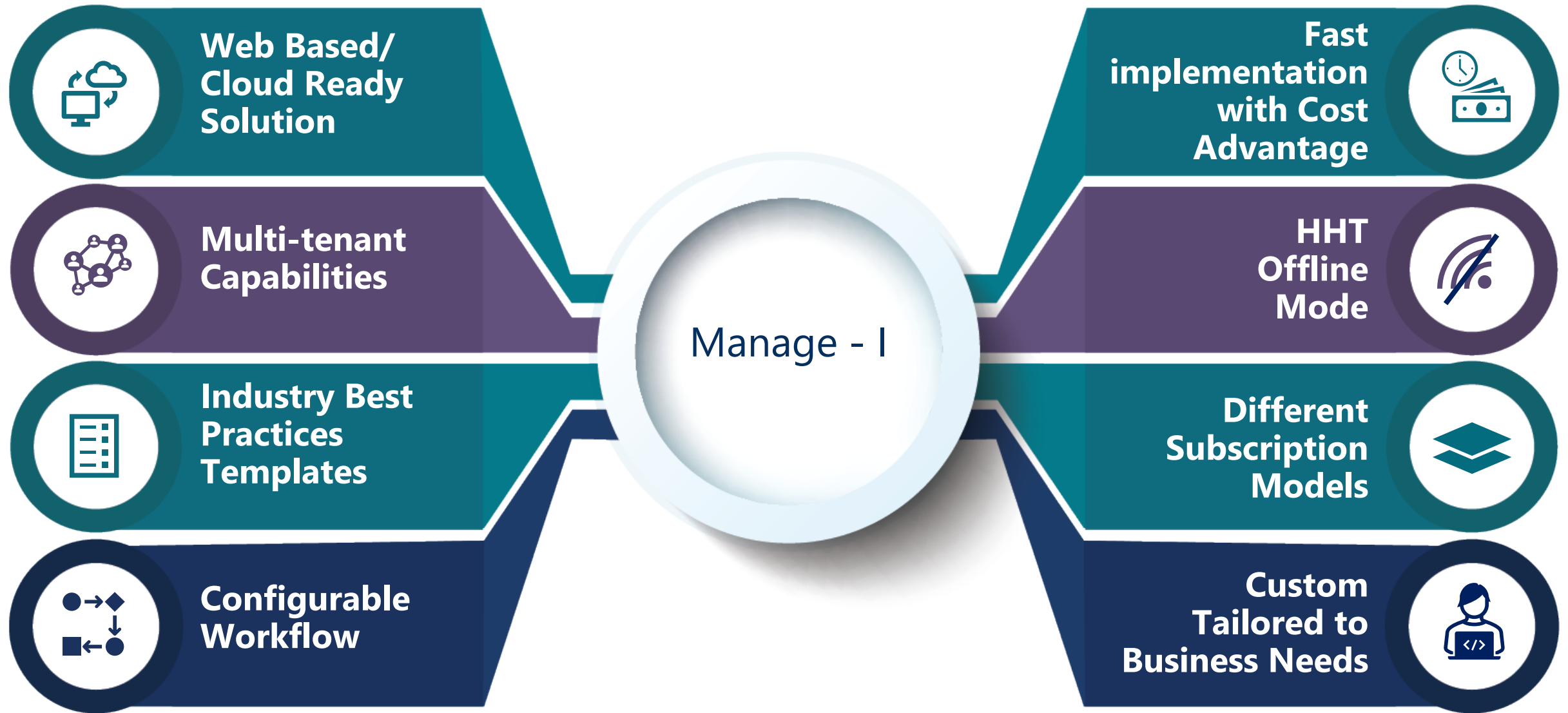


**Different
Subscription
Models**



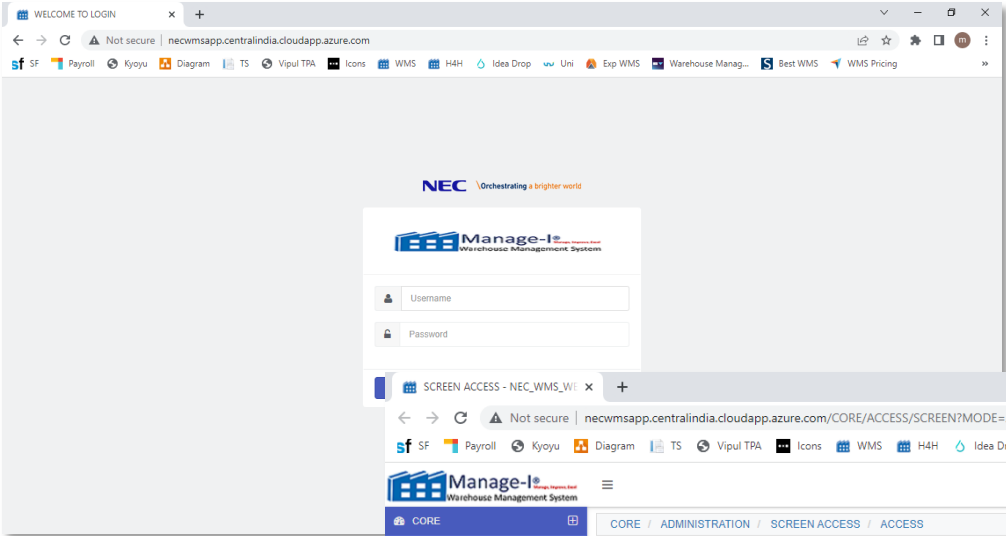
**Custom
Tailored to
Business Need**

Value Proposition

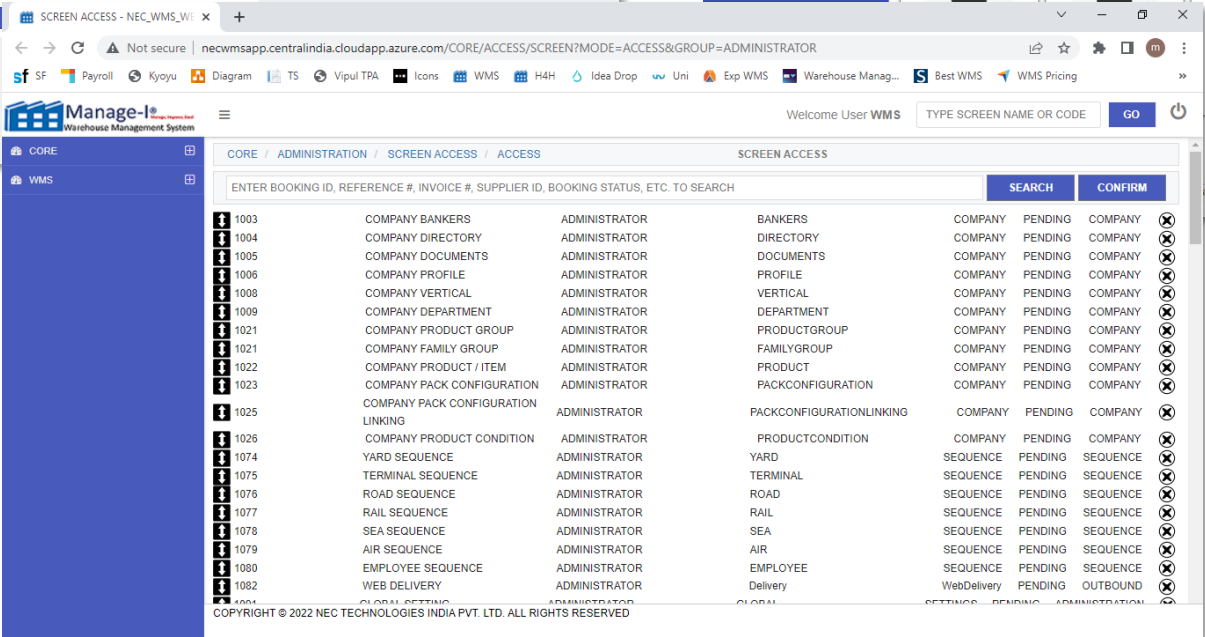
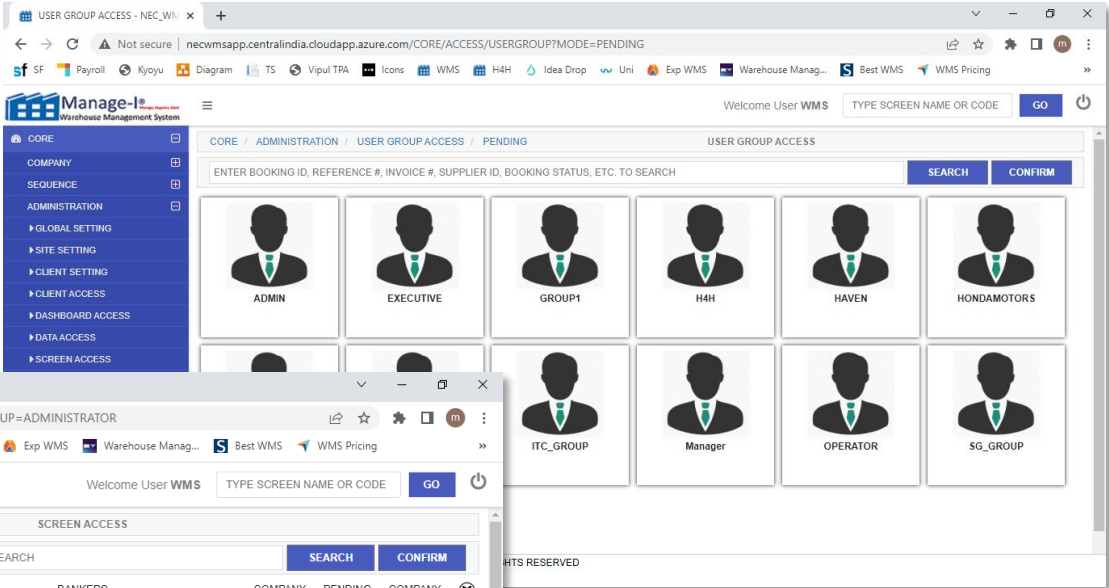


System Live View

Login Screen



User Group Screen



Screen Access

System Live View

Inbound Order Screen

BOOKING HEADER - NEC_WMS

newmsapp.centralindia.cloudapp.azure.com/WMS/BOOKING/BOOKING?MODE=PENDING

Manage-It Warehouse Management System

Welcome User WMS

TYPE SCREEN NAME OR CODE

GO

WMS / INBOUND / ORDER / PENDING

Receiving Maintenance

Order Number: Order Date: Order Status:

Customer Code: --SELECT-- Supplier ID: Warehouse Code: --SELECT--

SEARCH CREATE UPLOAD

Record(s): 9

Action	Order Number	Order Date	Order Type	No. of Lines	Order Status	Warehouse Code	Customer Code	Supplier ID
<input checked="" type="checkbox"/>	ITC/ITC/16/IB/000336	18-MAY-2022	EXPORT	1	COMPLETE	ITC_WAREHOUSE	ITC	SUPP1
<input checked="" type="checkbox"/>	TES/101/16/IB/000333	26-APR-2022	EXPORT	1	COMPLETE	101010	TEST_01	SUPPLIER1
<input checked="" type="checkbox"/>	HAV/HAV/16/IB/000332	07-MAR-2022	EXPORT	1	COMPLETE	HAVEN_WAREHOUSE	HAVEN01	WALMART
<input checked="" type="checkbox"/>	HAV/HAV/16/IB/000331	04-MAR-2022	EXPORT	2	COMPLETE	HAVEN_WAREHOUSE	HAVEN01	SUPPLIER1
<input checked="" type="checkbox"/>	NEC/101/16/IB/000330	03-MAR-2022	EXPORT	1	COMPLETE	101010	NEC_SG	H4H
<input checked="" type="checkbox"/>	TEX/H4H/16/IB/000328	02-MAR-2022	EXPORT	2	IN PROGRESS	H4H_W1	TEXAS01	H4H_D1
<input checked="" type="checkbox"/>	TEX/ERW/16/IB/000327	02-MAR-2022	EXPORT	1	IN PROGRESS	ERW_W1	TEXAS01	H4H_D1
<input checked="" type="checkbox"/>	HAV/HAV/16/IB/000329	02-MAR-2022	EXPORT	1	IN PROGRESS	HAVEN_WAREHOUSE	HAVEN01	SUPPLIER1
<input checked="" type="checkbox"/>	TES/HAV/16/IB/000326	28-FEB-2022	EXPORT	1	IN PROGRESS	HAVEN_WAREHOUSE	HAVEN01	SUPPLIER1

COPYRIGHT © 2022 NEC TECHNOLOGIES INDIA PVT. LTD. ALL RIGHTS RESERVED

Inventory Summary Report

INVENTORY SUMMARY - NEC_WMS

newmsapp.centralindia.cloudapp.azure.com/WMS/INVENTORY/Summary?MODE=SEARCH&isText=9942000128&SITE=101010%2CDUMMYWARHO...

Manage-It Warehouse Management System

Welcome User WMS

TYPE SCREEN NAME OR CODE

GO

WMS / INVENTORY / INVENTORY SUMMARY / SEARCH

INVENTORY SUMMARY

Product Code: 9942000128 Origin: --SELECT-- Customer Code: --SELECT--

Warehouse Code: --SELECT-- Order Header ID:

SEARCH

Product Code	Product Description	Location Zone	Condition Code	Total Qty	Origin	Batch	Manufacturing Date	Expiry Date	Unit Qty	Volume	Expired	Inventory Return
9942000128	BOYS TRACKSUIT SHIRT	N0IDAZONE	GOOD	2167					PCS	28.000000	N	N
9942000128	BOYS TRACKSUIT SHIRT		GOOD	100					PCS	28.000000	N	N
9942000128	BOYS TRACKSUIT SHIRT	N0IDAZONE	GOOD	1000					PCS	28.000000	N	N
612									PCS	28.000000	N	N

COPYRIGHT © 2022 NEC TECHNOLOGIES INDIA PVT. LTD. ALL RIGHTS RESERVED

USERS DASHBOARD - NEC_WMS

newmsapp.centralindia.cloudapp.azure.com/CORE/USERS/DASHBOARD

Manage-It Warehouse Management System

Welcome User WMS

TYPE SCREEN NAME OR CODE

GO

CORE / PROFILE / USER DASHBOARD / SEARCH

USERS DASHBOARD

ENTER BOOKING ID, REFERENCE #, INVOICE #, SUPPLIER ID, BOOKING STATUS, ETC. TO SEARCH

SEARCH CUSTOMIZE

Inventory Accuracy

76.5% total accuracy

Target: 93.5%

Stock Out

Inventory Turn Days

4.3 (Compared to 5.4 Last month)

Inventory Value (On Hand)

31.6 Mn (Compared to 34.3 Mn Last month)

Zonewise Storage Utilization

Zonewise Inventory Level

Inventory Level by Process

Zonewise Inventory Accuracy

98.3 % Accuracy

Modelwise Part Shortages

Weekwise Production

Perfect Order Rate

94.50%

COPYRIGHT © 2022 NEC TECHNOLOGIES INDIA PVT. LTD. ALL RIGHTS RESERVED

User Dashboard

Business Impact



*Impact is calculated based on existing customers, it could be defer from business to business and process to process

Why Manage-I?

Flexible, customizable Warehouse Management System,
with simple user interface and features, on-prem/cloud-based solution that scales with your business needs

Wide Industry Coverage

Caters all industries like 3PL, Manufacturing, Automotive, Retail, FMCG, Electronics, Pharmaceutical etc.



Latest Technology Stack

Latest & robust technologies like .Net framework, Angular, JQuery, MS SQL, Jenkins etc.



Lower TCO - Cost Effective

2X lower license and implementation costs compared to WMS top players



Highly Customizable

to meet specific business requirement



Flexible Deployment Strategies

On-Premise, SaaS based along with different subscription models

Successful Global Deployments

Successfully manages multiple warehouses of one of the leading Japanese car manufacturer in the world



\Orchestrating a brighter world

NEC creates the social values of safety, security, fairness and efficiency to promote a more sustainable world where everyone has the chance to reach their full potential.