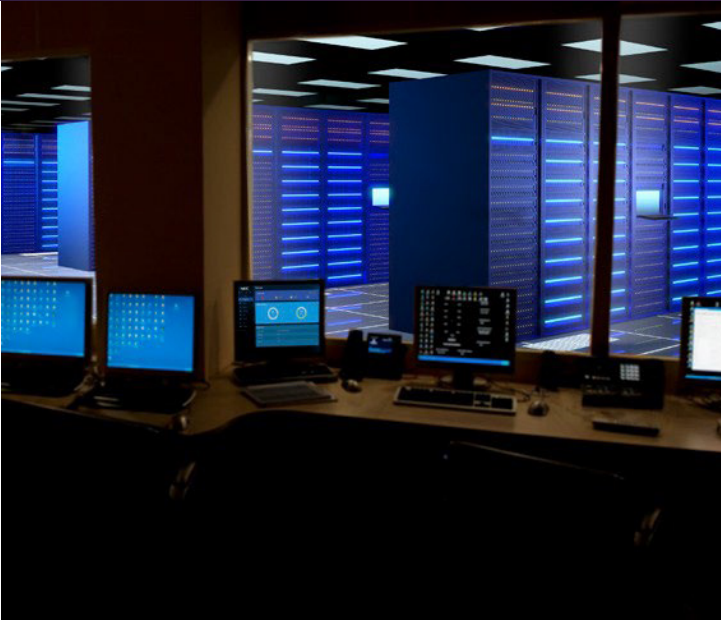


QX-S6700 Family of 100 Gigabit Ethernet Switches



At a Glance

- Versatile 48 ports of 10 Gbps (either copper or SFP+) with 6 ports of 100 Gbps uplinks L3 aggregation switches that can be utilized in both traditional and SDN network environments
- Supports NEC's Network Operation Engine that provides network automation and virtualization managed through an easy-to-use management interface. It simplifies day to day network management with drag-and-drop network configuration and high-availability resulting in a secure, flexible, and centrally configurable Enterprise Campus Network.
- Can be managed by the Network Operation Engine Controller, management console or Command Line Interface (CLI)

Overview

Main Product Features

- 48 x 10 Gbps Ethernet ports (1/10 G BaseT for QX-S6748XT-6H or SFP+ for QX-S6748XP-6H)
- 6 x 100 Gbps Ethernet Ports (QSFP28)
- Support for both Store & Forward and Cut-Through forwarding modes
- Support for L2 and L3 forwarding, QoS, Security, Multicast, & VLAN
- Support for EVPN(VXLAN)
- Support static, policy-based and RIP/OSPF/BGP Routing functions
- CLI and WebGUI management console
- SDN compatible (Network Operation Engine)
- High Speed stack connection function (Intelligent Resilient Framework)
- The switch requires:
 - ◇ Power modules: PSR450-12A1-N (2 slots available, one or two power modules can be installed) - The QX-S7532HP switches each come with one power module slot empty, and one installed with a filler panel. The power modules must be ordered separately
 - ◇ Fan trays: LSWM5FANSA or LSWM5FANSB (5 slots available, all 5 fans are required) - Must be ordered separately

Specifications

Features		QX-S6748XP-6H	QX-S6748XT-6H
Performance	Switching capacity [bps]	2160.0G	
	Transfer rate [pps]	1001.7M	
	Switching method	S&F/CT	
	MAC address table	32K min/288K max(default 96K)	
	Routing table (IPv4/IPv6)	IPv4: 32k min/324k max (default 32K) IPv6: 16k min/162k max (default 16K)	
	ARP table	16K min/272K max	
Interface	1/10G BaseT	-	48
	SFP+(10G)	48	-
	QSFP28(100G) slot	6	6
	Console port/Management port	√ / √	√ / √
IRF Stack	IRF stack max. size	10	
	MAD/ISSU	√ / √	
	Stackable port	QSFP+/QSFP28	
VLAN	IEEE802.1Q	√	
	VLAN type	PORT/PROT/IPSub	
	PrivateVlan	√	
	Voice VLAN	√	
	Maximum number of VLANs	4094[2048]	
	VLAN mapping	√	
	QinQ	√	
Port function	Auto Negotiation/Speed/Full/Half Duplex Fixed	√ / √	
	Auto MDI/MDIX/MDIX fixed	√ / -	
	Flow control (IEEE802.3X)	√	
	EAP Transparent/BPDU Transparent port isolate	√ / √	
	Packet forwarding suppression	√	
	Storm-Constrain	B/M/U	
	Jumbo frame (byte)	9416	
	Loop detection (supports multi-port loops)	√	
	Unidirectional link detection (DLDP)	√	
	Ethernet OAM (IEEE802.3ah)	√	
	CFD (IEEE802.1ag)	√	
	Link aggregation (LACP compatible)	√	
	Spanning tree	S/R/M/P	
Ring protocol (RRPP)	√		
Packet filter (ACL)	√		
IPv6 management	√		
QoS	SPQ/WRR/WFQ/WRED	√ / √ / √ / √	
	Bandwidth management	LR/CAR/GTS	
	Trust/Marking	√ / √	
	Number of QoS classes	8	

√ = Available
- = Not Available

Specifications (cont.)

Features		QX-S6748XP-6H	QX-S6748XT-6H
Security	Supported authentication methods		LOC
	Static/PBR		√ / √
Routing	RIP		v1/v2/ng
	OSPF		v2/v3
	BGP		4/4+
	VRRP		√
	BFD		√
	VRF-Lite(MCE)		√
Multicast	Multicast VLAN		√
	IGMPv1/v2/v3 Snooping		√
	MLDv1/v2 snooping		√
	IGMPv1/v2/v3		√
	MLDv1/v2		√
	PIM-SM/PIM-SSM		√
Tunnel			G/44/46/64/66
EVPN(VXLAN)			√
Management	telnet/ssh/WEB console		√ / √ / -
	ftp/tftp client/ftp server		√ / √
	LLDP		√
	DHCP		C/R/SV/SN
	NTP client/NTP server		√ / √
	Syslog		√
	Log file		√
	SNMPv1/v2c/v3		√
	Standard MIBs, Private MIBs		√
	RMON		√
	sFlow		√
	Port mirroring		√
	Echo	EEE(IEEE802.3az)	√
schedule task			√
Physical specification	External dimension (W x D x H) [inch/mm]	17.3 x 15.7 x 1.73 440 x 400 x 44.0	17.3 x 15.7 x 1.73 440 x 400 x 44.0
	Weight	22 lb 10.0 kg	22 lb 10.0 kg
	AC power input [50/60Hz] (rated/maximum)		100~240V(90~290V)
	Maximum power consumption	213W(AC)	229W(AC)
	Redundant power supply		√ (1U Power Redundancy)
	Operating temperature/humidity (non-condensing)		0~45°C/10~90%

√ = Available
- = Not Available

QX-S6748XP-6



QX-S6748XT-6H



Corporate Headquarters (Japan)
NEC Corporation
nec.com

North America (USA & Canada)
NEC Corporation of America
necam.com

EMEA (Europe, Middle East, Africa)
NEC Enterprise Solutions
nec-enterprise.com

APAC
NEC Asia Pacific Pte Ltd
sg.nec.com

Latin America
NEC Latin America
latam.necam.com

About NEC Corporation of America: Headquartered in Irving, Texas, NEC Corporation of America is a leading technology integrator providing solutions that improve the way people work and communicate. NEC delivers integrated Solutions for Society that are aligned with our customers' priorities to create new value for people, businesses and society, with a special focus on safety, security and efficiency. We deliver one of the industry's strongest and most innovative portfolios of communications, analytics, security, biometrics and technology solutions that unleash customers' productivity potential. Through these solutions, NEC combines its best-in-class solutions and technology, and leverages a robust partner ecosystem to solve today's most complex business problems. NEC Corporation of America is a wholly-owned subsidiary of NEC Corporation, a global technology leader with a presence in 160 countries and \$25.2 billion in revenues. For more information, visit necam.com.