

# Real-Time Identity for Base Entry & Exit

# SMART ID EXPRESS™

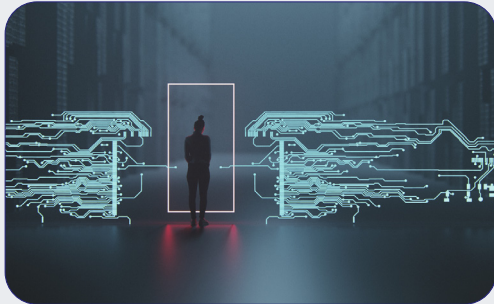
## COMMAND PRIORITIES

### MISSION

Protect personnel, assets, and operations across the installation.

**MISSION = SAFETY + SECURITY + EFFICIENCY**

Control access while maintaining operational flow and readiness.



## HOW SMART ID EXPRESS DELIVERS

### SAFETY

- Immediate identification of individuals entering and exiting the base
- Real-time alerts on unauthorized or flagged persons
- Continuous visibility across access points and controlled zones

### SECURITY

- Biometric identity verification validate ID checks
- Persistent tracking across entry, exit, and interior zones
- Reduces reliance on credentials that can be lost, shared, or forged

### EFFICIENCY

- No stopping, Automated scanning, No bottlenecks
- High-throughput processing of personnel and visitors in motion
- Reduced guard workload – focus on response, not processing

## COMMAND IMPACT



**Stronger Force Protection**



**Faster Throughput at Access Points**



**Improved Situational Awareness**



**Operational Readiness at Scale**

## WHAT SMART ID EXPRESS ENABLES



### Effective Base Access

Personnel and authorized visitors are identified in motion—no delays at the gate.



### Controlled Zone Security

Continuous authentication across restricted areas.



### Exit Accountability

Track and confirm departures for full entry–exit visibility.



### Surge & Elevated Threat Conditions

Scale operations immediately without adding infrastructure or personnel.

## HOW IT WORKS



### Detect

Individuals captured in motion

### Identify

Real-time biometric matching

### Track

Continuous monitoring across zones

### Alert

Immediate notification of anomalies or threats

### Act

Rapid response with actionable intelligence

## KEY ADVANTAGES FOR BASE OPERATIONS



Proven to operate effectively in crowds, motion, and real-world conditions



Identifies individuals even with partial visibility



Processes large volumes simultaneously in real time



Deploys quickly with a minimal hardware footprint



Integrates with existing access control and security systems

## THE RESULT

Secure the Mission.  
Streamline the Operation.  
Enhance Control.



## NEC MISSION ACCESS



**32%** Increase in  
Credential Validation Accuracy



**36%**  
Decrease in Wait Times

Modernize Base  
Access with Smart ID  
Express™

Schedule a demonstration or  
evaluate deployment for your  
installation



Visit [Necns.com](https://www.necns.com) for more information

Corporate Headquarters (Japan)  
NEC Corporation  
[www.nec.com](https://www.nec.com)

North America (USA & Canada)  
NEC Corporation of America  
[www.necam.com](https://www.necam.com)

NEC Software Solutions  
NEC EMEA Region  
[www.necsws.com](https://www.necsws.com)

APAC  
NEC Asia Pacific Pte Ltd  
[sg.nec.com](https://sg.nec.com)

Latin America  
NEC Latin America  
[latam.necam.com](https://latam.necam.com)

**About NEC Corporation Of America:** NEC Corporation of America (NEC) is a leader in the integration of IT and network technology that benefit business and people around the world. By utilizing the company's experience and global resources, NEC's advanced technologies meet the complex and ever-changing needs of its customers. NEC brings over 120 years of expertise in technological innovation to empower people, organizations and society. NEC Corporation of America is a wholly-owned subsidiary of NEC Corporation, a global technology leader with a presence in 160 countries and \$25.2 billion in revenues. [www.necam.com](https://www.necam.com).